

# PRE-INSULATED SPADE TERMINALS | Ident & Terminals

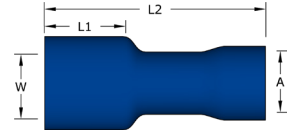
## PRE-INSULATED CRIMP TERMINALS



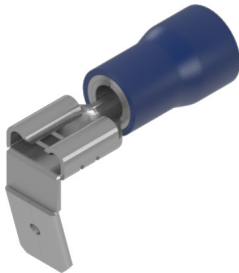
### Fully Insulated Female Spade Terminals

Fully insulated female spade terminals.

**Temperature Range:** -10°C to 75°C  
**Material:** Tin Plated Copper / Vinyl Insulation  
**Voltage:** 300V  
**Colour:** Red, Blue, Yellow



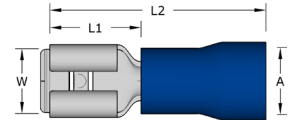
Code	Colour	Range mm <sup>2</sup>	Tab	ID (A)	Length (L1)	Length (L2)	Width (W)	Pack QTY
RFS28FI-5	Red - 19A Max	0.5-1.5	0.5 x 2.8	1.7	10.5	19.0	3.2	100
RFS28FI-8		0.5-1.5	0.8 x 2.8	1.7	10.5	19.0	3.2	100
RFS48FI-5		0.5-1.5	0.5 x 4.8	1.7	10.5	19.0	5.0	100
RFS48FI-8		0.5-1.5	0.8 x 4.8	1.7	10.5	19.0	5.0	100
RFS63FI	Blue - 27A Max	0.5-1.5	0.8 x 6.4	1.7	10.5	21.8	6.6	100
BFS48FI-5		1.5-2.5	0.5 x 4.8	2.3	10.5	19.0	5.0	100
BFS48FI-8		1.5-2.5	0.8 x 4.8	2.3	10.5	19.0	5.0	100
BFS63FI		1.5-2.5	0.8 x 6.4	2.3	10.5	22.8	6.6	100
YFS63FI	Yellow - 48A Max	4.0-6.0	0.8 x 6.4	3.4	10.9	23.8	6.6	100
YFS95FI		4.0-6.0	1.2 x 9.4	3.4	10.9	30.0	10.0	100



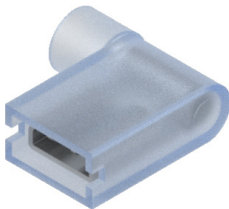
### Pre-Insulated Piggy Back Spade Terminals

Pre-insulated piggy back spade terminals.

**Temperature Range:** -10°C to 75°C  
**Material:** Tin Plated Copper / Vinyl Insulation  
**Voltage:** 300V  
**Colour:** Red, Blue, Yellow



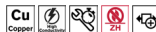
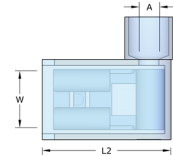
Code	Colour	Range mm <sup>2</sup>	Tab	ID (A)	Length (L1)	Length (L2)	Width (W)	Pack QTY
RPB63	Red - 19A Max	0.5-1.5	0.8 x 6.4	1.7	12.0	21.0	6.7	100
BPB63	Blue - 27A Max	1.5-2.5	0.8 x 6.4	2.3	12.0	21.0	6.7	100
YPB63	Yellow - 48A Max	4.0-6.0	0.8 x 6.4	3.4	11.0	24.5	6.7	100



### Fully Insulated Female Flag Spade Terminals

Fully insulated female flag spade terminals.

**Temperature Range:** -40°C to 105°C  
**Material:** Tin Plated Copper / Nylon Insulation  
**Voltage:** 300V  
**Colour:** Red, Blue



Code	Colour	Range mm <sup>2</sup>	ID (A)	Length (L2)	Width (W)	Pack QTY
RFLAG63	Red - 19A Max	0.5-1.5	1.7	16.0	6.6	100
BFLAG63	Blue - 27A Max	1.5-2.5	2.3	16.0	6.6	100