

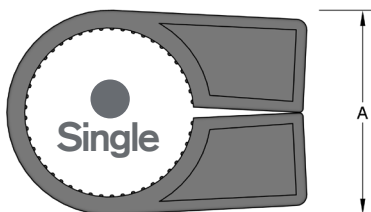
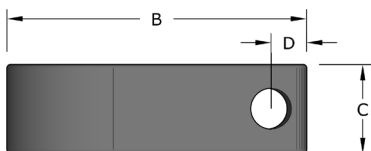
## CABLE CLEATS

# Clingstrap

## One-Part Single-Fixing

### Standard Polypropylene LSZH Polypropylene

The Clingstrap Cable Cleat is a comprehensive range of single fixing cable cleats to provide a simple, but strong means of securing cables. Suitable for use with cables or pipes up to 5.0 - 50.8mm in diameter.



### Clingstrap Cleats

- Fastening/fitting/routing single and multiple conductor low and medium voltage cables
- Excellent weathering and high resistance to ultraviolet light
- Excellent stiffness
- Fully recyclable

**Standards:** European Standard IEC 61914:2021

**Temperature Range:** -40°C to 40°C

**Material:** Polypropylene / LSZH Polypropylene



Standard Code	Low Smoke Code	Cable Range		Stud Hole Size	Dimensions				Pack QTY	Box QTY
		Min	Max		(A)	(B)	(C)	(D)		
C3	C3LS	5.0	7.6	M6	12.0	25.0	15.0	6.0	100	5,000
C4	C4LS	7.7	10.0	M6	14.0	27.0	15.0	7.0	100	5,000
C5	C5LS	10.1	12.7	M6	16.0	29.0	15.0	8.0	100	4,500
C6	C6LS	12.6	15.2	M6	19.0	32.0	15.0	8.0	100	3,500
C7	C7LS	15.1	17.8	M6	23.0	36.0	16.0	8.0	100	2,500
C8	C8LS	17.7	20.3	M6	24.0	38.0	19.0	8.0	100	1,800
C9	C9LS	20.2	22.8	M6	27.0	42.0	19.0	8.0	100	1,400
C10	C10LS	22.7	25.4	M6	31.0	45.0	19.0	8.0	100	1,200
C11	C11LS	25.3	27.7	M10	33.0	50.0	22.0	9.0	100	800
C12	C12LS	27.6	30.5	M10	38.0	58.0	24.0	11.0	50	500
C14	C14LS	30.4	35.5	M10	44.0	64.0	25.0	11.0	50	500
C16	C16LS	35.4	40.6	M10	49.0	70.0	25.0	11.0	50	350
C18	C18LS	40.5	45.7	M10	53.0	74.0	25.0	11.0	50	300
C20	C20LS	45.6	50.8	M10	57.0	80.0	26.0	11.0	50	300