

# Copper Tube Lugs | LONG PALM / RIGHT ANGLE TERMINALS

## LONG PALM TERMINALS

# Long Palm



### Copper Long Palm Lugs 600/1000V

Long Palm Lugs are used for terminating onto busbar systems or extended take off palms on contactors, MCBs, ACBs or where more than one stud fixing is required.

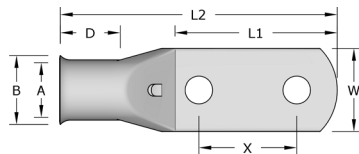
Remora Long Palm Lugs are manufactured from precision drawn seamless copper tube to BS EN 12449:1999. All standard types in the range between 10mm<sup>2</sup> and 240mm<sup>2</sup> have bell mouth entries to ensure ease of entry, even with flexible conductors. All Copper Tube Lugs are tin plated to BS 1872 Part 2 for corrosion resistance and suitable for use up to 200°C.

Nickel plated lugs are available for high temperature applications up to 343°C.

**Temperature Range:** up to 200°C

**Material:** BS EN 12449:1999

**Plating:** Tin BS 1872 Part 2



Blank		Palm									
Code	Code	Cable Size mm <sup>2</sup>	Stud Size	(A)	(B)	(W)	(X)	(D)	(L1)	(L2)	Thickness
10-6LP	10-LP	10	6	4.4	6.9	11.0	16.0	10.0	34.0	50.0	2.0
16-6LP	16-LP	16	6	5.6	8.0	11.4	16.0	11.0	34.0	52.0	2.2
25-6LP	25-LP	25	6	7.0	9.5	13.5	16.0	13.0	34.0	57.0	2.4
35-6LP	35-LP	35	6	8.2	11.0	15.5	16.0	18.0	34.0	56.0	2.8
50-6LP	50-LP	50	6	9.5	12.0	17.2	16.0	18.0	34.0	61.0	2.4
70-12LP	70-LP	70	13.0	11.5	15.0	21.2	45.0	18.0	75.0	105.0	2.0
95-12LP	95-LP	95	13.0	13.5	17.0	24.3	45.0	24.0	75.0	111.0	3.5
120-12LP	120-LP	120	13.0	15.0	19.0	27.2	45.0	27.0	75.0	115.0	4.0
150-12LP	150-LP	150	13.0	16.5	21.0	30.0	45.0	27.0	75.0	120.0	4.5
185-12LP	185-LP	185	13.0	18.5	23.0	33.5	45.0	30.0	75.0	125.0	4.5
240-12LP	240-LP	240	13.0	21.0	26.0	37.7	45.0	32.0	75.0	128.0	5.0
300-12LP	300-LP	300	13.0	23.0	28.0	41.0	45.0	37.0	75.0	137.0	5.0
400-12LP	400-LP	400	13.0	27.0	32.0	47.3	45.0	38.0	75.0	138.0	5.0
500-12LP	500-LP	500	13.0	30.0	38.0	55.0	45.0	50.0	75.0	160.0	8.2
630-12LP	630-LP	630	13.0	33.8	44.0	63.0	45.0	50.0	75.0	164.0	10.2
800-12LP	800-LP	800	13.0	38.0	49.0	70.0	45.0	56.0	75.0	171.0	11.0



**Tooling**