

Cable Cleats | METALLIC SINGLE / TREFOIL

STAINLESS STEEL CABLE CLEATS

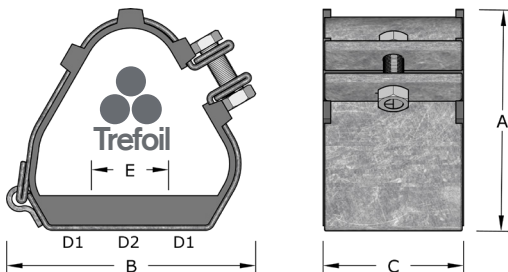
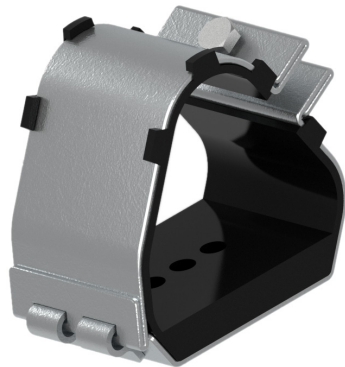
Emperor

Single or Dual-Fixing

The Emperor range offers the ultimate protection against the harshest conditions, and its unique design means it can be quickly installed. Manufactured in Type 316L Stainless Steel, Emperor cleats are available in multiple sizes with range-taking capability, to suit trefoil or single cables.

To protect and cushion the cables during short circuit conditions, the cleat is supplied with an integral Low Smoke and Fume Polymeric liner and base pad.

We recommend that the Emperor is fixed using either two M10 bolts, or a single M12 bolt. Alternative bolt recommendations on request.



316L Stainless Steel Trefoil Cleat

- Superior tensile strength
- Excellent weathering and corrosion resistance
- Excellent stiffness

Standards: European Standard IEC 61914:2021
ABS DNV Type Approved, UL Listed

Max Short-Circuit: 149kA 600mm Spacing
195kA 300mm Spacing

Temperature Range: -40°C to 60°C

Material: 316L Stainless Steel / Polymeric Liner/Base Pad



Code	Trefoil Cable Range		Dimensions				D1 + D2	
	Min	Max	(A)	(B)	(C)	(E)	Fixing Holes	Weight (g)
ER19-23	19.0	23.0	83.0	96.0	54.0	25.0	2xM10 + 1xM12	485
ER23-28	23.0	28.0	83.0	96.0	54.0	25.0	2xM10 + 1xM12	425
ER27-32	27.0	32.0	88.0	97.0	54.0	25.0	2xM10 + 1xM12	440
ER30-35	30.0	35.0	91.0	99.0	54.0	25.0	2xM10 + 1xM12	445
ER33-38	33.0	38.0	95.0	103.0	54.0	25.0	2xM10 + 1xM12	460
ER36-42	36.0	42.0	100.0	124.0	54.0	50.0	2xM10 + 1xM12	600
ER40-46	40.0	46.0	106.0	125.0	54.0	50.0	2xM10 + 1xM12	605
ER44-50	44.0	50.0	117.0	130.0	54.0	50.0	2xM10 + 1xM12	630
ER48-55	48.0	55.0	121.0	132.0	54.0	50.0	2xM10 + 1xM12	640
ER51-58	51.0	58.0	128.0	136.0	54.0	50.0	2xM10 + 1xM12	650
ER55-62	55.0	62.0	135.0	160.0	54.0	75.0	2xM10 + 1xM12	810
ER59-66	59.0	66.0	143.0	163.0	54.0	75.0	2xM10 + 1xM12	825
ER63-70	63.0	70.0	151.0	166.0	54.0	75.0	2xM10 + 1xM12	850
ER67-74	67.0	74.0	158.0	169.0	54.0	75.0	2xM10 + 1xM12	850
ER71-78	71.0	78.0	165.0	172.0	54.0	75.0	2xM10 + 1xM12	890
ER74-82	74.0	82.0	171.0	177.0	54.0	75.0	2xM10 + 1xM12	890
ER77-85	77.0	85.0	177.0	183.0	54.0	75.0	2xM10 + 1xM12	905
ER82-88	82.0	88.0	187.0	191.0	54.0	75.0	2xM10 + 1xM12	820
ER88-96	88.0	96.0	203.0	207.0	54.0	75.0	2xM10 + 1xM12	890
ER96-103	96.0	103.0	218.0	221.0	54.0	75.0	2xM10 + 1xM12	940
ER103-111	103.0	111.0	235.0	237.0	54.0	75.0	2xM10 + 1xM12	950
ER111-119	111.0	119.0	250.0	253.0	54.0	75.0	2xM10 + 1xM12	1010
ER119-128	119.0	128.0	275.0	265.0	54.0	75.0	2xM10 + 1xM12	1220

All dimensions in mm except where stated