

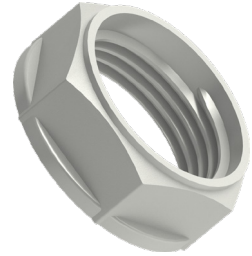
### Nylon Locknuts

Remora Metric nylon locknuts. Use this code if you wish to order locknuts separately from glands.

**Temperature Range:** -40°C to 100°C (static)

**Material:** PA6 (Nylon)

**Colour:** Black, Grey, Red, White (PG locknuts & M40-M63 Black and Grey Only)



Metric

Metric Code	Entry Thread	A/F	A/C	Thickness	Pack QTY
NLN12*	M12 x 1.5	20.0	22.0	5.0	100
NLN16*	M16 x 1.5	20.0	22.0	7.0	100
NLN20*	M20 x 1.5	22.0	26.5	7.0	100
NLN25*	M25 x 1.5	28.0	32.0	8.0	100
NLN32*	M32 x 1.5	38.0	42.0	8.0	100
NLN40*	M40 x 1.5	50.0	55.0	8.0	50
NLN50*	M50 x 1.5	60.0	66.0	9.0	25
NLN63*	M63 x 1.5	75.0	82.0	10.0	10

NLN 20 B

Prefix

Size

Colour:

B = Black  
G = Grey  
R = Red  
W = White



PG

### PG

PG Code	Entry Thread	A/F	A/C	Thickness	Pack QTY
NLNPG7*	PG7	15.0	17.0	5.0	100
NLNPG9*	PG9	22.0	24.0	5.0	100
NLNPG11*	PG11	24.0	26.0	5.0	100
NLNPG13.5*	PG13.5	28.0	30.0	6.0	100
NLNPG16*	PG16	30.0	32.5	6.0	100
NLNPG21*	PG21	36.0	39.0	7.0	50
NLNPG29*	PG29	47.0	50.0	7.5	50
NLNPG36*	PG36	60.0	65.0	8.0	25
NLNPG42*	PG42	64.0	71.0	10.0	25
NLNPG48*	PG48	70.0	76.0	10.0	10



Call the Remora sales team at **01226 352 000**

Challenge us - We find a solution