

# Industrial 17

## One-Part Single-Fixing

**Standard Black LLDPE**  
**Black Polymeric LUL (LSZH)**

Industrial 17 Cable Cleats are a comprehensive range of single fixing cable cleats to fix power cables in indoor and outdoor applications. Suitable for cable diameters 10mm to 51mm in eight sizes.

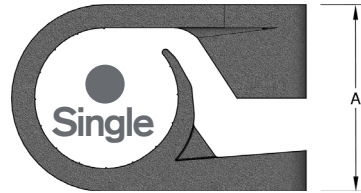
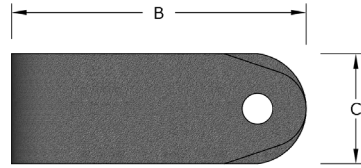


### Industrial 17 Cleats

- Fastening/fitting/routing single and multiple conductor low and medium voltage cables
- Increased cable range per size for reduced stock holding
- Available in standard and LUL approved material
- Excellent weathering and high resistance to ultraviolet light

**Temperature Range:** -40°C to 40°C

**Material:** Black LLDPE / LUL (LSZH)



Standard Code	LUL Zero Halogen Code	Cable Range		Stud Hole Size	Dimensions			Pack QTY
		Min	Max		(A)	(B)	(C)	
17-01B	17-01LUL	10.0	15.0	M4	17.6	27.8	12.0	100
17-02B	17-02LUL	12.0	17.0	M4	20.8	32.0	14.0	100
17-03B	17-03LUL	15.0	20.0	M4	25.3	37.1	16.0	100
17-04B	17-04LUL	18.0	24.0	M4	29.6	41.0	18.0	100
17-05B	17-05LUL	22.0	29.0	M6	35.4	52.1	20.0	50
17-06B	17-06LUL	26.0	34.0	M6	40.9	58.2	22.0	50
17-07B	17-07LUL	32.0	42.0	M6	49.2	69.3	25.0	25
17-08B	17-08LUL	39.0	51.0	M6	58.5	81.7	26.0	25

• The LUL version of this clamp is compliant with the requirement of London Underground Standard 1-085