

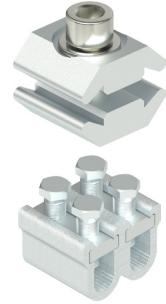
Branch Mechanical Connectors

Branch Mechanical Connectors for use with RCB Resin Joints.
For use with cables up to 95mm².

Material: Aluminium Alloy



Code	Length	Width	Height	Cable Range mm ²
P1	23.0	20.0	25.0	< 35.0
WM1	40.0	41.0	34.0	16.0 - 95.0



Two-Part Jointing Resin

Easy-pour Polyurethane resin is specially designed for cable joints up to 1kV. It has good anti corrosion properties and shows excellent adhesion to metals, ceramics, and many different plastics.

Material: Hydrolysis resistant polyurethane resin

Voltage: 1kV (1000v)

Standards: IEC 60455-3-8:2013



Code	Content ml	Colour
PR360	360	Black
PR800	800	Black
PR1800	1800	Black

