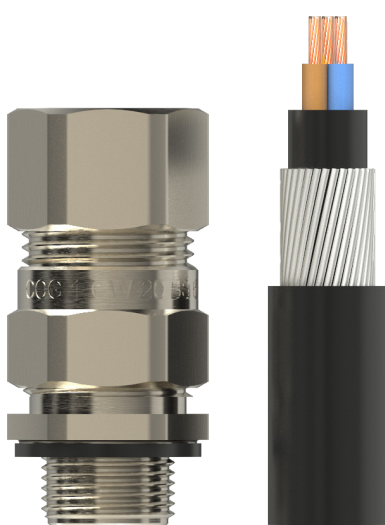


Cable Glands | INDUSTRIAL CCG® CABLE GLANDS

INDOOR/OUTDOOR - STEEL WIRE ARMOUR



CCG CW Cable Gland

The CW Gland is designed for use with Steel Wire Armoured cables for general indoor/outdoor use where a seal on the outer sheath is required to obtain an IP rating. The gland features two-piece handling, no loose parts & freely rotating captive cone providing an armour clamp and earth bond without twisting the armouring. Seals on the cable sheath to IP66 if fitted with a sealing washer.

- For indoor and outdoor use.
- Two-part handling, no loose parts.
- Freely rotating captive cone, providing an armour clamp and earth bond without twisting the armouring.
- Patented disconnect armour clamp system for ease of inspection.
- Supplied complete with IP sealing washer.

Design Standards: BS 6121 Part 1 IEC/BS EN 62444
SANS 62444 SANS 1213

Protection: IP66 (Parallel) IEC 60529
Marine: ABS IEC 60529, IEC 62444
DNV IEC 60529, BS 6121, IEC 62444

London Underground Approval: BS EN 62444



EMC Compatible: EN 55011, + A1, EN55022

Temperature Range: -65°C to 120°C

Material (Gland): Brass (Nickel Plated) BS 2874 / EN 12164

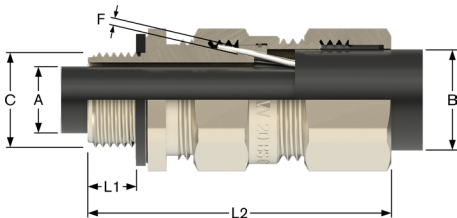
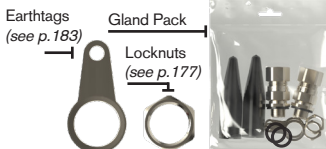
Material (Seal): Thermoset Elastomer



Code	Kit Code	LS Kit Code	Reference Size	Bedding OD (A) Max	Cable OD (B)		Gland Length (L2)	Armour Dia (F)		Thread Entry (C)	Length (L1)	A/F	A/C
					Min	Max		Min	Max				
051216	GPCW16	GPCW16LS	00 - 16ss	8.5	8.0	13.5	51.0	0.90	0.90	M16 x 1.5	10.0	24.0	27.0
051200	GPCW00	GPCW00LS	00 - 20ss	8.5	8.0	13.5	51.0	0.90	0.90	M20 x 1.5	10.0	24.0	27.0
0512-0	GPCW0	GPCW0LS	0 - 20s	12.0	11.5	16.0	53.0	0.90	1.25	M20 x 1.5	10.0	24.0	27.0
051201	GPCW1	GPCW1LS	1 - 20	15.0	14.5	20.5	57.0	0.90	1.25	M20 x 1.5	10.0	27.0	30.0
051202	GPCW2	GPCW2LS	2 - 25	20.0	20.5	26.5	66.0	1.25	1.60	M25 x 1.5	10.0	35.0	39.0
051203	GPCW3	GPCW3LS	3 - 32	26.5	26.5	33.5	67.0	1.60	2.00	M32 x 1.5	10.0	42.0	47.0
051204	GPCW4	GPCW4LS	4 - 40	34.0	33.0	42.5	83.0	1.60	2.00	M40 x 1.5	15.0	52.0	59.0
051205	GPCW5	GPCW5LS	5 - 50	44.5	42.5	52.5	87.0	2.00	2.50	M50 x 1.5	15.0	65.0	73.0
051206	GPCW6	GPCW6LS	6 - 63	56.5	52.5	65.5	104.0	2.00	2.50	M63 x 1.5	15.0	80.0	90.0
051207	GPCW7	GPCW7LS	7 - 75	67.5	65.5	78.0	112.0	2.50	3.15	M75 x 1.5	15.0	96.0	108.0
051208	GPCW8	GPCW8LS	8 - 80	74.0	78.0	82.0	118.0	2.50	3.15	M80 x 2.0	20.0	96.0	108.0
051209	GPCW9	GPCW9LS	9 - 90	81.5	82.0	91.0	143.0	3.00	3.50	M90 x 2.0	20.0		
051210	GPCW10	GPCW10LS	10 - 100	91.0	90.0	100.0	144.0	3.00	3.50	M100 x 2.0	20.0		

Kits and Accessories

Kits supplied with;
2 glands, 2 locknuts, 2 earhtags, 2 PVC or LS shrouds (M16-M32)
1 gland, 1 locknut, 1 earhtag, 1 PVC or LS shrouds (M40-M100)



All dimensions in mm except where stated