

COPPER EARTH TAPE & BAR | Earthing & Lightning

COPPER EARTH TAPE ACCESSORIES

Tape Junction Square

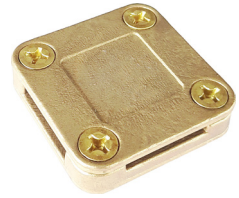
These four-way connectors are suitable for making cross, straight through or tee joints in flat tape. The base has a countersunk hole in the middle for securing the clamp to the building surface and the lid is fixed by means of four screws.

Material: Gunmetal

Standards: IEC/BS EN 62561-1 Class H



Code	Width	Thickness	Pack QTY
CTSQ2503	25.0	3.0	10
CTSQ2506	25.0	6.0	10
CTSQ5006	50.0	6.0	5



Tape Test Junction Clamp

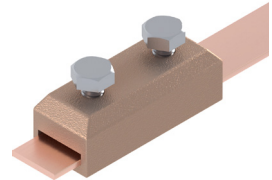
Designed to join a range of tape sizes in a straight through position. In many applications the clamp enables tapes to be overlapped and secured by the two set screws. The clamped connection is easily made/remade to allow for periodic testing. 15Nm Tightening torque.

Material: Gunmetal

Standards: IEC/BS EN 62561-4



Code	Width	Thickness
CTTC2503	26.0	8.0



Not Suitable for PVC covered tape

Non-Metallic Tape Clips

High grade Polypropylene, UV stabilized against degradation by sunlight and non-brittle to prevent cold weather damage. Available in five colours to match bare and PVC covered copper tape.

Material: Polypropylene

Standards: IEC/BS EN 62561-4



Code	Type	Colour	Bare Copper Conductor			Pack QTY
			Width	Thickness		
CTPC2003	Bare Tape	Brown	20.0	3.0		50
CTPC2503	Bare Tape	Brown	25.0	3.0		50
CTPC5006	Bare Tape	Brown	50.0	6.0		50
CTPCC2503-Colour	Covered Tape	Optional	25.0	3.0		50



Metallic Tape Clips

High quality copper alloys manufacture these metallic tape clips designed to secure flat bare and PVC covered copper tape.

Material: High Quality Copper Alloys

Standards: IEC/BS EN 62561-4



Code	Type	Bare Copper Conductor			Pack QTY
		Width	Thickness		
CTC2503	Bare Tape	25.0	3.0		10
CTC2506	Bare Tape	25.0	6.0		10
CTC5006	Bare Tape	50.0	6.0		10
CTCC2503	Covered Tape	25.0	3.0		10
CTCC2506	Covered Tape	25.0	6.0		10
CTCC5006	Covered Tape	50.0	6.0		10

