

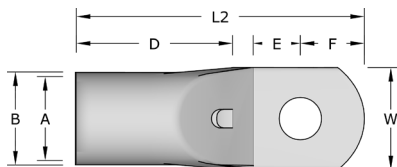


# Narrow Palm

### Copper Narrow Palm Lugs 600/1000V

The Narrow Palm lug is generally used when terminating cables into low voltage moulded case circuit breakers where limited width terminal blocks causes problems for standard lug terminals. The compressed palm of the narrow palm lug provides an effective and efficient termination.

Remora Narrow Palm Lugs are manufactured from precision drawn seamless copper tube to BS EN 12449:1999. All standard types in the range between 35mm<sup>2</sup> and 300mm<sup>2</sup> have straight entries. All Copper Tube Lugs are tin plated to BS 1872 Part 2 for corrosion resistance and suitable for use up to 200°C. Nickel plated lugs are available for high temperature applications up to 343°C.



**Temperature Range:** up to 200°C

**Material:** BS EN 12449:1999

**Plating:** Tin BS 1872 Part 2



Code	Cable Size mm <sup>2</sup>	Stud Size	(A)	(B)	(W)	(E)	(F)	(D)	(L2)	Palm Thickness
35-6NP	35	6	8.0	8.4	11.6	7.5	7.0	16.0	37.2	2.9
50-6NP	50	6	9.5	10.4	11.5	8.0	7.0	18.0	41.5	3.9
50-8NP	50	8	9.5	10.4	11.5	8.0	8.0	18.0	39.0	3.9
70-8NP	70	8	11.0	11.3	13.5	8.0	9.5	20.0	49.0	3.0
70-10NP	70	10	11.0	16.0	13.5	8.0	9.5	21.0	51.0	3.5
95-8NP	95	8	13.5	21.0	16.0	12.0	11.7	23.0	56.0	4.0
95-10NP	95	10	13.5	14.1	17.0	12.0	10.5	21.0	57.1	4.0
120-8NP	120	8	15.0	15.5	19.0	11.8	11.7	23.0	62.8	4.5
120-10NP	120	10	15.0	16.4	19.0	11.8	12.0	23.0	65.0	4.5
150-8NP	150	8	16.5	18.4	18.5	13.5	12.6	25.0	70.0	6.6
150-10NP	150	10	16.5	18.4	18.5	13.5	12.6	25.0	70.0	6.6
185-8NP	185	8	18.5	20.8	24.5	13.0	13.0	30.0	74.0	5.5
185-10NP	185	10	18.5	20.8	24.5	13.0	13.0	30.0	74.0	5.5
185-12NP	185	12	18.5	20.8	24.5	13.0	13.0	30.0	74.0	5.5
240-10NP	240	10	21.0	23.0	31.0	17.0	16.7	33.0	83.0	6.0
240-12NP	240	12	21.0	23.0	31.0	17.0	15.2	30.0	86.0	6.0
300-12NP	300	12	23.0	24.0	34.6	17.5	17.5	36.0	96.7	7.0



Call the Remora sales team at **01226 352 000**

Challenge us - We find a solution