

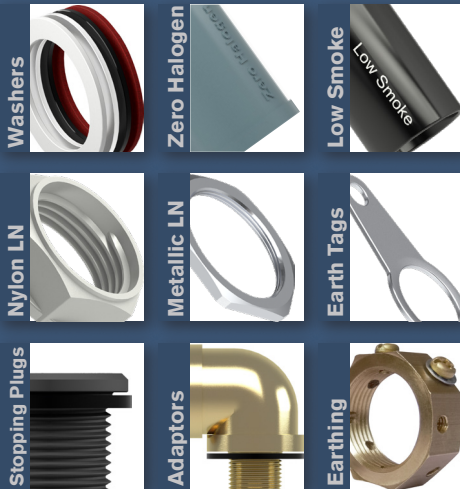
## CABLE GLAND ACCESSORIES

# Accessories

## Accessories

High quality thread conversion and sealing accessories suitable for a wide range of cable gland installations and environments. Ideal for both domestic and large-scale industrial construction projects where the cable gland fits the cable but the connecting thread differs.

Included in the range are locknuts, sealing and locking washers, shrouds and thread adaptors and reducers



### Hazardous Area Accessories



Remora offers a full range of CCG premium Hazardous Area Certified thread converters. Engineered to meet the demands of Hazardous Area electrical equipment installations in the most inhospitable of environments. Internationally recognised certification bodies including ATEX, IECEx, UL and more.

### Industrial Accessories



Also available in standard range of Industrial thread conversion products to meet the demands of common domestic and commercial applications. The standard industrial range in this section is suitable for use in all non-hazardous area installations and can be supplied in nylon or nickel plated brass.

### Low Smoke & Zero Halogen Shrouds



Cable Shrouds are used to limit the build up of dirt and liquids on the body of the cable gland. Remora Low Smoke and LSZH shrouds are manufactured from specially formulated low smoke PVC and Zero Halogen silicone. Commonly specified for projects where protection against toxic fumes is required for people and equipment.

For more information on these and other Remora products, please visit our website at [www.remora.net](http://www.remora.net)



Adaptors P.158 | 161



Reducers P.162 | 165



Dome Stopping Plugs P.166 | 169



Hex Head Stopping Plugs P.170 | 171



Breather Drains P.172 | 173



Bushes & Couplers P.174 | 175



Locknuts P.176 | 179



Sealing Washers P.180 | 181



Earth Tags P.182 | 183



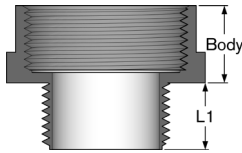
Shrouds P.185 | 187



Ident & Wiring Term  
Copper Lugs  
Heatshrink Repair  
Cable Joining  
Junction Boxes  
Flexible Conduit  
Cable Glands  
Gland Accs.  
Cable Cleats  
Earthing Lightning  
MCC Cable  
Cable Ties & Acc  
Tooling & Cable Prep  
Fixing & Security

# Accessories | INDUSTRIAL AREA ADAPTORS

## NYLON ADAPTORS METRIC & PG



### Metric-Metric Nylon Adaptors

Remora Metric-Metric Nylon Adaptors enable the use of larger cable glands with smaller pre-existing threaded holes in machines, devices and housings.

**Protection:** IP56

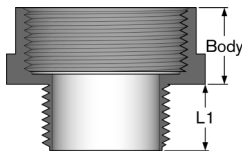
IP66 (if fitted with sealing washer)

**Temperature Range:** -40°C to 100°C (static)

**Material:** PA6 (Nylon) Fibre Reinforced



Code	Male Thread	Female Thread	Male Thread		
			Length (L1)	A/F	Body Height
AM12M16N	M12 x 1.5	M16 x 1.5	9.0	20.0	18.0
AM16M20N	M16 x 1.5	M20 x 1.5	9.0	24.0	18.0
AM20M25N	M20 x 1.5	M25 x 1.5	9.0	29.0	18.0
AM25M32N	M25 x 1.5	M32 x 1.5	10.0	36.0	18.0
AM32M40N	M32 x 1.5	M40 x 1.5	12.0	46.0	18.0
AM40M50N	M40 x 1.5	M50 x 1.5	12.0	55.0	18.0
AM50M63N	M50 x 1.5	M63 x 1.5	14.0	68.0	18.0



### PG-Metric Nylon Adaptors

Remora PG-Metric Nylon Adaptors enable the use of metric cable glands in machines, devices and housings that have a pre-existing PG threaded entry.

**Protection:** IP56

IP66 (if fitted with sealing washer)

**Temperature Range:** -40°C to 100°C (static)

**Material:** PA6 (Nylon) Fibre Reinforced



Code	Male Thread	Female Thread	Male Thread		
			Length (L1)	A/F	Body Height
APG7M16N	PG7 x 1.27	M16 x 1.5	9.0	20.0	18.0
APG9M16N	PG9 x 1.41	M16 x 1.5	9.0	20.0	18.0
APG9M20N	PG9 x 1.41	M20 x 1.5	9.0	24.0	18.0
APG11M16N	PG11 x 1.41	M16 x 1.5	9.0	22.0	18.0
APG11M20N	PG11 x 1.41	M20 x 1.5	9.0	24.0	18.0
APG13M20N	PG13.5 x 1.41	M20 x 1.5	10.0	24.0	18.0
APG13M25N	PG13.5 x 1.41	M25 x 1.5	10.0	29.0	18.0
APG16M25N	PG16 x 1.41	M25 x 1.5	10.0	29.0	18.0
APG21M32N	PG21 x 1.59	M32 x 1.5	12.0	36.0	18.0
APG29M40N	PG29 x 1.59	M40 x 1.5	12.0	46.0	18.0
APG36M50N	PG36 x 1.59	M50 x 1.5	14.0	55.0	18.0
APG42M63N	PG42 x 1.59	M63 x 1.5	14.0	68.0	18.0

### Metric-Metric Industrial Adaptors

- ISO Metric range.
- Application; Machines, Devices, Housings, Panels

**Standards:** EN 50262

**Protection:** IP54

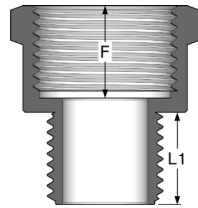
IP66 (if fitted with sealing washer)

**Temperature Range:** -60°C to 200°C

**Material:** Nickel Plated Brass



Code	Entry Thread		Thread Length		
	Male	Female	Male (L1)	Female (F)	A/F
AM12M16S	M12 x 1.5	M16 x 1.5	5.0	13.0	18.0
AM16M20S	M16 x 1.5	M20 x 1.5	13.0	13.0	24.0
AM20M25S	M20 x 1.5	M25 x 1.5	13.0	13.0	29.0
AM25M32S	M25 x 1.5	M32 x 1.5	13.0	13.0	36.0
AM32M40S	M32 x 1.5	M40 x 1.5	13.0	15.0	44.0
AM40M50S	M40 x 1.5	M50 x 1.5	13.0	15.0	54.0
AM50M63S	M50 x 1.5	M63 x 1.5	13.0	15.0	67.0
AM63M75S	M63 x 1.5	M75 x 1.5	13.0	18.0	79.0



### PG-Metric Industrial Adaptors

- PG-ISO Metric range.
- Application; Machines, Devices, Housings, Panels

**Standards:** EN 50262

**Protection:** IP54

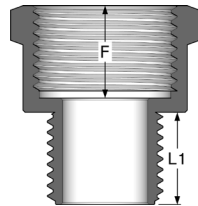
IP66 (if fitted with sealing washer)

**Temperature Range:** -60°C to 200°C

**Material:** Nickel Plated Brass



Code	Entry Thread		Thread Length		
	Male	Female	Male (L1)	Female (F)	A/F
APG9M16S	PG9 x 1.41	M16 x 1.5	13.0	13.0	24.0
APG9M20S	PG9 x 1.41	M20 x 1.5	13.0	13.0	24.0
APG11M16S	PG11 x 1.41	M16 x 1.5	13.0	13.0	24.0
APG11M20S	PG11 x 1.41	M20 x 1.5	13.0	13.0	24.0
APG13M20S	PG13.5 x 1.41	M20 x 1.5	13.0	13.0	24.0
APG13M25S	PG13.5 x 1.41	M25 x 1.5	13.0	13.0	29.0
APG16M25S	PG16 x 1.41	M25 x 1.5	13.0	13.0	29.0
APG21M32S	PG21 x 1.59	M32 x 1.5	13.0	13.0	36.0
APG29M40S	PG29 x 1.59	M40 x 1.5	13.0	15.0	44.0
APG36M50S	PG36 x 1.59	M50 x 1.5	13.0	15.0	54.0
APG42M63S	PG42 x 1.59	M63 x 1.5	13.0	15.0	70.0



Sealing Washers  
Supplied Separately p.180

Call the Remora sales team at **01226 352 000**

Challenge us - We find a solution



### NPT-Metric Hazardous Adaptors

Enlarges housing entry thread.

- NPT - ISO Metric range.

- Application; Hazardous Area, Machines, Devices, Housings, Panels

**Equipment Protection Levels:**

IECEX/INMETRO: Ex db I Mb / Ex eb I Mb / Ex db IIC Gb / Ex eb IIC Gb / Ex ta IIC Da / Ex nR IIC

ATEX: Ⓜ I M2 Ex db I Mb / Ex eb I Mb, Ⓜ II 2G 1D Ex db IIC Gb / Ex eb IIC Gb / Ex ta IIC Da

**Protection:** IP65 / IP66

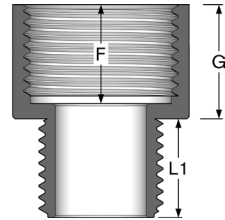
**Temperature Range:** -60°C to 95°C

**Material:** Brass or Nickel Plated Brass (Marine Grade)



Code	Entry Thread		Thread Length				Hex Length	
	Male	Female	Male (L1)	Female (F)	A/F	A/C	Min (G)	
AN050M20E-UN	½" / 0.50 NPT	M20 x 1.5	15.0	15.0	27.0	30.4	21.0	
AN075M25E-UN	¾" / 0.75 NPT	M25 x 1.5	15.0	15.0	32.0	36.0	21.0	

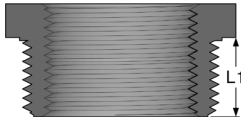
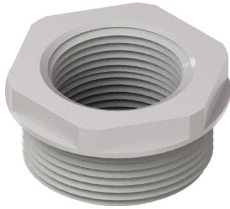
- For Nickel Plated remove -UN when ordering



Ident & Wiring term  
Copper Lugs  
Heatshrink Repair  
Cable Joining  
Junction Boxes  
Flexible Conduit  
Cable Glands  
Gland Accs.  
Cable Cleats  
Earthing Lightning  
MCC Cable  
Cable Ties & Acc  
Tooling & Cable Prep  
Fixing & Security

# Accessories | INDUSTRIAL AREA REDUCERS

## NYLON REDUCERS METRIC & PG



### Metric-Metric Nylon Reducers

Remora Metric-Metric Nylon Reducers enable the use of smaller cable glands with larger pre-existing threaded holes in machines, devices and housings.

**Protection:** IP56

IP66 (if fitted with sealing washer)

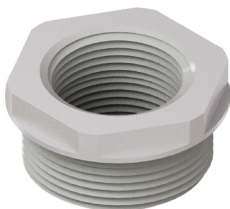
**Temperature Range:** -40°C to 100°C (static)

**Material:** PA6 (Nylon) Fibre Reinforced



#### Male Thread

Code	Male Thread	Female Thread	Length (L1)	A/F
RM16M12N	M16 x 1.5	M12 x 1.5	9.0	22.0
RM20M12N	M20 x 1.5	M12 x 1.5	9.0	24.0
RM20M16N	M20 x 1.5	M16 x 1.5	9.0	24.0
RM25M16N	M25 x 1.5	M16 x 1.5	10.0	29.0
RM25M20N	M25 x 1.5	M20 x 1.5	10.0	29.0
RM32M16N	M32 x 1.5	M16 x 1.5	12.0	36.0
RM32M20N	M32 x 1.5	M20 x 1.5	12.0	36.0
RM32M25N	M32 x 1.5	M25 x 1.5	12.0	36.0
RM40M20N	M40 x 1.5	M20 x 1.5	12.0	46.0
RM40M25N	M40 x 1.5	M25 x 1.5	12.0	46.0
RM40M32N	M40 x 1.5	M32 x 1.5	12.0	46.0
RM50M20N	M50 x 1.5	M20 x 1.5	14.0	55.0
RM50M25N	M50 x 1.5	M25 x 1.5	14.0	55.0
RM50M32N	M50 x 1.5	M32 x 1.5	14.0	55.0
RM50M40N	M50 x 1.5	M40 x 1.5	14.0	55.0
RM63M32N	M63 x 1.5	M32 x 1.5	15.0	65.0
RM63M40N	M63 x 1.5	M40 x 1.5	15.0	65.0
RM63M50N	M63 x 1.5	M50 x 1.5	15.0	65.0



### PG-Metric Nylon Reducers

Remora PG-Metric Nylon Reducers enable the use metric cable glands in machines, devices and housings that have a pre-existing PG threaded entry.

**Protection:** IP56

IP66 (if fitted with sealing washer)

**Temperature Range:** -40°C to 100°C (static)

**Material:** PA6 (Nylon) Fibre Reinforced



#### Male Thread

Code	Male Thread	Female Thread	Length (L1)	A/F
RPG16M20N	PG16 x 1.41	M20 x 1.5	10.0	27.0
RPG21M25N	PG21 x 1.59	M25 x 1.5	12.0	33.0
RPG29M32N	PG29 x 1.59	M32 x 1.5	12.0	42.0
RPG36M40N	PG36 x 1.59	M40 x 1.5	14.0	53.0
RPG42M40N	PG42 x 1.59	M40 x 1.5	14.0	60.0
RPG42M50N	PG42 x 1.59	M50 x 1.5	14.0	60.0
RPG48M50N	PG48 x 1.59	M50 x 1.5	15.0	65.0



### Metric-Metric Industrial Reducers

- ISO Metric range.
- Application; Machines, Devices, Housings, Panels

**Standards:** EN 50262

**Protection:** IP54

IP66 (if fitted with sealing washer)

**Temperature Range:** -60°C to 200°C

**Material:** Nickel Plated Brass



Code	Entry Thread		Thread Length	
	Male	Female	Male (L1)	A/F
RM16M12S	M16 x 1.5	M12 x 1.5	10.0	18.0
RM20M12S	M20 x 1.5	M12 x 1.5	13.0	22.0
RM20M16S	M20 x 1.5	M16 x 1.5	13.0	22.0
RM25M16S	M25 x 1.5	M16 x 1.5	13.0	27.0
RM25M20S	M25 x 1.5	M20 x 1.5	13.0	27.0
RM32M20S	M32 x 1.5	M20 x 1.5	13.0	34.0
RM32M25S	M32 x 1.5	M25 x 1.5	13.0	34.0
RM40M20S	M40 x 1.5	M20 x 1.5	13.0	43.0
RM40M25S	M40 x 1.5	M25 x 1.5	13.0	43.0
RM40M32S	M40 x 1.5	M32 x 1.5	13.0	43.0
RM50M20S	M50 x 1.5	M20 x 1.5	13.0	53.0
RM50M25S	M50 x 1.5	M25 x 1.5	13.0	53.0
RM50M32S	M50 x 1.5	M32 x 1.5	13.0	53.0
RM50M40S	M50 x 1.5	M40 x 1.5	13.0	53.0
RM63M20S	M63 x 1.5	M20 x 1.5	13.0	66.0
RM63M25S	M63 x 1.5	M25 x 1.5	13.0	66.0
RM63M32S	M63 x 1.5	M32 x 1.5	13.0	66.0
RM63M40S	M63 x 1.5	M40 x 1.5	13.0	66.0
RM63M50S	M63 x 1.5	M50 x 1.5	13.0	66.0
RM75M63S	M75 x 1.5	M63 x 1.5	13.0	78.0

### PG-Metric Industrial Reducers

- PG-ISO Metric range.

Code	Entry Thread		Thread Length	
	Male	Female	Male (L1)	A/F
RPG16M20S	PG16 x 1.41	M20 x 1.5	13.0	24.5
RPG21M20S	PG21 x 1.59	M20 x 1.5	13.0	30.3
RPG21M25S	PG21 x 1.59	M25 x 1.5	13.0	30.3
RPG29M20S	PG29 x 1.59	M20 x 1.5	13.0	39.0
RPG29M25S	PG29 x 1.59	M25 x 1.5	13.0	39.0
RPG29M32S	PG29 x 1.59	M32 x 1.5	13.0	39.0
RPG36M25S	PG36 x 1.59	M25 x 1.5	13.0	50.0
RPG36M32S	PG36 x 1.59	M32 x 1.5	13.0	50.0
RPG36M40S	PG36 x 1.59	M40 x 1.5	13.0	50.0
RPG42M32S	PG42 x 1.59	M32 x 1.5	13.0	57.0
RPG42M40S	PG42 x 1.59	M40 x 1.5	13.0	57.0
RPG42M50S	PG42 x 1.59	M50 x 1.5	13.0	57.0
RPG48M32S	PG48 x 1.59	M32 x 1.5	13.0	62.3
RPG48M40S	PG48 x 1.59	M40 x 1.5	13.0	62.3
RPG48M50S	PG48 x 1.59	M50 x 1.5	13.0	62.3



Sealing Washers  
Supplied Separately p.180



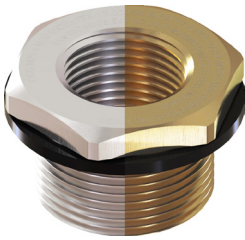
Call the Remora sales team at **01226 352 000**

Challenge us - We find a solution



# Accessories | HAZARDOUS AREA REDUCERS

## HAZARDOUS REDUCERS METRIC & IMPERIAL



### Metric-Metric Hazardous Reducers

Reduces housing entry thread.

• ISO Metric range.

• Application; Hazardous Area, Machines, Devices, Housings, Panels

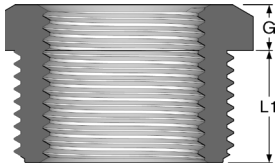
**Equipment Protection Levels:**

IECEX/INMETRO: Ex db I Mb / Ex eb I Mb / Ex db IIC Gb / Ex eb IIC Gb / Ex ta IIC Da / Ex nR IIC ATEX: Ⓢ I M2 Ex db I Mb / Ex eb I Mb, Ⓢ II 2G 1D Ex db IIC Gb / Ex eb IIC Gb / Ex ta IIC Da

**Protection:** IP66 / IP68 (2m cont.)

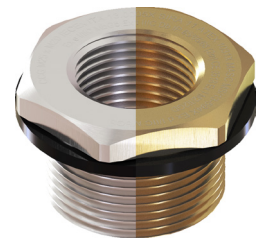
**Temperature Range:** -60°C to 95°C (-60°C to 160°C with High Temp Gasket)

**Material:** Brass or Nickel Plated Brass (Marine Grade)



Code	Entry Thread		Thread Length		Hex Length		
	Male	Female	Male (L1)	Female (F)	A/F	A/C	
RM20M16E-UN	M20 x 1.5	M16 x 1.5	15.0	15.0	27.0	30.4	6.0
RM25M16E-UN	M25 x 1.5	M16 x 1.5	15.0	15.0	32.0	36.0	6.0
RM25M20E-UN	M25 x 1.5	M20 x 1.5	15.0	15.0	32.0	36.0	6.0
RM32M16E-UN	M32 x 1.5	M16 x 1.5	15.0	15.0	38.0	42.8	6.0
RM32M20E-UN	M32 x 1.5	M20 x 1.5	15.0	15.0	38.0	42.8	6.0
RM32M25E-UN	M32 x 1.5	M25 x 1.5	15.0	15.0	38.0	42.8	6.0
RM40M20E-UN	M40 x 1.5	M20 x 1.5	15.0	15.0	47.0	52.9	6.0
RM40M25E-UN	M40 x 1.5	M25 x 1.5	15.0	15.0	47.0	52.9	6.0
RM40M32E-UN	M40 x 1.5	M32 x 1.5	15.0	15.0	47.0	52.9	6.0
RM50M20E-UN	M50 x 1.5	M20 x 1.5	15.0	15.0	55.0	61.9	6.0
RM50M25E-UN	M50 x 1.5	M25 x 1.5	15.0	15.0	55.0	61.9	6.0
RM50M32E-UN	M50 x 1.5	M32 x 1.5	15.0	15.0	55.0	61.9	6.0
RM50M40E-UN	M50 x 1.5	M40 x 1.5	15.0	15.0	55.0	61.9	6.0
RM63M20E-UN	M63 x 1.5	M20 x 1.5	15.0	15.0	70.0	78.8	6.0
RM63M25E-UN	M63 x 1.5	M25 x 1.5	15.0	15.0	70.0	78.8	6.0
RM63M32E-UN	M63 x 1.5	M32 x 1.5	15.0	15.0	70.0	78.8	6.0
RM63M40E-UN	M63 x 1.5	M40 x 1.5	15.0	15.0	70.0	78.8	6.0
RM63M50E-UN	M63 x 1.5	M50 x 1.5	15.0	15.0	70.0	78.8	6.0
RM75M20E-UN	M75 x 1.5	M20 x 1.5	15.0	15.0	80.0	90.0	6.0
RM75M25E-UN	M75 x 1.5	M25 x 1.5	15.0	15.0	80.0	90.0	6.0
RM75M32E-UN	M75 x 1.5	M32 x 1.5	15.0	15.0	80.0	90.0	6.0
RM75M40E-UN	M75 x 1.5	M40 x 1.5	15.0	15.0	80.0	90.0	6.0
RM75M50E-UN	M75 x 1.5	M50 x 1.5	15.0	15.0	80.0	90.0	6.0
RM75M63E-UN	M75 x 1.5	M63 x 1.5	15.0	15.0	80.0	90.0	6.0

• For Nickel Plated remove -UN when ordering



### Imperial (ET)-Metric Hazardous Reducers



Code	Entry Thread		Thread Length		Hex Length		
	Male	Female	Male (L1)	Female (F)	A/F	A/C	
RET050M16E-UN	½" / 0.50 ET	M16 x 1.5	15.0	15.0	19.0	22.0	21.0
RET050M20E-UN	½" / 0.50 ET	M20 x 1.5	15.0	15.0	24.0	27.5	21.0
RET075M20E-UN	¾" / 0.75 ET	M20 x 1.5	15.0	15.0	24.0	27.5	21.0
RET075M25E-UN	¾" / 0.75 ET	M25 x 1.5	15.0	15.0	30.5	35.0	21.0
RET100M20E-UN	1" / 1.00 ET	M20 x 1.5	15.0	15.0	30.5	35.0	5.0
RET100M25E-UN	1" / 1.00 ET	M25 x 1.5	15.0	15.0	30.5	35.0	5.0
RET125M20E-UN	1¼" / 1.25 ET	M20 x 1.5	15.0	15.0	38.0	42.0	5.0
RET125M25E-UN	1¼" / 1.25 ET	M25 x 1.5	15.0	15.0	38.0	42.0	5.0
RET150M20E-UN	1½" / 1.50 ET	M20 x 1.5	15.0	15.0	42.5	49.0	5.0
RET150M25E-UN	1½" / 1.50 ET	M25 x 1.5	15.0	15.0	42.5	49.0	5.0

• For Nickel Plated remove -UN when ordering

### PG-Metric Hazardous Reducers

Reduces housing entry thread.

• PG - ISO Metric range.

**Equipment Protection Levels:**

IECEX/INMETRO: Ex db I Mb / Ex eb I Mb / Ex db IIC Gb / Ex eb IIC Gb / Ex ta IIIC Da / Ex nR IIC

ATEX: Ⓢ I M2 Ex db I Mb / Ex eb I Mb, Ⓢ II 2G 1D Ex db IIC Gb / Ex eb IIC Gb / Ex ta IIIC Da

**Protection:** IP66 / IP68 (2m cont.)

**Temperature Range:** -60°C to 95°C (-60°C to 160°C with High Temp Gasket)

**Material:** Brass or Nickel Plated Brass (Marine Grade)



Code	Entry Thread		Thread Length				Hex Length	
	Male	Female	Male (L1)	Female (F)	A/F	A/C	Min (G)	
RPG16M20E-UN	PG16	M20 x 1.5	15.0	15.0	32.0	36.0	7.0	
RPG21M20E-UN	PG21	M20 x 1.5	17.0	15.0	35.0	39.4	7.0	
RPG21M25E-UN	PG21	M25 x 1.5	17.0	15.0	36.0	40.7	7.0	
RPG29M20E-UN	PG29	M20 x 1.5	17.0	15.0	50.0	56.3	7.0	
RPG29M25E-UN	PG29	M25 x 1.5	17.0	15.0	50.0	56.3	7.0	
RPG29M32E-UN	PG29	M32 x 1.5	17.0	15.0	50.0	56.3	7.0	
RPG36M20E-UN	PG36	M20 x 1.5	17.0	15.0	60.0	67.5	7.0	
RPG36M25E-UN	PG36	M25 x 1.5	17.0	15.0	60.0	67.5	7.0	
RPG36M32E-UN	PG36	M32 x 1.5	17.0	15.0	60.0	67.5	7.0	
RPG36M40E-UN	PG36	M40 x 1.5	17.0	15.0	60.0	67.5	7.0	
RPG42M20E-UN	PG42	M20 x 1.5	17.0	15.0	60.0	67.5	7.0	
RPG42M25E-UN	PG42	M25 x 1.5	17.0	15.0	60.0	67.5	7.0	
RPG42M32E-UN	PG42	M32 x 1.5	17.0	15.0	60.0	67.5	7.0	
RPG42M40E-UN	PG42	M40 x 1.5	17.0	15.0	60.0	67.5	7.0	
RPG42M50E-UN	PG42	M50 x 1.5	17.0	15.0	60.0	67.5	7.0	
RPG48M32E-UN	PG48	M32 x 1.5	17.0	15.0	70.0	78.0	7.0	
RPG48M40E-UN	PG48	M40 x 1.5	17.0	15.0	70.0	78.0	7.0	
RPG48M50E-UN	PG48	M50 x 1.5	17.0	15.0	70.0	78.0	7.0	

• For Nickel Plated remove -UN when ordering

### NPT-Metric Hazardous Reducers

Reduces housing entry thread.

• NPT - ISO Metric range.

**Equipment Protection Levels:**

IECEX/INMETRO: Ex db I Mb / Ex eb I Mb / Ex db IIC Gb / Ex eb IIC Gb / Ex ta IIIC Da / Ex nR IIC

ATEX: Ⓢ I M2 Ex db I Mb / Ex eb I Mb, Ⓢ II 2G 1D Ex db IIC Gb / Ex eb IIC Gb / Ex ta IIIC Da

**Protection:** IP65 / IP66

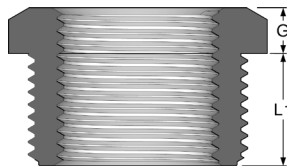
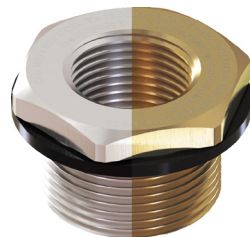
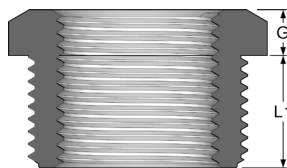
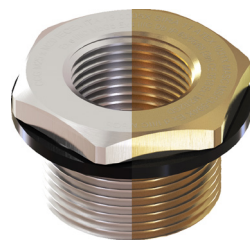
**Temperature Range:** -60°C to 95°C

**Material:** Brass or Nickel Plated Brass (Marine Grade)



Code	Entry Thread		Thread Length				Hex Length	
	Male	Female	Male (L1)	Female (F)	A/F	A/C	Min (G)	
RN075M20E-UN	¾" / 0.75 NPT	M20 x 1.5	15.0	15.0	27.0	30.4	6.0	
RN100M20E-UN	1" / 1.00 NPT	M20 x 1.5	19.0	15.0	35.0	39.4	6.0	
RN100M25E-UN	1" / 1.00 NPT	M25 x 1.5	19.0	15.0	42.0	47.3	6.0	
RN125M20E-UN	1¼" / 1.25 NPT	M20 x 1.5	19.0	15.0	42.0	47.3	6.0	
RN125M25E-UN	1¼" / 1.25 NPT	M25 x 1.5	19.0	15.0	42.0	47.3	6.0	
RN125M32E-UN	1¼" / 1.25 NPT	M32 x 1.5	19.0	15.0	42.0	47.3	6.0	
RN150M20E-UN	1½" / 1.50 NPT	M20 x 1.5	21.0	15.0	48.0	54.0	6.0	
RN150M25E-UN	1½" / 1.50 NPT	M25 x 1.5	21.0	15.0	48.0	54.0	6.0	
RN150M32E-UN	1½" / 1.50 NPT	M32 x 1.5	21.0	15.0	48.0	54.0	6.0	
RN150M40E-UN	1½" / 1.50 NPT	M40 x 1.5	21.0	15.0	48.0	54.0	6.0	

• For Nickel Plated remove -UN when ordering

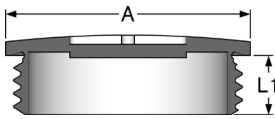


Call the Remora sales team at **01226 352 000**

Challenge us - We find a solution

# Accessories | INDUSTRIAL AREA DOME STOPPING PLUGS

## NYLON DOME HEAD STOPPING PLUGS



### Metric Nylon Dome Head Stopping Plugs

Remora industrial dome head stopping plugs are designed as a cost effective permanent solution for blanking unused pre-threaded holes. A 'cross' slot in the cap enables tightening with a screwdriver.

**Protection:** IP56

IP66 / IP68 (if fitted with sealing washer)

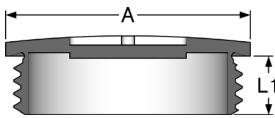
**Temperature Range:** -20°C to 100°C (static)

**Material:** Polystyrene, Impact Resistant

**Colour:** Grey



Code	Entry Thread	Thread Length (L1)	Cap Diameter (A)
EVS12	M12 x 1.5	8.0	15.0
EVS16	M16 x 1.5	9.0	19.0
EVS20	M20 x 1.5	9.5	25.0
EVS25	M25 x 1.5	11.5	30.0
EVS32	M32 x 1.5	12.0	38.0
EVS40	M40 x 1.5	13.0	46.0
EVS50	M50 x 1.5	15.0	56.0
EVS63	M63 x 1.5	17.0	68.0



### PG Nylon Dome Head Stopping Plugs

Remora industrial dome head stopping plugs are designed as a cost effective permanent solution for blanking unused pre-threaded holes. A 'cross' slot in the cap enables tightening with a screwdriver.

**Protection:** IP56

IP66 / IP68 (if fitted with sealing washer)

**Temperature Range:** -20°C to 100°C (static)

**Material:** Polystyrene, Impact Resistant

**Colour:** Grey



Code	Entry Thread	Thread Length (L1)	Cap Diameter (A)
VS7	PG7 x 1.27	8.0	15.0
VS9	PG9 x 1.41	9.0	19.0
VS11	PG11 x 1.41	10.0	22.0
VS13	PG13.5 x 1.41	10.0	25.0
VS16	PG16 x 1.41	9.5	27.0
VS21	PG21 x 1.59	12.0	33.0
VS29	PG29 x 1.59	12.0	44.0
VS36	PG36 x 1.59	15.0	55.0
VS42	PG42 x 1.59	16.0	62.0
VS48	PG48 x 1.59	16.0	68.0



Sealing Washers  
Supplied Separately p.180

## BRASS DOME HEAD STOPPING PLUGS

### Metric Industrial Dome Head Stopping Plugs

- ISO Metric range.
- Also available with long thread (see table below)
- Application; Machines, Devices, Housings, Panels

**Standards:** EN 50262

**Protection:** IP54

IP66 / IP68 (if fitted with sealing washer)

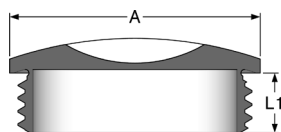
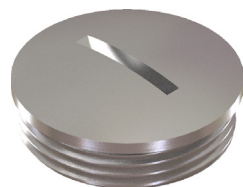
**Temperature Range:** -200°C to 200°C

**Material:** Nickel Plated Brass



Code	Entry Thread	Thread Length (L1)	Cap Diameter (A)
EMVS12	M12 x 1.5	5.0	14.0
EMVS16	M16 x 1.5	5.0	18.0
EMVS20	M20 x 1.5	6.5	22.0
EMVS25	M25 x 1.5	7.0	28.0
EMVS32	M32 x 1.5	8.0	35.0
EMVS40	M40 x 1.5	8.5	44.0
EMVS50	M50 x 1.5	9.0	54.0
EMVS63	M63 x 1.5	10.0	67.0

Long Thread Code	Entry Thread	Thread Length (L1)	Cap Diameter (A)
EMVS-L12	M12 x 1.5	13.0	14.0
EMVS-L16	M16 x 1.5	13.0	18.0
EMVS-L20	M20 x 1.5	13.0	22.0
EMVS-L25	M25 x 1.5	14.0	28.0
EMVS-L32	M32 x 1.5	14.5	35.0
EMVS-L40	M40 x 1.5	14.5	44.0
EMVS-L50	M50 x 1.5	15.5	54.0
EMVS-L63	M63 x 1.5	16.5	67.0



### PG Industrial Dome Head Stopping Plugs

- PG range.
- Application; Machines, Devices, Housings, Panels

**Standards:** EN 50262

**Protection:** IP54

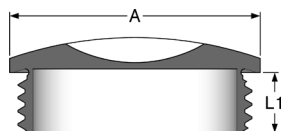
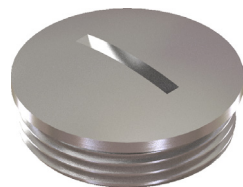
IP66 / IP68 (if fitted with sealing washer)

**Temperature Range:** -200°C to 200°C

**Material:** Nickel Plated Brass



Code	Entry Thread	Thread Length (L1)	Cap Diameter (A)
MV7	PG7 x 1.27	5.0	14.0
MV9	PG9 x 1.41	6.0	17.0
MV11	PG11 x 1.41	6.0	20.0
MV13	PG13.5 x 1.41	6.5	22.0
MV16	PG16 x 1.41	6.5	24.0
MV21	PG21 x 1.59	7.0	30.0
MV29	PG29 x 1.59	8.0	39.0
MV36	PG36 x 1.59	9.0	50.0
MV42	PG42 x 1.59	10.0	57.0
MV48	PG48 x 1.59	10.0	64.0



Call the Remora sales team at **01226 352 000**

Challenge us - We find a solution

Ident & Wiring Term  
Copper Lugs  
Heatshrink Repair  
Cable Joining  
Junction Boxes  
Flexible Conduit  
Cable Glands  
Gland Accs.  
Cable Cleats  
Earthing Lightning  
MCC Cable  
Cable Ties & Acc  
Tooling & Cable Prep  
Fixing & Security

# Accessories | HAZARDOUS AREA DOME STOPPING PLUGS

## HAZARDOUS AREA DOME STOPPING PLUGS

Ident & Wing Term  
Copper Lugs  
Heatshrink Repair  
Cable Joining  
Junction Boxes  
Flexible Conduit  
Cable Glands  
Gland Accs.  
Cable Cleats  
Earthing Lightning  
MCC Cable  
Cable Ties & Acc  
Tooling & Cable Prep  
Fixing & Security



### Metric Hazardous Dome Head Stopping Plug - Brass

- ISO Metric range.
- Application; Hazardous Area, Machines, Devices, Housings, Panels
- Equipment Protection Levels:**  
IECEX: Ex db I Mb / Ex eb I Mb / Ex db IIC Gb / Ex eb IIC Gb / Ex ta IIIC Da / Ex nR IIC ATEX: Ⓢ I M2 Ex db I Mb / Ex eb I Mb, Ⓢ II 2G 1D Ex db IIC Gb / Ex eb IIC Gb / Ex ta IIIC Da

**Protection:** IP66 / IP68  
**Temperature Range:** -60°C to 95°C (-60°C to 160°C with High Temp Gasket)  
**Material:** Brass or Nickel Plated Brass (Marine Grade)



Code	Entry Thread	Thread Length (L1)	Head Diameter	Allen Key AF
353016-UN	M16 x 1.5	16.0	22.0	10.0
353020-UN	M20 x 1.5	16.0	25.0	10.0
353025-UN	M25 x 1.5	16.0	35.0	10.0
353032-UN	M32 x 1.5	16.0	42.0	10.0
353040-UN	M40 x 1.5	16.0	50.0	10.0
353050-UN	M50 x 1.5	16.0	60.0	10.0
353063-UN	M63 x 1.5	16.0	70.0	14.0
353075-UN	M75 x 1.5	16.0	85.0	14.0
353080-UN	M80 x 2.0	20.0	90.0	14.0
353090-UN	M90 x 2.0	20.0	100.0	14.0
353100-UN	M100 x 2.0	20.0	110.0	14.0

• For Nickel Plated remove -UN when ordering

### Metric Hazardous Dome Head Stopping Plug - Nylon

- ISO Metric range.
- Application; Machines, Devices, Housings, Panels
- Standards:** IECEX: : Ex eb IIC Gb, Ex tb IIIC Db, Ex nR IIC Gc  
ATEX: Ⓢ II2GD, Ex eb IIC Gb, Ex tb IIIC Db, Ex nR IIC Gc

**Protection:** IP66 / IP68  
**Temperature Range:** -20°C to 95°C  
**Material:** HDPE, Nylon



Code	Entry Thread	Thread Length (L1)	Head Diameter	Allen Key AF
352716	M16 x 1.5	15.0	20.5 (min)	6.0
352720	M20 x 1.5	12.0	28.0 (min)	10.0
352725	M25 x 1.5	15.0	33.0 (min)	10.0
352732	M32 x 1.5	15.0	40.0 (min)	10.0
352740	M40 x 1.5	15.0	48.0 (min)	14.0
352750	M50 x 1.5	15.0	56.0 (min)	19.0
352763	M63 x 1.5	15.0	69.0 (min)	19.0
352775	M75 x 1.5	15.0	81.0 (min)	19.0

### Insulated Exe Adaptor - Nylon

Nylon Exe Adaptors provide a means of connection between dissimilar thread forms or sizes. Certified Adaptors should be used following the basic rules in line with good engineering practice: No more than one conversion Adaptor should be used at one time in any given cable entry. Stopping Plugs should be fitted directly into unused entries of the equipment and not into an Adaptor. Insulated Adaptors provide a vital safety precaution for systems with sensitive electronic equipment that are reliant on an interference free power supply.

- Exe Adaptors are supplied fitted with an 'O' ring to maintain the IP integrity
- Independently tested to IP68.

**Hazardous:** IECEx: Ex eb IIC Gb, Ex tb IIIC Db IEC 60079-0, IEC 60079-7, IEC 60079-31  
ATEX: II 2 GD, Ex e IIC Gb, Ex tb IIIC Db EN 60079-0, EN 60079-7, EN 60079-31



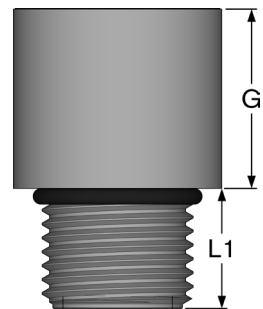
**IP Protection:** IP66 / IP68

**Temperature Range:** -20°C to 65°C

**Material:** Glass Filled Nylon



Code	Entry Thread		Thread Length		Body Diameter Min	Body Length Min (G)	Bore
	Male	Female	Male (L1)	Female			
INSM16/M16	M16 x 1.5	M16 x 1.5	15.0	15.0	24.0	20.0	8.0
INSM20/M20	M20 x 1.5	M20 x 1.5	15.0	15.0	27.5	20.0	12.5
INSM25/M25	M25 x 1.5	M25 x 1.5	15.0	15.0	35.5	20.0	17.5
INSM32/M32	M32 x 1.5	M32 x 1.5	15.0	15.0	41.0	20.0	24.5
INSM40/M40	M40 x 1.5	M40 x 1.5	15.0	15.0	50.0	20.0	32.5
INSM50/M50	M50 x 1.5	M50 x 1.5	15.0	15.0	60.0	20.0	42.5
INSM63/M63	M63 x 1.5	M63 x 1.5	15.0	15.0	75.0	20.0	53.0
INSM75/M75	M75 x 1.5	M75 x 1.5	15.0	15.0	85.0	20.0	64.0
INSM90/M90	M90 x 2.0	M90 x 2.0	20.0	20.0	100.0	20.0	76.0



# Accessories | HEX HEAD STOPPING PLUGS

## INDUSTRIAL AREA METRIC

Ident & Wiring Term  
Copper Lugs  
Heatshrink Repair  
Cable Joining  
Junction Boxes  
Flexible Conduit  
Cable Glands  
Gland Acce.  
Cable Cleats  
Earthing Lightning  
MCC Cable  
Cable Ties & Acc  
Tooling & Cable Prep  
Fixing & Security



### Hex Head Nylon Stopping Plugs

Remora industrial Hex Head stopping plugs are designed as a cost effective permanent solution for blanking unused pre-threaded holes.

**Protection:** IP56

IP66 (if fitted with sealing washer)

**Temperature Range:** -20°C to 80°C(static) 120°(temp)

**Material:** PA6 (Nylon) UL94 V2

**Colour:** Black or White



Black Code	White Code	Entry Thread	Thread Length (L1)	A/F	A/C
NSTP16	NSTP16W	M16 x 1.5	12.0	19.0	22.0
NSTP20	NSTP20W	M20 x 1.5	12.0	23.0	26.0
NSTP25	NSTP25W	M25 x 1.5	13.5	28.0	32.0
NSTP32	NSTP32W	M32 x 1.5	13.5	36.0	41.0

### Hex Head Brass Stopping Plugs

Remora industrial Hex Head stopping plugs are designed as a cost effective permanent solution for blanking unused pre-threaded holes.

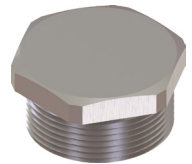
**Standards:** EN 50262

**Protection:** IP54

IP66 (if fitted with sealing washer)

**Temperature Range:** -60°C to 200°C

**Material:** Nickel Plated Brass



Code	Entry Thread	Thread Length (L1)	A/F
STPH16	M16 x 1.5	12.0	18.0
STPH20	M20 x 1.5	13.0	22.0
STPH25	M25 x 1.5	13.0	27.0
STPH32	M32 x 1.5	16.0	34.0
STPH40	M40 x 1.5	18.0	43.0
STPH50	M50 x 1.5	18.0	54.0
STPH63	M63 x 1.5	18.0	68.0
STPH75	M75 x 1.5	20.0	80.0



Sealing Washers  
Supplied Separately p.180



### Metric Hazardous Hex Head Stopping Plug - Brass

- ISO Metric range.
- Application; Hazardous Area, Machines, Devices, Housings, Panels
- Equipment Protection Levels:**  
IECEX: Ex db I Mb / Ex eb I Mb / Ex db IIC Gb / Ex eb IIC Gb / Ex ta IIIC Da / Ex nR IIC  
ATEX: Ⓢ I M2 Ex db I Mb / Ex eb I Mb, Ⓢ II 2G 1D Ex db IIC Gb / Ex eb IIC Gb / Ex ta IIIC Da

**Protection:** IP66 / IP68  
**Temperature Range:** -60°C to 95°C (-60°C to 160°C with High Temp Gasket)  
**Material:** Brass or Nickel Plated Brass (Marine Grade)



Code	Entry Thread	Thread Length (L1)	A/F	A/C
STPDH16-UN	M16 x 1.5	15.0	19.0	22.0
STPDH20-UN	M20 x 1.5	15.0	24.0	27.0
STPDH25-UN	M25 x 1.5	15.0	27.9	33.0
STPDH32-UN	M32 x 1.5	15.0	37.6	43.0
STPDH40-UN	M40 x 1.5	15.0	47.2	54.0
STPDH50-UN	M50 x 1.5	15.0	55.9	64.0
STPDH63-UN	M63 x 1.5	15.0	70.0	81.0
STPDH75-UN	M75 x 1.5	15.0	80.0	101.0
STPDH80-UN	M80 x 2.0	20.0	90.0	103.5
STPDH90-UN	M90 x 2.0	20.0	95.0	109.4
STPDH100-UN	M100 x 2.0	20.0	105.0	121.0

- For Nickel Plated remove -UN when ordering

### NPT Hazardous Hex Head Stopping Plug - Brass

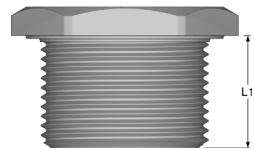
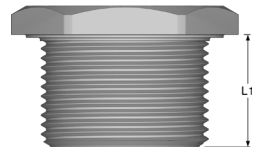
- National Pipe Thread (NPT) range.
- Application; Hazardous Area, Machines, Devices, Housings, Panels
- Equipment Protection Levels:**  
IECEX: Ex db I Mb / Ex eb I Mb / Ex db IIC Gb / Ex eb IIC Gb / Ex ta IIIC Da / Ex nR IIC  
ATEX: Ⓢ I M2 Ex db I Mb / Ex eb I Mb, Ⓢ II 2G 1D Ex db IIC Gb / Ex eb IIC Gb / Ex ta IIIC Da

**Protection:** IP65 / IP66  
**Temperature Range:** -60°C to 95°C  
**Material:** Brass or Nickel Plated Brass (Marine Grade)



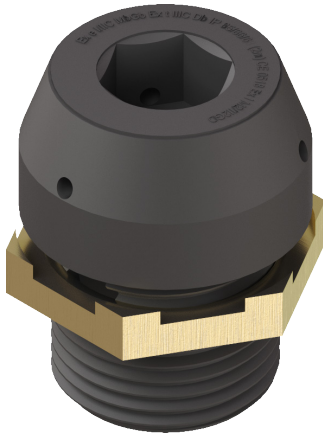
Code	Entry Thread	Thread Length (L1)	A/F	A/C
STPDH0.50NPT-UN	½" / 0.50 NPT	20.0	24.0	27.5
STPDH0.75NPT-UN	¾" / 0.75 NPT	20.5	30.0	33.0
STPDH1.00NPT-UN	1" / 1.00 NPT	25.0	38.1	43.0
STPDH1.25NPT-UN	1¼" / 1.25 NPT	26.0	50.8	54.0
STPDH1.50NPT-UN	1½" / 1.50 NPT	26.5	57.2	64.5
STPDH2.00NPT-UN	2" / 2.00 NPT	27.0	70.0	80.8
STPDH2.50NPT-UN	2½" / 2.50 NPT	40.5	80.0	92.1
STPDH3.00NPT-UN	3" / 3.00 NPT	42.0	95.0	117.0

- For Nickel Plated remove -UN when ordering



# Accessories | BREATHER DRAIN PLUGS

## HAZARDOUS AREA EXE NYLON BREATHER DRAIN PLUG



### Nylon Exe Breather Drain Plug

The Exe Nylon breather drain effectively drains moisture from an enclosure and allows air from the enclosure to vent into the surrounding atmosphere thereby minimising moisture build up.

- The Exe version is supplied with a brass castellated nut
- Drains water from equipment susceptible to moisture collection.
- Enables equipment to breathe whilst maintaining protection levels.

**Standards:** ATEX: -II 2 GD, Ex e II only

**Certification:** IECEx SIR 09.0096U  
ATEX SIR 10ATEX3279U EN 50019:1994 EN 50281-1-1:1998



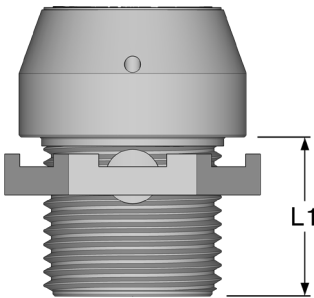
**IP Protection:** IP66

**Temperature Range:** -20°C to 65°C

**Material:** Glass Filled Nylon



Code	Protection	Entry Thread				
	Level	Type	Min Length (L1)	Allen Key AF	Head Diameter	Head Protrusion
TT-M20-N-EX	Exe	M20 x 1.5	10.0	10.0	25.4	14.0
TT-M25-N-EX	Exe	M25 x 1.5	10.0	10.0	30.5	14.0
TT-M32-N-EX	Exe	M32 x 1.5	10.0	10.0	38.0	14.0



## HAZARDOUS AREA BREATHER DRAIN PLUGS

### Hazardous Area Brass Breather Drain Plugs

The Exd (Type BDM\*\*D) and the Exe (Type BDM\*\*E) effectively drain moisture from an enclosure and allow air from the enclosure to vent into the surrounding atmosphere thereby minimising moisture build up.

- The Exe version is supplied with a castellated nut or optional serrated washer and standard locknut for high vibration applications.
- Drains water from equipment susceptible to moisture collection.
- Enables equipment to breathe whilst maintaining protection levels.

#### Equipment Protection Levels:

IECEX: (BD\*\*E) Exe IIC Gb / Ex tb IIIC Db (BD\*\*D) Ex d IIC Gb / Ex tb IIIC Db  
 ATEX/UKEX:(BD\*\*E) ⓈII 2 G D Ex eb IIC Gb / Ex tb IIIC Db (BD\*\*D) ⓈII 2 G D Ex db IIC Gb / Ex tb IIIC Db  
**Certification:** IECEx CML 16.00021X IEC 60079-0, IEC 60079-1, IEC 60079-7,  
 IEC 60079-31  
 ATEX CML 16ATEX1029X EN 60079-0, EN 60079-1, EN 60079-7,  
 EN 60079-31



**IP Protection:** IP66 (Exe) / IP6X (Exd)

**Temperature Range:** -20°C to 95°C

**Material:** Brass / Nickel Plated Brass



• BDM\*\*D-UN



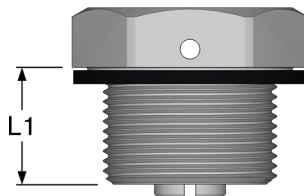
• BDM\*\*E-UN

Code	Protection		Entry Thread			
	Level		Type	Min Length (L1)	A/F	A/C
BDM20D-UN	Exd		M20 x 1.5	15.0	24.0	27.0
BDM25D-UN	Exd		M25 x 1.5	15.0	32.0	36.0
BDN050D-UN	Exd		½" NPT	15.0	24.0	27.0
BDN075D-UN	Exd		¾" NPT	15.0	32.0	36.0

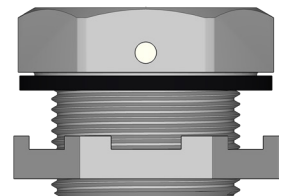
- For Nickel Plated remove -UN when ordering

Code	Protection		Entry Thread			
	Level		Type	Min Length (L1)	A/F	A/C
BDM20E-UN	Exe		M20 x 1.5	12.0	24.0	27.0
BDM25E-UN	Exe		M25 x 1.5	12.0	32.0	36.0
BDN050E-UN	Exe		½" NPT	15.0	24.0	27.0
BDN075E-UN	Exe		¾" NPT	15.0	32.0	36.0

- For Nickel Plated remove -UN when ordering



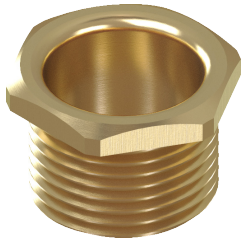
• BDM\*\*D-UN



• BDM\*\*E-UN

# Accessories | BUSHES & COUPLERS

## METRIC BRASS BUSHES



### Male Brass Bushes

Brass Bushes are designed to protect cables from sharp edges when entering trunking or equipment. Standard bushes are supplied with hexagon body. Manufactured from high quality brass BS 2874 CZ121 Pb3.

- ISO Metric range.
- Application; Machines, Devices, Housings, Panels

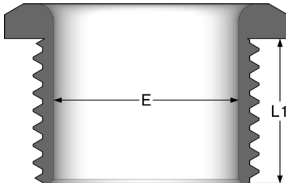
**Standards:** EN 50262

**Temperature Range:** -60°C to 200°C

**Material:** Brass BS 2874 CZ121 Pb3



Code	Entry Thread	Thread Length (L1)	Bore (E)
MBBM20	M20 x 1.5	12.5	16.0
MBBM25	M25 x 1.5	13.0	21.3
MBBM32	M32 x 1.5	14.5	27.7
MBBM40	M40 x 1.5	15.0	34.5
MBBM50	M50 x 1.5	15.0	44.7
MBBM63	M63 x 1.5	15.5	56.5
MBBM75	M75 x 1.5	16.5	68.5
MBBM100	M100 x 2.0	20.0	92.7



### Female Brass Bushes

Female Bushes are used on the end of conduit tube or any other male threaded component to protect the cabling from any sharp edges.

- ISO Metric range.
- Application; Machines, Devices, Housings, Panels

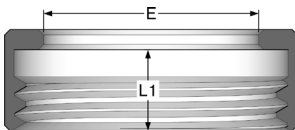
**Standards:** EN 50262

**Temperature Range:** -60°C to 200°C

**Material:** Brass BS 2874 CZ121 Pb3



Code	Entry Thread	Thread Length (L1)	Bore (E)
FBBM20	M20 x 1.5	6.0	16.0
FBBM25	M25 x 1.5	5.5	21.3
FBBM32	M32 x 1.5	5.0	27.7
FBBM40	M40 x 1.5	7.0	34.5
FBBM50	M50 x 1.5	9.0	44.7
FBBM63	M63 x 1.5	12.0	56.5
FBBM75	M75 x 1.5	15.0	68.5



## METRIC BRASS COUPLERS

### Brass Couplers

- ISO Metric range.
- Application; Machines, Devices, Housings, Panels

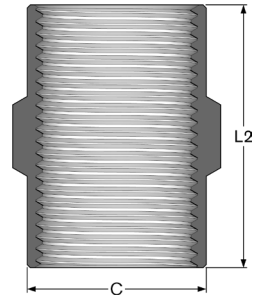
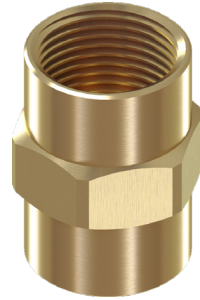
**Standards:** EN 50262

**Temperature Range:** -60°C to 200°C

**Material:** Brass BS 2874 CZ121 Pb3



Code	Entry Thread	Length (L2)	Diameter (C)
CM20M20	M20 x 1.5	33.0	22.5
CM25M25	M25 x 1.5	34.0	27.0
CM32M32	M32 x 1.5	38.0	34.2
CM40M40	M40 x 1.5	40.0	42.6
CM50M50	M50 x 1.5	41.0	53.0
CM63M63	M63 x 1.5	43.0	66.4
CM75M75	M75 x 1.5	45.0	78.8



### Brass Locknuts

- ISO Metric range.
- Application; Machines, Devices, Housings, Panels

**Temperature Range:** -60°C to 200°C

**Material:** Brass BS 2874 CZ121 Pb3

**Finish:** Plain Brass



#### Unplated Brass

Code	Entry Thread	A/F	A/C	Thickness	Pack QTY
UBLN12	M12 x 1.5	15.0	16.5	3.0	100
UBLN16	M16 x 1.5	20.0	22.0	3.5	100
UBLN1	M20 x 1.5	24.0	26.5	4.0	100
UBLN2	M25 x 1.5	30.0	33.0	3.5	100
UBLN3	M32 x 1.5	40.0	44.0	4.0	100
UBLN4	M40 x 1.5	46.0	50.0	4.5	50
UBLN5	M50 x 1.5	65.0	72.0	5.0	25
UBLN6	M63 x 1.5	80.0	88.0	6.5	25
UBLN7	M75 x 1.5	90.0	98.0	6.5	10
UBLN8	M80 x 2.0	97.0	109.0	8.0	2
UBLN9	M90 x 2.0	112.0	125.0	10.0	2
UBLN10	M100 x 2.0	115.0	131.5	7.0	2



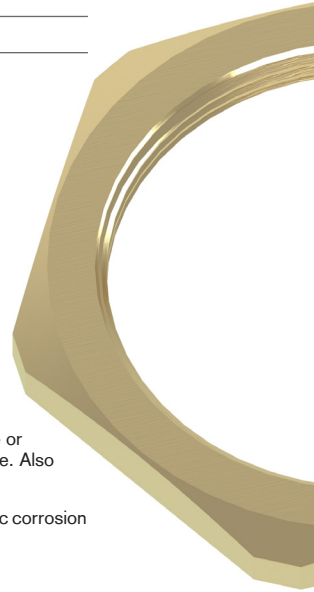
## LOCKNUTS

# Locknuts

Locknuts are used for securing cable glands in position, and are used on the cable gland entry thread. They ensure that the cable gland doesn't come loose, which is highly desired due to the power that could be flowing through them at any one time. Remora locknuts go a long way towards keeping everything together, even in areas where stress on the cable gland is more frequent. Used in conjunction with our earth tags and washers, these locknuts form the most secure cable gland set-up one could hope for. Available in Metric, PG, NPT, BSP and ET (imperial) threads.

### Material Selection

- **Brass** - Recommended for securing brass Cable Glands and Accessories to a gland plate or into equipment. High dimensional stability, even under the effect of increased temperature. Also available in Nickel Plated corrosion resistant finish.
- **Aluminium** - Recommended when installing aluminium Cable Glands to prevent the galvanic corrosion which can occur when dissimilar metals are coupled together.
- **Stainless Steel** - Corrosion resistant with increased strength at high temperatures.
- **Nylon** - Recommended for securing nylon Cable Glands and Accessories.



### PrimeNut™ - Earthing Locknuts

Earth Nuts are designed to speed up the installation of cable glands by replacing the earth tag and lock nut to provide a high integrity earth connection.

- Cutting teeth bite into the enclosure surface enabling the gland to be tightened from the outside
- No Extra drilling compared to traditional earth tag method

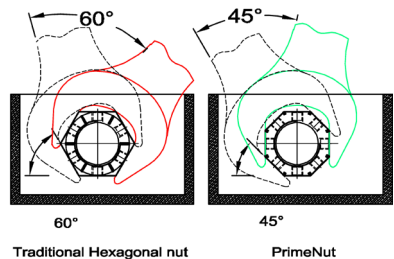
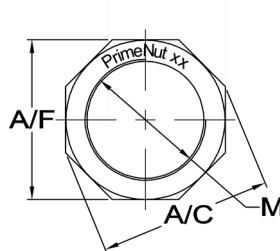
**Temperature Range:** -60°C to 200°C

**Material:** Brass BS 2874 CZ121 Pb3

**Finish:** Plain Brass



Code	Entry Thread 'M'	A/F	A/C	Width	Screw Thread	Pack QTY
UBEN1	M20 x 1.5	26.0	28.1	7.0	M4 x 0.7	10.0
UBEN2	M25 x 1.5	32.0	34.6	10.0	M4 x 0.7	10.0
UBEN3	M32 x 1.5	41.0	44.4	12.0	M5 x 0.8	4.0



### Brass Locknuts

Brass Locknuts are recommended for use in securing brass cable glands, unions, thread converters and stopping plugs. Manufactured from extrusion brass (BS 2874 CZ121 Pb3) and available in both a plain finish or with a corrosion resistant nickel plating.

**Temperature Range:** -60°C to 200°C

**Material:** Brass BS 2874 CZ121 Pb3

**Finish:** Plain Brass or Nickel Plated



Metric

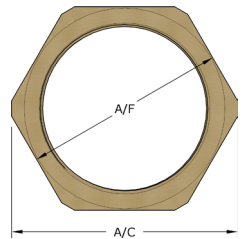
Unplated Brass		Nickel Plated Brass				
Code	Code	Entry Thread	A/F	A/C	Thickness	Pack QTY
	BLN12	M12 x 1.5	15.0	16.5	3.0	100
UBLN16	BLN16	M16 x 1.5	20.0	22.0	3.5	100
UBLN1	BLN1	M20 x 1.5	24.0	26.5	4.0	100
UBLN2	BLN2	M25 x 1.5	30.0	33.0	3.5	100
UBLN3	BLN3	M32 x 1.5	40.0	44.0	4.0	100
UBLN4	BLN4	M40 x 1.5	46.0	50.0	4.5	50
UBLN5	BLN5	M50 x 1.5	65.0	72.0	5.0	25
UBLN6	BLN6	M63 x 1.5	80.0	88.0	6.5	25
UBLN7	BLN7	M75 x 1.5	90.0	98.0	6.5	10
UBLN8	BLN8	M80 x 2.0	97.0	109.0	8.0	2
UBLN9	BLN9	M90 x 2.0	112.0	125.0	10.0	2
UBLN10	BLN10	M100 x 2.0	115.0	131.5	7.0	2

NPT

Unplated Brass		Nickel Plated Brass				
Code	Code	Entry Thread	A/F	A/C	Thickness	Pack QTY
UBLN050NPT	BLN050NPT	½" NPT	27.0	29.0	3.0	100
UBLN075NPT	BLN075NPT	¾" NPT	30.0	33.0	4.0	100
UBLN100NPT	BLN100NPT	1" NPT	35.5	40.0	6.0	100
UBLN125NPT	BLN125NPT	1¼" NPT	46.0	50.5	6.0	100
UBLN150NPT	BLN150NPT	1½" NPT	55.0	60.5	6.0	50
UBLN200NPT	BLN200NPT	2" NPT	65.0	71.0	6.0	50
UBLN250NPT	BLN250NPT	2½" NPT	90.0	99.0	9.0	25
UBLN300NPT	BLN300NPT	3" NPT	104.0	115.0	9.0	25
UBLN350NPT	BLN350NPT	3½" NPT	114.0	125.0	10.0	10

PG

Nickel Plated Brass						
Code	Entry Thread	A/F	A/C	Thickness	Pack QTY	
BLNPG7	PG7 x 1.27	15.0	16.5	2.8	100	
BLNPG9	PG9 x 1.41	18.0	20.0	2.8	100	
BLNPG11	PG11 x 1.41	21.0	24.0	3.0	100	
BLNPG13	PG13.5 x 1.41	23.0	26.0	3.0	100	
BLNPG16	PG16 x 1.41	26.0	30.0	3.0	100	
BLNPG21	PG21 x 1.59	32.0	36.0	3.5	50	
BLNPG29	PG29 x 1.59	41.0	45.0	4.0	50	
BLNPG36	PG36 x 1.59	51.0	57.0	5.0	25	
BLNPG42	PG42 x 1.59	60.0	65.0	5.0	25	
BLNPG48	PG48 x 1.59	64.0	69.0	6.0	10	



Call the Remora sales team at **01226 352 000**

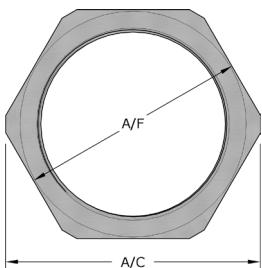
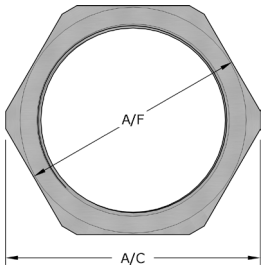
Challenge us - We find a solution

Ident & Wiring Term  
Copper Lugs  
Heatshrink Repair  
Cable Joining  
Junction Boxes  
Flexible Conduit  
Cable Glands  
Gland Accs.  
Cable Cleats  
Earthing/Lighting  
MCC Cable  
Cable Ties & Acc  
Tooling & Cable Prep  
Fixing & Security



## LOCKNUTS

Ident & Wiring Term  
Copper Lugs  
Heatshrink Repair  
Cable Jointing  
Junction Boxes  
Flexible Conduit  
Cable Glands  
Gland Accs.  
Cable Cleats  
Earthing Lightning  
MIBC Cable  
Cable Ties & Acc  
Tooling & Cable Prep  
Fixing & Security

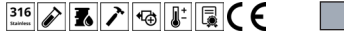


### Stainless Steel Locknuts

Stainless Steel Locknuts are recommended for use where prolonged submersion or increased corrosion resistance is required. Manufactured from 316 (A4) Stainless Steel.

**Temperature Range:** -100°C to 400°C

**Material:** 316 (A4) Stainless Steel



#### Stainless

Code	Entry Thread	A/F	A/C	Thickness	Pack QTY
SSLN12	M12 x 1.5	15.0	16.5	3.0	100
SSLN16	M16 x 1.5	22.0	24.0	4.0	100
SSLN1	M20 x 1.5	25.4	27.9	4.0	100
SSLN2	M25 x 1.5	30.0	33.0	4.0	100
SSLN3	M32 x 1.5	40.0	44.0	4.0	100
SSLN4	M40 x 1.5	46.0	50.5	4.8	50
SSLN5	M50 x 1.5	65.0	71.5	5.0	25
SSLN6	M63 x 1.5	80.0	88.0	6.4	25
SSLN7	M75 x 1.5	90.0	99.0	7.0	10
SSLN8	M80 x 2.0	90.0	99.0	9.0	2
SSLN9	M90 x 2.0	104.8	115.3	9.0	2
SSLN10	M100 x 2.0	114.3	125.7	9.0	2

Metric

Code	Entry Thread	A/F	A/C	Thickness	Pack QTY
SSLN050NPT	½" NPT	27.0	29.7	3.2	100
SSLN075NPT	¾" NPT	30.5	33.5	4.0	100
SSLN100NPT	1" NPT	36.0	39.5	6.4	100
SSLN125NPT	1½" NPT	46.0	50.5	6.4	100
SSLN150NPT	1½" NPT	55.0	60.6	6.4	100
SSLN200NPT	2" NPT	65.0	70.8	6.4	50
SSLN250NPT	2½" NPT	90.0	99.0	9.0	50
SSLN300NPT	3" NPT	104.8	115.3	9.0	25
SSLN350NPT	3½" NPT	114.3	125.7	10.0	10

NPT

### Aluminium Locknuts

Aluminium Locknuts are recommended when installing aluminium Cable Glands to prevent the galvanic corrosion which can occur when dissimilar metals are coupled together.

**Temperature Range:** -60°C to 130°C

**Material:** Aluminium 6082 HE30



#### Aluminium

Code	Entry Thread	A/F	A/C	Thickness	Pack QTY
ALN16	M16 x 1.5	24.0	36.4	4.0	100
ALN1	M20 x 1.5	27.0	29.7	4.0	100
ALN2	M25 x 1.5	30.0	33.0	4.0	100
ALN3	M32 x 1.5	40.0	44.0	4.0	100
ALN4	M40 x 1.5	50.0	55.0	4.5	100
ALN5	M50 x 1.5	65.0	71.5	5.0	50
ALN6	M63 x 1.5	75.0	82.5	6.5	25
ALN7	M75 x 1.5	90.0	99.0	7.0	10

All dimensions in mm except where stated

### Nylon Locknuts

Remora Metric nylon locknuts. Use this code if you wish to order locknuts separately from glands.

**Temperature Range:** -40°C to 100°C (static)

**Material:** PA6 (Nylon)

**Colour:** Black, Grey, Red, White (PG locknuts & M40-M63 Black and Grey Only)



Metric

Metric Code	Entry Thread	A/F	A/C	Thickness	Pack QTY
NLN12*	M12 x 1.5	20.0	22.0	5.0	100
NLN16*	M16 x 1.5	20.0	22.0	7.0	100
NLN20*	M20 x 1.5	22.0	26.5	7.0	100
NLN25*	M25 x 1.5	28.0	32.0	8.0	100
NLN32*	M32 x 1.5	38.0	42.0	8.0	100
NLN40*	M40 x 1.5	50.0	55.0	8.0	50
NLN50*	M50 x 1.5	60.0	66.0	9.0	25
NLN63*	M63 x 1.5	75.0	82.0	10.0	10

NLN 20 B

Prefix

Size

Colour:

B = Black  
G = Grey  
R = Red  
W = White



PG

### PG

PG Code	Entry Thread	A/F	A/C	Thickness	Pack QTY
NLNPG7*	PG7	15.0	17.0	5.0	100
NLNPG9*	PG9	22.0	24.0	5.0	100
NLNPG11*	PG11	24.0	26.0	5.0	100
NLNPG13.5*	PG13.5	28.0	30.0	6.0	100
NLNPG16*	PG16	30.0	32.5	6.0	100
NLNPG21*	PG21	36.0	39.0	7.0	50
NLNPG29*	PG29	47.0	50.0	7.5	50
NLNPG36*	PG36	60.0	65.0	8.0	25
NLNPG42*	PG42	64.0	71.0	10.0	25
NLNPG48*	PG48	70.0	76.0	10.0	10



Call the Remora sales team at **01226 352 000**

Challenge us - We find a solution

Ident & Wiring Term  
Copper Lugs  
Heatshrink Repair  
Cable Joining  
Junction Boxes  
Flexible Conduit  
Cable Glands  
Gland Accs.  
Cable Cleats  
Earthing Lightning  
MCC Cable  
Cable Ties & Acc  
Tooling & Cable Prep  
Fixing & Security

## SEALING WASHERS

# Sealing Washers



Sealing washers form a mechanical seal between the cable gland and equipment panel. This can fill irregularities between “less-than-perfect” mating surfaces forming a liquid tight seal and evenly distributing pressure over the mating surface. The requirement for a sealing washer will depend on the ingress protection rating or code of protection for the equipment the gland is being fitted to.

### Nylon Sealing Washers

• ISO Metric range. Standard Nylon sealing washer.

**Standards:** FDA and BFR Compliant UL94 HB

**Temperature Range:** -40°C to 85°C

**Material:** PA6 Nylon (ISO 1043)



Code	Gland Entry	ID (A)	OD (B)	Pack QTY
NW16	M16	16.5	25.0	100
NW20	M20	20.5	30.0	100
NW25	M25	25.5	36.0	100
NW32	M32	32.5	42.5	100
NW40	M40	40.5	52.0	50
NW50	M50	50.5	64.5	50
NW63	M63	63.5	80.0	25
NW75	M75	75.5	95.0	10

### Nylon Sealing Washers - Lightweight

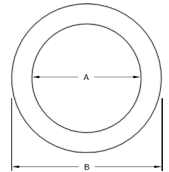
• ISO Metric range. Lightweight Nylon sealing washer.

**Temperature Range:** -40°C to 85°C

**Material:** PA6 Nylon (ISO 1043)



Code	Gland Entry	ID (A)	OD (B)	Pack QTY
NSW16	M16	16.5	22.0	100
NSW20	M20	20.5	25.5	100
NSW25	M25	25.5	32.0	100
NSW32	M32	32.5	41.5	100



### HDPE Sealing Washers

• ISO Metric range. Increased temperature range.

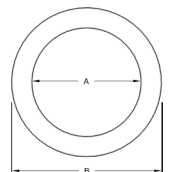
**Standards:** UL94 HB / DIN 8075

**Temperature Range:** -40°C to 100°C (static)

**Material:** High Density Polyethylene (HDPE DIN 8075)



Code	Gland Entry	ID (A)	OD (B)	Pack QTY
805516	M16	16.2	23.0	100
805520	M20	20.2	27.0	100
805525	M25	25.2	35.0	100
805532	M32	32.2	43.0	100
805540	M40	40.3	53.0	50
805550	M50	50.3	67.0	50
805563	M63	63.3	85.0	25
805575	M75	75.3	95.0	10



Ident & Wiring Term  
 Copper Lugs  
 Heatshrink Repair  
 Cable Joining  
 Junction Boxes  
 Flexible Conduit  
 Cable Glands  
 Gland Accs.  
 Cable Cleats  
 Earthing Lightning  
 MCC Cable  
 Cable Ties & Acc  
 Tooling & Cable Prep  
 Fixing & Security

### Fibre Sealing Washers

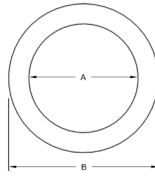
• ISO Metric range. Resistant to sea water corrosion, petroleum derivative, organic oil solvents, sunlight and abrasion

**Standards:** IEC 667 BS 6091

ASTM D710

**Temperature Range:** 0°C to 100°C

**Material:** Vulcanised fibre



Code	Gland Entry	ID (A)	OD (B)	Pack QTY
FW16	M16	16.5	25.0	100
FW20S	M20	20.3	28.5	100
FW20L	M20	20.3	35.0	100
FW25	M25	25.3	36.0	100
FW32	M32	32.3	42.5	100
FW40	M40	40.3	51.5	50
FW50	M50	50.3	64.5	50
FW63	M63	63.5	79.5	25
FW75	M75	75.5	90.0	10

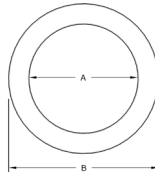
### PTFE Sealing Washers

PTFE Sealing Washers have very high temperature resistance and are resistant to nearly all known acids, alkalis, fuel and oils.

**Standards:** FDA compliant, UL94 V0

**Temperature Range:** -200°C to 260°C

**Material:** White PTFE (Teflon)



Code	Gland Entry	ID (A)	OD (B)	Pack QTY
PTFE16	M16	16.5	25.0	100
PTFE20	M20	20.5	30.0	100
PTFE25	M25	25.5	36.0	100
PTFE32	M32	32.5	42.5	100
PTFE40	M40	40.5	52.0	50
PTFE50	M50	50.5	64.5	50
PTFE63	M63	63.5	80.0	25
PTFE75	M75	75.5	95.0	10

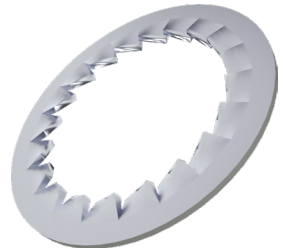
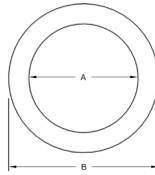
### Serrated Washers

• ISO Metric range, Anti-Vibration, Corrosion Resistant.

**Standards:** DIN 6798

**Temperature Range:** 250°C / 400°C Max

**Material:** BZP Steel or 316 (A4) Stainless Steel



- Bright Zinc Plated
- 316 Stainless Steel

Zinc Plated	Stainless Steel	Gland Entry	ID (A)	OD (B)	No of Teeth	Pack QTY
M16WSER	SSM16WSER	M16	17.3	25.5	16.0	100
M20WSER	SSM20WSER	M20	21.3	32.5	16.0	100
M25WSER	SSM25WSER	M25	25.3	37.5	16.0	100
M32WSER	SSM32WSER	M32	33.0	48.0	18.0	100
M40WSER	SSM40WSER	M40	41.0	60.0	20.0	50
M50WSER	SSM50WSER	M50	51.0	71.0	24.0	50
M63WSER	SSM63WSER	M63	64.0	87.0	30.0	25
M75WSER	SSM75WSER	M75	76.0	102.0	34.0	10

## EARTH TAGS

# Earth Tags

Earth tags provide an earth bond attachment for cable glands, similar to the ones found in conventional plugs. In the case of a fault, the earth tag safely channels the electricity towards the ground, keeping anyone coming into contact with the cable gland away from harm. Earth tags are standard for all cable gland set-ups, as specified in BS 6121 Part 5:1993 and EN50262:1999.

### Design

- Designed to work with ISO Metric, British Imperial and NPT Thread Forms.
- Fast and easy installation.
- Excellent chemical resistance with nickel plating and stainless steel.

### Material Selection

- **Brass** - CZ108 HH Brass or marine grade electroless nickel plated corrosion resistant finish.
- **Aluminium** - Aluminium alloy 6082 is a medium strength alloy with excellent corrosion resistance. It has the highest strength of the 6000 series alloys. Alloy 6082 is known as a structural alloy.
- **Stainless Steel** - Corrosion resistant 316 grade Stainless Steel.



### Aluminium Earth Tags

Aluminium for use with aluminium cable glands.

**Temperature Range:** -40°C to 100°C

**Material:** Aluminium 6082 HE30



Code	Gland Entry	ID (A)	OD (B)	Length (L2)	Bolt Hole	Pack QTY
ALET16	M16	16.3	25.4	49.3	M6	100
ALET20	M20	20.3	27.0	53.4	M6	100
ALET25	M25	25.3	35.0	59.4	M6	100
ALET32	M32	32.3	45.2	77.0	M12	100
ALET40	M40	40.3	53.7	88.7	M13	50
ALET50	M50	50.5	65.2	111.0	M13	50
ALET63	M63	63.3	82.6	128.6	M13	25
ALET75	M75	76.5	95.4	141.0	M13	10

### Brass Earth Tags

**Temperature Range:** -60°C to 200°C

**Material:** Brass BS 2874 CZ108 HH

**Finish:** Plain Brass or Nickel Plated



Metric

Brass	Nickel Plated Brass						
Code	Code	Gland Entry	ID (A)	OD (B)	Length (L2)	Bolt Hole	Pack QTY
ET16	NPET16	M16	16.3	25.4	49.3	M6	100
ET1	NPET1	M20	20.3	27.0	53.4	M6	100
ET2	NPET2	M25	25.3	35.0	59.4	M6	100
ET3	NPET3	M32	32.3	45.2	77.0	M12	100
ET4	NPET4	M40	40.3	53.7	88.7	M13	50
ET5	NPET5	M50	50.5	65.2	111.0	M13	50
ET6	NPET6	M63	63.3	82.6	128.6	M13	25
ET7	NPET7	M75	76.5	95.4	141.0	M13	10

NPT

Brass	Nickel Plated Brass						
Code	Code	Gland Entry	ID (A)	OD (B)	Length (L2)	Bolt Hole	Pack QTY
ET050NPT	NPET050NPT	½" NPT	21.3	27.7	53.4	M6	100
ET075NPT	NPET075NPT	¾" NPT	26.8	35.0	59.4	M6	100
ET100NPT	NPET100NPT	1" NPT	33.3	45.2	77.0	M12	100
ET125NPT	NPET125NPT	1¼" NPT	42.8	53.7	88.7	M12	100
ET150NPT	NPET150NPT	1½" NPT	48.9	65.2	111.0	M13	100
ET200NPT	NPET200NPT	2" NPT	62.0	82.6	128.6	M13	50
ET250NPT	NPET250NPT	2½" NPT	74.0	95.4	141.0	M13	50
ET300NPT	NPET300NPT	3" NPT	90.0	108.0	156.0	M13	25
ET350NPT	NPET350NPT	3½" NPT	102.2	127.0	190.0	M13	10

### Stainless Steel Earth Tags

**Temperature Range:** -100°C to 400°C

**Material:** 316 (A4) Stainless Steel

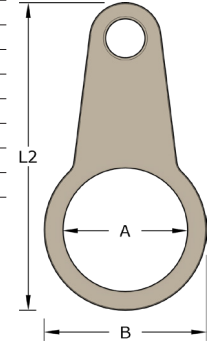


Metric

Code	Gland Entry	ID (A)	OD (B)	Length (L2)	Bolt Hole	Pack QTY
SSET16	M16	16.3	25.4	49.3	M6	100
SSET1	M20	20.3	27.0	53.4	M6	100
SSET2	M25	25.3	35.0	59.4	M6	100
SSET3	M32	32.3	45.2	77.0	M12	100
SSET4	M40	40.3	53.7	88.7	M13	50
SSET5	M50	50.5	65.2	111.0	M13	50
SSET6	M63	63.3	82.6	128.6	M13	25
SSET7	M75	76.5	95.4	141.0	M13	10

NPT

Code	Gland Entry	ID (A)	OD (B)	Length (L2)	Bolt Hole	Pack QTY
SSET050NPT	½" NPT	21.3	27.7	53.4	M6	100
SSET075NPT	¾" NPT	26.8	35.0	59.4	M6	100
SSET100NPT	1" NPT	33.3	45.2	77.0	M12	100
SSET125NPT	1¼" NPT	41.8	53.7	88.7	M12	100
SSET150NPT	1½" NPT	48.9	65.2	111.0	M13	100
SSET200NPT	2" NPT	62.0	82.6	128.6	M13	50
SSET250NPT	2½" NPT	74.0	95.4	141.0	M13	50
SSET300NPT	3" NPT	90.0	108.0	156.0	M13	25
SSET350NPT	3½" NPT	102.2	127.0	190.0	M13	10



Ident & Wiring Term  
Copper Lugs  
Heatshrink Repair  
Cable Joining  
Junction Boxes  
Flexible Conduit  
Cable Glands  
Gland Accs.  
Cable Cleats  
Earthing Lightning  
MCC Cable  
Cable Ties & Acc  
Tooling & Cable Prep  
Fixing & Security

Call the Remora sales team at **01226 352 000**

Challenge us - We find a solution

# Shrouds

Cable Gland Shrouds are used during installation to cover the cable gland and provide a neat professional finish. Remora manufactures an extensive range of cable gland shrouds to suit every application. Our shrouds are manufactured from PVC, Low Smoke PVC and LSZH Halogen Free Silicone material and available in a host of colours tailored to suit your requirements.

### Usage

Shrouds are widely recommended in the design of electrical systems and often specified in site installation policies. They provide a neat and professional finish to a cable termination or pass-through. They can also offer an additional layer of protection, keeping the gland body and installation surface free from the build-up of dust and dirt. In certain circumstances however the use of shrouds may not improve corrosion resistance and the use of shrouds will not necessarily improve the IP rating of the installation.

### Material Selection

**PVC** - PVC is a pliable, stable and long lasting plastic polymer with good electrical insulation properties. It is also highly resistance to acids, salts, bases and solvents. However in the event of a fire, the presence of chlorine in this material may make it unsuitable for use in enclosed or underground workspaces.

**Low Smoke PVC** - Similar to standard PVC however the inclusion of high-performance flame retardant plasticisers and low smoke additives increase safety by reducing smoke values and the release of toxic gases.

Flammability to UL94 V0 and Smoke Emission to ASTM D 2843-16.

**LSZH Halogen Free Silicone** - The gold standard in material selection for shrouds. Silicone offers low chemical reactivity, low thermal and electrical conductivity and high thermal stability; while most importantly, offering low toxicity. Making it ideal for use in critical safety installations and public spaces.

Ident & Wing Term  
Copper Lugs  
Heatshrink Repair  
Cable Jointing  
Junction Boxes  
Flexible Conduit  
Cable Glands  
Gland Accs.  
Cable Cleats  
Earthing Lightning  
MCC Cable  
Cable Ties & Acc  
Tooling & Cable Prep  
Fixing & Security

Remora



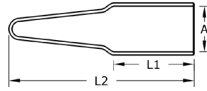
## CABLE GLAND SHROUDS

### PVC Shrouds

Remora PVC Shrouds are manufactured from PVC and are designed to reduce the accumulation of foreign substances and dust. Available in Standard and Low Smoke PVC material.

**Temperature Range:** -40°C to 65°C

**Material:** PVC / Low Smoke PVC



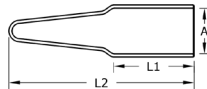
Standard Code	Low Smoke PVC Code	Reference Size	ID (A)	Parallel Length (L1)	Overall Length (L2)	Pack QTY
R0	R0LS	0 - M20s	24.0	60.0	130.0	100
SF0	SF0LS	0 - M20s	24.0	40.0	85.0	100
SF1	SF1LS	1 - M20	30.0	55.0	110.0	100
SF2	SF2LS	2 - M25	40.0	60.0	120.0	100
SF3	SF3LS	3 - M32	45.0	60.0	150.0	100
SF4	SF4LS	4 - M40	53.0	60.0	145.0	50
SF5	SF5LS	5 - M50	70.0	80.0	170.0	25
SF6	SF6LS	6 - M63	90.0	80.0	220.0	25
SF7	SF7LS	7 - M75	103.0	100.0	240.0	10
SF8	SF8LS	8 - M80	106.0	170.0	284.0	2
SF9	SF9LS	9 - M90	117.0	170.0	300.0	2
SF10	SF10LS	10 - M100	140.0	130.0	265.0	2

### Long Body PVC Shrouds

Remora Long Body Universal PVC Shrouds are designed to suit longer style cable glands.

**Temperature Range:** -40°C to 65°C

**Material:** PVC



Standard Code	Reference Size	Hawke Size	ID (A)	Parallel Length (L1)	Overall Length (L2)	Pack QTY
AR0	0 - M20s	0 - M20s	29.0	90.0	150.0	100
AR1	1 - M20	A - M20	33.0	90.0	150.0	100
AR2	2 - M25	B - M25	41.0	100.0	165.0	100
AR3	3 - M32	C - M32	53.0	100.0	170.0	100
AR4	4 - M40	C2 - M40	60.0	100.0	165.0	50
AR5	5 - M50	D - M50	70.0	130.0	220.0	25
AR6	6 - M63	E - M63	90.0	125.0	220.0	25



Call the Remora sales team at **01226 352 000**

Challenge us - We find a solution

Ident & Wiring Term  
Copper Lugs  
Heatshrink Repair  
Cable Joining  
Junction Boxes  
Flexible Conduit  
Cable Glands  
Gland Accs.  
Cable Cleats  
Earthing Lightning  
MCC Cable  
Cable Ties & Acc  
Tooling & Cable Prep  
Fixing & Security

# Accessories | GLAND SHROUDS

## CABLE GLAND SHROUDS

Ident & Wing Term  
Copper Lugs  
Heatshrink Repair  
Cable Joining  
Junction Boxes  
Flexible Conduit  
Cable Glands  
Gland Accs.  
Cable Cleats  
Earthing Lightning  
MICC Cable  
Cable Ties & Acc  
Tooling & Cable Prep  
Fixing & Security



MI 20 B

Prefix Size Colour: B = Black  
O = Orange  
R = Red  
W = White

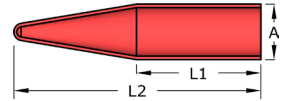
### PVC Mineral Gland Shrouds (MICC Glands)

Remora Mineral Shrouds are manufactured from PVC and are designed to cover the mineral cable glands, giving a neat and safe professional finish. Available in Standard and LS material.

**Temperature Range:** -40°C to 65°C

**Material:** PVC / LS PVC

**Colour:** Black, Orange, Red, White



Standard Code	Low Smoke PVC Code	Reference Size	Parallel ID (A)	Parallel Length (L1)	Overall Length (L2)	Pack QTY
MI20*	MI20*LS	M20	22.0	40.0	132.0	100
MI25*	MI25*LS	M25	26.0	61.0	146.0	100
MI32*	MI32*LS	M32	35.0	58.0	142.0	50



MI 20 B LST

Prefix Size Colour: B = Black  
O = Orange  
R = Red  
W = White

### LSZH Silicone Shrouds (MICC Glands)

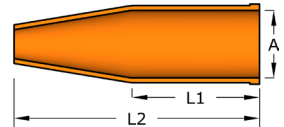
LSZH Silicone Shrouds are Low Smoke Zero Halogen shrouds which can be used to cover the cable glands, giving a neat and safe professional finish. Designed to suit MICC Cable Glands. Injection moulded from LSZH Silicone material.

**Protection:** Halogen Free

**Temperature Range:** -60°C to 250°C

**Material:** LSZH Silicone

**Colour:** Black, Orange, Red, White



Code	Reference Size	Parallel ID (A)	Parallel Length (L1)	Overall Length (L2)	Pack QTY
MI20*LST	M20	20.0	41.0	91.0	100
MI25*LST	M25	27.0	41.0	91.0	100
MI32*LST	M32	38.0	41.0	117.0	50

## LSZH Silicone Shrouds

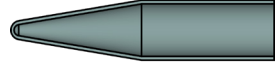
LSZH Silicone Shrouds are Low Smoke Zero Halogen shrouds. Designed to suit ArmaKit cable glands. Injection moulded from LSZH Silicone material.

**Protection:** Halogen Free

**Temperature Range:** -60°C to 250°C

**Material:** LSZH Silicone

**Colour:** Grey-Blue



Size	A2 (p.124)	BW (p.125)	CW (p.127)	RXT (p.129)
M16	LSZH-RABS025055			
M20SS	LSZH-RABS025055	LSZH-RABS022050	LSZH-RCEL024075	
M20S	LSZH-RABS025055	LSZH-RABS022050	LSZH-RCEL024075	LSZH-RCEL024075
M20	LSZH-RABS022050	LSZH-RCEL024075	LSZH-RCEL028080	LSZH-RCEL028080
M25	LSZH-RABS030058	LSZH-RABS030058	LSZH-RCEL033082	LSZH-RCEL033082
M32	LSZH-RCEL042104	LSZH-RABS035062	LSZH-EF042141	LSZH-RCEL042104
M40	LSZH-AF046116	LSZH-RABS049072	LSZH-RCEL051154	
M50S	LSZH-AF055130	LSZH-AF055130	LSZH-EF060170	
M50	LSZH-AF060130	LSZH-AF060130	LSZH-RCEL067145	
M63S	LSZH-AF075142	LSZH-AF068130	LSZH-EF075192	
M63	LSZH-AF075142	LSZH-AF075142	LSZH-EF080192	
M75S	LSZH-AF080142	LSZH-AF095165	LSZH-EF090220	
M75	LSZH-AF085165	LSZH-AF095165	LSZH-EF102240	



Ident & Wiring term  
Copper Lugs  
Heatshrink Repair  
Cable Joining  
Junction Boxes  
Flexible Conduit  
Cable Glands  
Gland Accs.  
Cable Cleats  
Earthing Lightning  
MCC Cable  
Cable Ties & Acc  
Tooling & Cable Prep  
Fixing & Security



Call the Remora sales team at **01226 352 000**

Challenge us - We find a solution