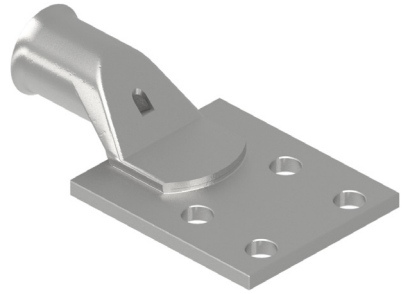


Copper Tube Lugs | TRANSFORMER / MECHANICAL

TRANSFORMER 4 HOLE FIXING TERMINAL

Transformer



Copper Transformer Lugs 600/1000V

Many transformer manufacturers produce equipment in accordance to E.A specification which means a 4 hole stud fixing arrangement for the connection of cables via copper lugs. Each stud hole will be 8mm in diameter. Sizes 95mm² to 300mm² are brazed palm type, 400mm² to 1000mm² are dimensionally the same as our standard lug with the exception of the palm fixing holes.

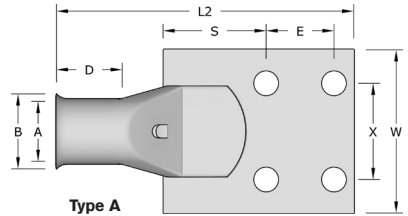
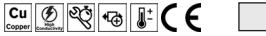
Remora Transformer Lugs are manufactured from precision drawn seamless copper tube to BS EN 12449:1999. All standard types in the range between 95mm² and 400mm² have bell mouth entries to ensure ease of entry, even with flexible conductors. All Copper Tube Lugs are tin plated to BS 1872 Part 2 for corrosion resistance and suitable for use up to 200°C.

Nickel plated lugs are available for high temperature applications up to 343°C.

Temperature Range: up to 200°C

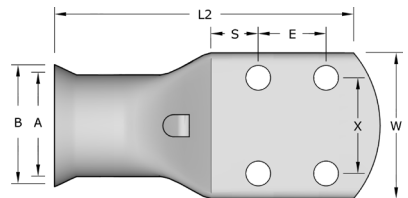
Material: BS EN 12449:1999

Plating: Tin BS 1872 Part 2



Type A

| Code | Cable Size mm ² | Stud Size | (A) | (B) | (W) | (E) | (X) | (D) | (L2) | Palm Thickness (S) | (S) |
|----------|----------------------------|-----------|------|------|------|------|------|------|-------|--------------------|------|
| 95TRANS | 95 | 8 | 13.5 | 19.0 | 60.0 | 25.0 | 35.0 | 24.0 | 114.0 | 6.0 | 32.0 |
| 120TRANS | 120 | 8 | 15.0 | 22.0 | 60.0 | 25.0 | 35.0 | 28.0 | 116.0 | 6.0 | 33.0 |
| 150TRANS | 150 | 8 | 16.5 | 24.0 | 60.0 | 25.0 | 35.0 | 26.0 | 105.0 | 6.0 | 34.0 |
| 185TRANS | 185 | 8 | 18.5 | 26.0 | 60.0 | 25.0 | 35.0 | 27.0 | 110.0 | 6.0 | 33.0 |
| 240TRANS | 240 | 8 | 21.0 | 30.0 | 60.0 | 25.0 | 35.0 | 29.0 | 114.0 | 6.0 | 33.0 |
| 300TRANS | 300 | 8 | 23.0 | 41.0 | 60.0 | 25.0 | 35.0 | 42.0 | 118.0 | 6.0 | 15.0 |



Type B

| Code | Cable Size mm ² | Stud Size | (A) | (B) | (W) | (E) | (X) | (D) | (L2) | Palm Thickness (S) | (S) |
|----------|----------------------------|-----------|------|------|------|------|------|------|-------|--------------------|------|
| 400TRANS | 400 | 8 | 27.0 | 37.0 | 60.0 | 25.0 | 35.0 | 41.0 | 135.0 | 6.0 | 34.0 |
| 500TRANS | 500 | 8 | 30.0 | 31.0 | 60.0 | 25.0 | 35.0 | 36.0 | 122.0 | 6.0 | 32.0 |
| 630TRANS | 630 | 8 | 33.8 | 47.0 | 63.0 | 25.0 | 35.0 | 50.0 | 125.0 | 10.0 | 12.0 |

All dimensions in mm except where stated