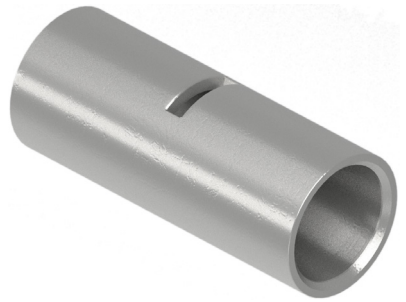


Copper Tube Lugs | BUTT SPLICE/SHEET TERMINAL

COPPER TUBE BUTT SPLICE

Butt Splices



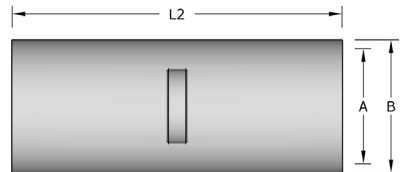
Copper Butt Splices (Through Crimp) 600/1000V

Copper Butt Splices are designed for jointing low voltage conductors. These tube splices feature bell mouth entry at both ends to ease the insertion of the conductor and central stop to ensure correct positioning. All Copper Tube Lugs are designed and manufactured to meet the performance requirements of BS EN61238-1-2003 and BS 4579. Nickel plated lugs are available for high temperature applications up to 343°C.

Temperature Range: up to 200°C

Material: Copper BS EN 61238-1-2003 and BS 4579 Part 1

Plating: Tin BS 1872 Part 2



Code	Cable Size mm ²	(A)	(B)	(L2)
10-T	10	4.7	7.0	25.0
16-T	16	5.6	8.0	30.0
25-T	25	7.0	9.0	35.0
35-T	35	8.2	10.2	40.0
50-T	50	9.5	12.0	44.0
70-T	70	11.5	14.2	44.0
95-T	95	13.5	16.4	46.0
120-T	120	15.0	19.0	50.0
150-T	150	16.5	21.0	54.0
185-T	185	18.5	22.5	56.0
240-T	240	21.0	25.0	58.0
300-T	300	23.0	28.0	96.0
400-T	400	27.0	32.0	110.0
500-T	500	30.0	38.1	118.0
630-T	630	33.8	44.0	127.0
800-T	800	38.0	49.0	150.0
1000-T	1000	42.5	53.0	150.0



Tooling