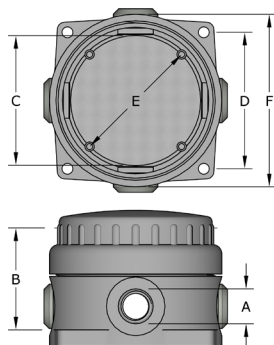


# Handifit Box

## IP68 GRP 4-Way Junction Box

The Handifit Box is an industrial junction box suitable for all surface applications. Available in five different sizes to cover small lighting wiring applications to project where greater space is required. Manufactured from impact, corrosion and UV resistant glass reinforced polyester compound, and this provides 1,2,3 or 4 way versatility. Screw on lid provides ease of installation and when locked with locking key prevents unauthorised tampering.



### Handifit Box

- No exposed metal parts
- Dust and water proof to IP68 when used with approved CCG glands
- One box offers 1, 2, 3 or 4 way versatility for reduced stock holding
- No drilling or tapping of cable entries required
- Mounting studs provided for DIN rail terminals
- Internal earth continuity ring to earth all gland entries
- Screw on lid provides ease of installation locked with a special key to prevent unauthorised tampering and ease of installation

**Protection:** IP66 / IP68

**Temperature Range:** -60°C to 110°C

**Material:** Impact, Corrosion and UV Resistant Glass Reinforced Polyester

**Colour:** Grey



Code	Reference Size	(A)	(B)	(C)	(D)	(E)	(F)
0650-0	0 - M20s	M20 x 1.5	52.0	71.0	79.0	65.0	100.0
065001	1 - M20	M20 x 1.5	58.0	88.0	92.0	80.0	118.0
065002	2 - M25	M25 x 1.5	67.0	108.0	107.0	98.0	140.0
065003	3 - M32	M32 x 1.5	105.0	166.0	167.0	150.0	206.0
065004*	4 - M40	M20,M25, M32 or M40 x 1.5	139.0	263.0	240.0	246.0	298.0

\*065004 available with M20, M25, M32 or M40 Entries

### Handifit Y Box

Through box assembly, IP66/67/68 weatherproof suitable for indoor / outdoor use, above and below ground. Ideal for industrial applications, outdoor lighting etc. Designed to join two steel wire armoured cables.

Code	Reference Size	(A)	(B)	(C)	(D)	(E)	(F)
0651-0	0 - M20s	M20 x 1.5	52.0	60.0	108.0	62.0	100.0
065101	1 - M20	M20 x 1.5	58.0	75.0	132.0	77.0	116.0
065102	2 - M25	M25 x 1.5	67.0	94.0	148.0	95.0	140.0
065103	3 - M32	M32 x 1.5	105.0	150.0	237.0	152.0	205.0

### Handifit Box Locking Keys

Anti-tamper locking keys.

Code	Reference Size	Box Code	Box Code
DIPS0	0 - M20s	0650-0	0651-0
DIPS1	1 - M20	065001	065101
DIPS2	2 - M25	065002	065102
DIPS3	3 - M32	065003	065103

