

HEAVY DUTY INDOOR - STEEL WIRE ARMOUR

## BWL ArmaKit

### Industrial Grade Low Smoke

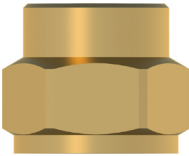
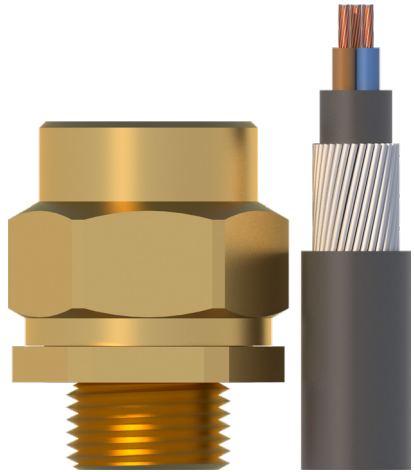
#### Heavy Duty Steel Wire Armour Cable Glands

#### Low Smoke and Acid Fume Emission

The ArmaKit® BWL Gland is a three-part brass cable gland designed for use with all Steel Wire Armoured PVC and LS cables. Heavier than the standard BW the BWL offers increased resistance to mechanical impact and has a longer body, providing greater protection to the armour wires from damage and impact. The three-part design of the BWL also prevents twisting of the armour wires during installation.

BW glands do not have an inner seal and as such provide minimal ingress protection against dust and liquid, they are only recommended for use in indoor, liquid and dust-free environments.

Cable retention and earth continuity is achieved via mechanical clamping of the cable armour.



#### ArmaKit® BW Gland Kits

- For indoor use.
- Three-part handling, increased cable safety.
- Heavy Duty, increased cable protection.
- Precision manufactured from high quality extrusion brass.
- Supplied in kits containing;
  - M20s-M32 2 glands, 2 locknuts, 2 earth tags, 2 LS shrouds

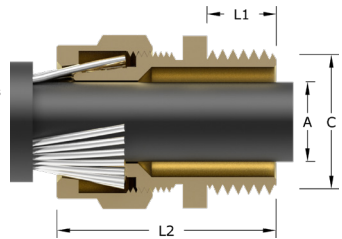
**Standards:** EN 60529  
BS 6121-1:2005

**Protection:** IP2X

**Temperature Range:** -80°C to 300°C

**Material (Gland):** Brass BS 2874 CZ121 Pb3

**Material (Shroud):** LS Polyvinyl-chloride



Code	Bedding OD		Cable OD		Armour Dia	Entry Thread		Gland		Box QTY	Carton QTY
	Max (A)	Max	Min	Max		Size (C)	Length (L1)	Length (L2)	A/F		
BWLK2/M20/M20sLS	11.8	15.8	0.9	1.25	M20 x 1.5	10.0	36.0	24.0	26.6	10	50
BWLK2/M20/M20LS	13.8	20.8	0.9	1.25	M20 x 1.5	10.0	38.0	30.0	33.3	8	50
BWLK2/M25/M25LS	19.8	27.5	1.25	1.60	M25 x 1.5	10.0	40.0	38.0	42.2	5	50
BWLK2/M32/M32LS	26.4	33.5	1.6	2.00	M32 x 1.5	10.0	43.0	46.0	51.0	5	30



Supplied in kits;

- M16-M32
  - 2 glands
  - 2 locknuts
  - 2 shrouds
  - 2 earthtags