

## METRIC BRASS COUPLERS

### Brass Couplers

- ISO Metric range.
- Application; Machines, Devices, Housings, Panels

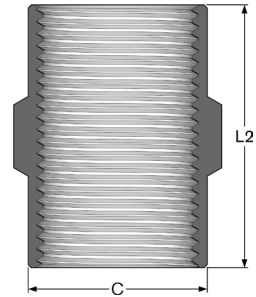
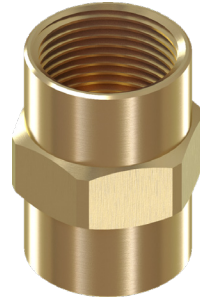
**Standards:** EN 50262

**Temperature Range:** -60°C to 200°C

**Material:** Brass BS 2874 CZ121 Pb3



| Code    | Entry Thread | Length (L2) | Diameter (C) |
|---------|--------------|-------------|--------------|
| CM20M20 | M20 x 1.5    | 33.0        | 22.5         |
| CM25M25 | M25 x 1.5    | 34.0        | 27.0         |
| CM32M32 | M32 x 1.5    | 38.0        | 34.2         |
| CM40M40 | M40 x 1.5    | 40.0        | 42.6         |
| CM50M50 | M50 x 1.5    | 41.0        | 53.0         |
| CM63M63 | M63 x 1.5    | 43.0        | 66.4         |
| CM75M75 | M75 x 1.5    | 45.0        | 78.8         |



### Brass Locknuts

- ISO Metric range.
- Application; Machines, Devices, Housings, Panels

**Temperature Range:** -60°C to 200°C

**Material:** Brass BS 2874 CZ121 Pb3

**Finish:** Plain Brass



#### Unplated Brass

| Code   | Entry Thread | A/F   | A/C   | Thickness | Pack QTY |
|--------|--------------|-------|-------|-----------|----------|
| UBLN12 | M12 x 1.5    | 15.0  | 16.5  | 3.0       | 100      |
| UBLN16 | M16 x 1.5    | 20.0  | 22.0  | 3.5       | 100      |
| UBLN1  | M20 x 1.5    | 24.0  | 26.5  | 4.0       | 100      |
| UBLN2  | M25 x 1.5    | 30.0  | 33.0  | 3.5       | 100      |
| UBLN3  | M32 x 1.5    | 40.0  | 44.0  | 4.0       | 100      |
| UBLN4  | M40 x 1.5    | 46.0  | 50.0  | 4.5       | 50       |
| UBLN5  | M50 x 1.5    | 65.0  | 72.0  | 5.0       | 25       |
| UBLN6  | M63 x 1.5    | 80.0  | 88.0  | 6.5       | 25       |
| UBLN7  | M75 x 1.5    | 90.0  | 98.0  | 6.5       | 10       |
| UBLN8  | M80 x 2.0    | 97.0  | 109.0 | 8.0       | 2        |
| UBLN9  | M90 x 2.0    | 112.0 | 125.0 | 10.0      | 2        |
| UBLN10 | M100 x 2.0   | 115.0 | 131.5 | 7.0       | 2        |

