

Fibre Sealing Washers

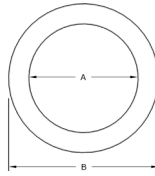
• ISO Metric range. Resistant to sea water corrosion, petroleum derivative, organic oil solvents, sunlight and abrasion

Standards: IEC 667 BS 6091

ASTM D710

Temperature Range: 0°C to 100°C

Material: Vulcanised fibre



Code	Gland Entry	ID (A)	OD (B)	Pack QTY
FW16	M16	16.5	25.0	100
FW20S	M20	20.3	28.5	100
FW20L	M20	20.3	35.0	100
FW25	M25	25.3	36.0	100
FW32	M32	32.3	42.5	100
FW40	M40	40.3	51.5	50
FW50	M50	50.3	64.5	50
FW63	M63	63.5	79.5	25
FW75	M75	75.5	90.0	10

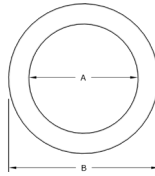
PTFE Sealing Washers

PTFE Sealing Washers have very high temperature resistance and are resistant to nearly all known acids, alkalis, fuel and oils.

Standards: FDA compliant, UL94 V0

Temperature Range: -200°C to 260°C

Material: White PTFE (Teflon)



Code	Gland Entry	ID (A)	OD (B)	Pack QTY
PTFE16	M16	16.5	25.0	100
PTFE20	M20	20.5	30.0	100
PTFE25	M25	25.5	36.0	100
PTFE32	M32	32.5	42.5	100
PTFE40	M40	40.5	52.0	50
PTFE50	M50	50.5	64.5	50
PTFE63	M63	63.5	80.0	25
PTFE75	M75	75.5	95.0	10

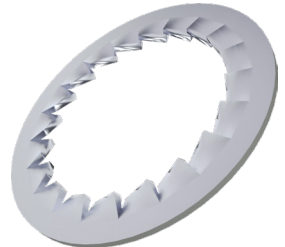
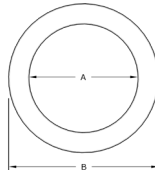
Serrated Washers

• ISO Metric range, Anti-Vibration, Corrosion Resistant.

Standards: DIN 6798

Temperature Range: 250°C / 400°C Max

Material: BZP Steel or 316 (A4) Stainless Steel



- Bright Zinc Plated
- 316 Stainless Steel

Zinc Plated	Stainless Steel	Gland Entry	ID (A)	OD (B)	No of Teeth	Pack QTY
M16WSER	SSM16WSER	M16	17.3	25.5	16.0	100
M20WSER	SSM20WSER	M20	21.3	32.5	16.0	100
M25WSER	SSM25WSER	M25	25.3	37.5	16.0	100
M32WSER	SSM32WSER	M32	33.0	48.0	18.0	100
M40WSER	SSM40WSER	M40	41.0	60.0	20.0	50
M50WSER	SSM50WSER	M50	51.0	71.0	24.0	50
M63WSER	SSM63WSER	M63	64.0	87.0	30.0	25
M75WSER	SSM75WSER	M75	76.0	102.0	34.0	10