

Cable Jointing

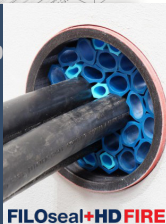
Cable Jointing

The jointing of cables is a necessity that inevitably occurs in all areas of the electrical industry. The paramount factors are that this is done safely and efficiently, whether this is in LV, MV, or HV installations this remains to be true. Our comprehensive range of LV jointing products ensures that all standards are met and you can be safe in the knowledge you can joint it and forget it.

Resin Joint Kits



Duct Sealing



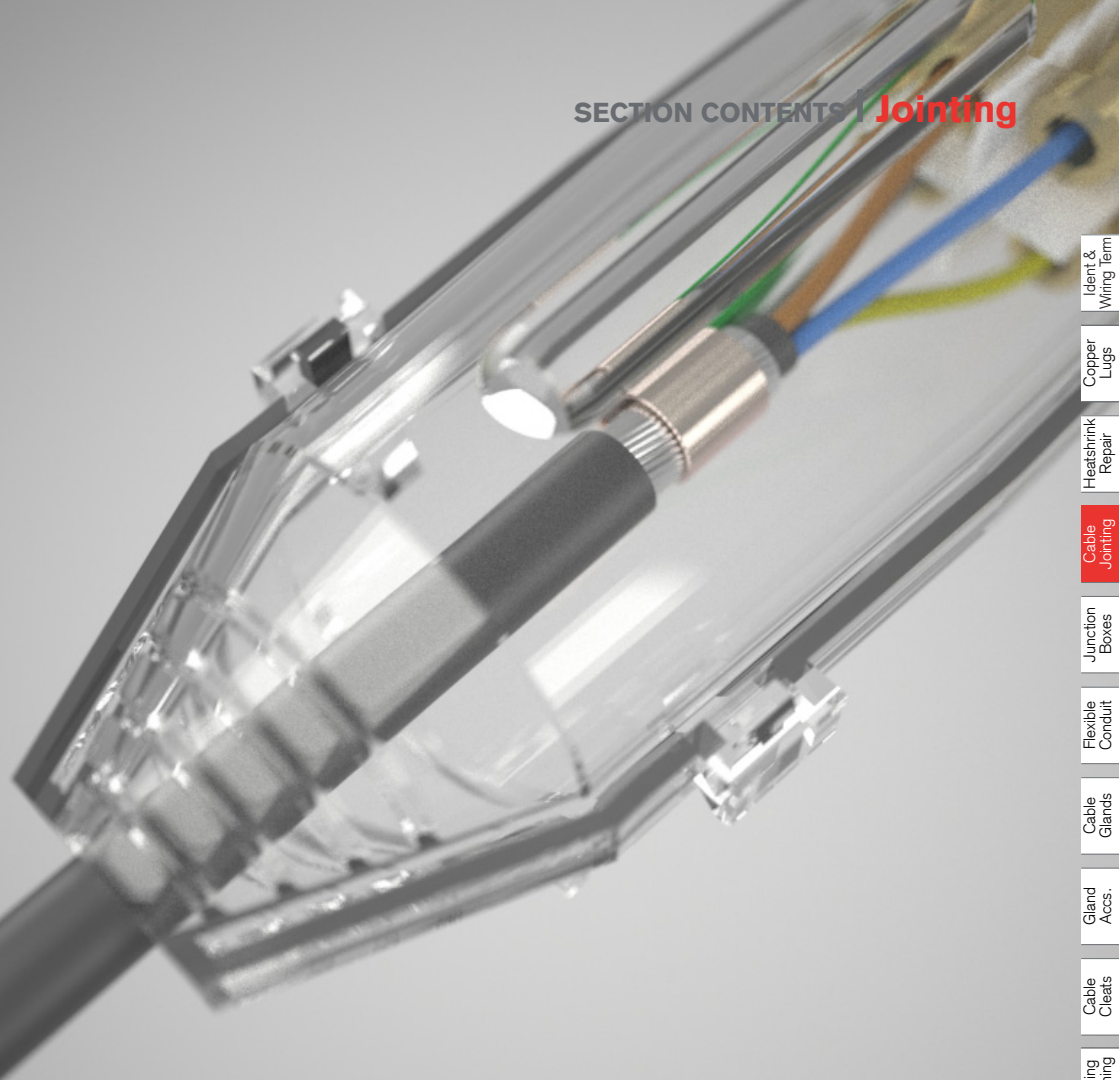
Cold Shrink



Resin Joints: Our range of cable jointing solutions and systems encapsulate a wide number of possibilities within the LV and MV applications. Resin Straight and Resin Branch jointing systems are offered for LV applications of up to 1000V, accommodating upto 400mm² cable in straight and 70mm² in branch kits. The snap lock shells and easy pour two-part resin gives a quick, clean and efficient jointing solution.

Duct Sealing Systems: If you are running ducting to carry a configuration of cables or pipes, why not use our FiloSeal+HD or FiloSeal+HD FIRE product? By utilising the hexagonal shaped tubes to build up a honeycomb structure around the components contained in the duct means that a mechanical support is achieved. Then applying the sealant creates a flexible elastomer mass, after curing via humidity alone gives an effective seal and bond. The seal stays soft to the touch in order to re-enter and pass additional cables or pipes into the duct in the future.

Cold Shrink Systems: Cold Shrink systems are the efficient, easy alternative to Heat Shrink. Are you fed up with lugging all that extra equipment around site such as heat guns and gas bottles and seeking the appropriate permits to carry out Heat Shrink work? Then go Cold! Remora have the solution for you whether it be End Caps, Joints or Abandonment kits. The elastomeric properties that exist in Cold Shrink products, means that the tube acts like an elastic band being stretched over the termination or joint, then exercising a forcible inward motion applying a continuous squeezing effect onto the cable.



Ident & Wiring Term

Copper Lugs

Heatshrink Repair

Cable Joining

Junction Boxes

Flexible Conduit

Cable Glands

Gland Accs.

Cable Cleats

Earthing Lightning

MCC Cable

Cable Ties & Acc

Tooling & Cable Prep

Fixing & Security

Cable Joints & Connectors P. 58 | 61



Lever Terminals & Cable Socks P. 62 | 63



In-line IP68 Connectors P. 64 | 65



Cable Duct Sealing Systems P. 66 | 67



Cold Shrink Systems P. 68 | 69

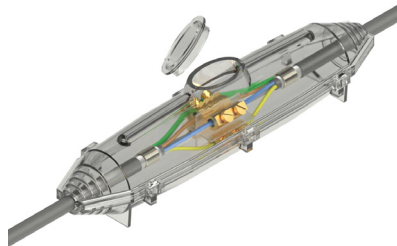


CABLE JOINTING - STRAIGHT

Straight Resin

RCM Straight Joint 600/1000v

The RCM Range of Resin Joints are designed for 600/1000v cables with stranded copper or solid aluminium conductors up to 400mm² PVC, XLPE or EPR insulated, PVC sheathed single wire armoured, aluminium strip armoured or unarmoured cables. The joints have been specifically designed to offer the user quick, clean & efficient jointing featuring snap lock shells & easy-pour two-part resin.



RCM Straight Joints

The RCM range of Resin Joints are designed to be used with 600/1000v cables with stranded copper or solid aluminium conductors up to 400mm². Steel Wire Armoured, Aluminium Strip Armoured or Unarmoured Cables with either PVC, XLPE or EPR insulated sleeving. The joints have been designed to offer the user quick, clean and efficient jointing featuring snap-lock shells and easy-pour two-part resin.

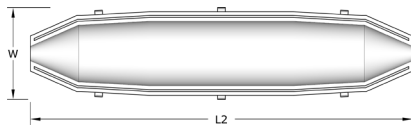
- Designed for UK armoured cables to allow plenty of room to work

Material: Hydrolysis resistant polyurethane resin

Voltage: 600/1000 volts (3.3kV with upgrade)

Temperature Range: -10°C to 120°C

Standards: DIN EN 50393:2006-11 (VDE 0278-393)



+ Connectors	Max Cable Size					Resin
Code	2, 3, 4 core (mm ²)	Cable Entry	Length (L2)	Width (W)	Shell Style	Content (ml)
RCM0+C	1.5 - 6.0	5 - 20	200.0	35.0	Injection Mould - Snaplock	200
RCM1+C	10.0 - 16.0	8 - 30	250.0	45.0	Injection Mould - Snaplock	360
RCM2+C	16.0 - 25.0	10 - 34	320.0	60.0	Injection Mould - Snaplock	800
RCM2.5+C	35.0 - 70.0	26 - 53	355.0	72.0	Injection Mould - Snaplock	1160
RCM3+C	70.0 - 95.0	30 - 48	450.0	75.0	Injection Mould - Snaplock	1360
RCM4+C	95.0 - 120.0	37 - 67	547.0	108.0	Injection Mould - Snaplock	4070
RCS5+C	150.0 - 185.0	48 - 88	700.0	140.0	Vacuum Formed	7560
RCS6+C	240.0 - 300.0	48 - 88	800.0	160.0	Vacuum Formed	10080
RCS7+C	400.0	70 - 105	1345.0	155.0	Vacuum Formed	17600

Quick Selection Chart - Armoured Cable

No. of Cores	Cable Size mm ²																	
	1.5	2.5	4	6	10	16	25	35	50	70	95	120	150	185	240	300	400	
2	RCM0			RCM1			RCM2			RCM3			RCM4			RCS6		RCS7
3	RCM0			RCM1			RCM2			RCM2.5			RCM4			RCS5	RCS6	RCS7
4	RCM0			RCM1			RCM2			RCM2.5			RCM4			RCS5	RCS6	RCS7
5	RCM0		RCM1		RCM2		RCM3		RCM4		RCS5		RCS6		RCS7			
6	RCM1																	
7	RCM1																	
8	RCM1																	
10	RCM2																	
12	RCM3																	
16	RCM3																	

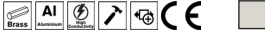
All dimensions in mm except where stated

Straight Mechanical Connectors

Straight Mechanical Connectors for use with RCM Resin Joints.

- Suitable for connecting conductors in straight joints
- Suitable for solid strand conductors
- Brass for sizes 1.5-120mm².

Material: Nickel Plated Brass



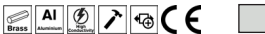
Code	Description	Cable Range mm ²	Pack QTY
RMC1/0	Brass tunnel connector	1.5 - 6.0	4
RMC1/1	Brass tunnel connector	6.0 - 16.0	4
RMC1/2	Brass tunnel connector	10.0 - 35.0	4
RMC1/3	Brass tunnel connector	16.0 - 70.0	4
RMC1/5	Brass tunnel connector	50.0 - 95.0	4



Straight Mechanical Connectors for use with RCM Resin Joints.

- Jointing of stranded aluminium or copper cores in applications up to 11kV
- Shear bolts to ensure a consistent & reliable connection
- Supplied with Brass gauze to improve electrical stability when joining copper cables
- Aluminium shear-head bolts for sizes 25-300mm²

Material: Aluminium



Code	Length	Width	Height	Cable Range mm ²
UM95	86.0	26.0	24.5	25.0 - 95.0
UM185	108.0	35.0	33.0	35.0 - 185.0
UM300	120.0	41.0	40.0	70.0 - 300.0



Two-Part Jointing Resin

Easy-pour Polyurethane resin is specially designed for cable joints up to 1kV. It has good anti corrosion properties and shows excellent adhesion to metals, ceramics, and many different plastics.

Material: Hydrolysis resistant polyurethane resin

Voltage: 1kV (1000v)

Standards: IEC 60455-3-8:2013



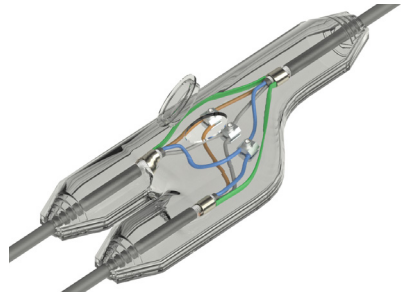
Code	Content ml	Colour
PR360	360	Black
PR800	800	Black
PR1800	1800	Black



Branch Resin

RCB Branch Joint 600/1000v

The RCB Range of Resin Joints are designed for 600/1000v cables with stranded copper or solid aluminium conductors up to 70mm² PVC, XLPE or EPR insulated, PVC sheathed single wire armoured, aluminium strip armoured or unarmoured. The joints have been specifically designed to join three equal or smaller sized cables. They offer quick, clean & efficient jointing with snap lock shells & easy-pour two-part resin.



RCB Branch Joints

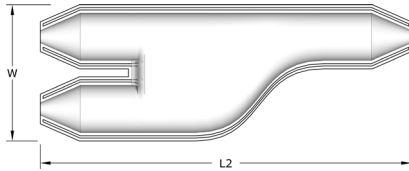
The RCB range of Resin Joints are designed to be used with 600/1000v cables with stranded copper or solid aluminium conductors up to 70mm². Steel Wire Armoured, Aluminium Strip Armoured or Unarmoured Cables with either PVC, XLPE or EPR insulated sleeving. The joints have been designed to offer the user quick, clean and efficient jointing featuring snap-lock shells and easy-pour two-part resin.

- Designed for UK armoured cables to allow plenty of room to work

Material: Hydrolysis resistant polyurethane resin

Voltage: 1kV (1000v)

Standards: DIN EN 50393:2006-11 (VDE 0278-393:2006-11)



+ Connectors	Max Cable Size				Shell Style	Resin Content (ml)
	Code	2, 3, 4 core (mm ²)	Cable Entry	Length (L2)		
RCB6+C	1.5 - 6.0	12.0 - 24.0	220.0	76.0	Injection Mould - Snaplock	470
RCB16+C	6.0 - 16.0	9.0 - 25.0	335.0	120.0	Injection Mould - Snaplock	1270
RCB35+C	25.0 - 35.0	8.0 - 30.0	420.0	135.0	Injection Mould - Snaplock	2000
RCB70+C	50.0 - 70.0	15.0 - 40.0	485.0	120.0	Vacuum Formed	3600

Quick Selection Chart - Armoured Cable

No. of Cores	Cable Size mm ²													
	1.5	2.5	4	6	10	16	25	35	50	70	95	120	150	185
1	RCB6			RCB16					RCB35		RCB70			
2	RCB6			RCB16				RCB35		RCB70				
3	RCB6			RCB16				RCB35		RCB70				
4	RCB6			RCB16				RCB35		RCB70				
5	RCB16					RCB35		RCB70						

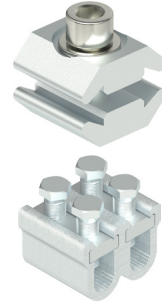
Branch Mechanical Connectors

Branch Mechanical Connectors for use with RCB Resin Joints.
For use with cables up to 95mm².

Material: Aluminium Alloy



Code	Length	Width	Height	Cable Range mm ²
P1	23.0	20.0	25.0	< 35.0
WM1	40.0	41.0	34.0	16.0 - 95.0



Two-Part Jointing Resin

Easy-pour Polyurethane resin is specially designed for cable joints up to 1kV. It has good anti corrosion properties and shows excellent adhesion to metals, ceramics, and many different plastics.

Material: Hydrolysis resistant polyurethane resin

Voltage: 1kV (1000v)

Standards: IEC 60455-3-8:2013



Code	Content ml	Colour
PR360	360	Black
PR800	800	Black
PR1800	1800	Black



Joining | CABLE JOINTS & CONNECTORS

CONNECTORS & TERMINALS

Connector Strips - 12 Way

Package contains 10x Electrical Connector Strips (12 Ways per strip)
Easy-Cut, Captive Screws & Raised for Easy Wiring. Screw holes between each block for quick and secure mounting. Each terminal block has the Current and Voltage rating imprinted below the terminal strip.

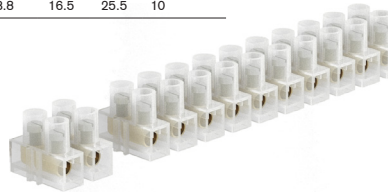
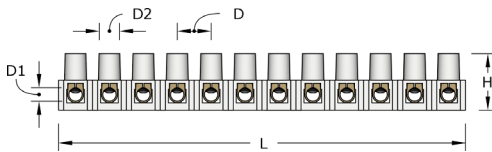
Temperature Range: -15 to +80°C

Material: Polyethylene (PE) Housing / Galvanised Steel Screws / Brass Housing

Colour: Natural



Code	Sector mm ²	Rated Current	Rated Voltage	(L)	Width (W)	Dia 1	Dia 2 (D)	(H)	Pack QTY
12WSC3A	4.0	3 Amp	380V	93.0	16.8	2.8	2.3	7.8	10
12WSC5A	6.0	5 Amp	380V	115.0	18.8	3.3	2.6	10.0	10
12WSC10A	10.0	10 Amp	400V	129.0	20.7	4.3	2.8	11.0	10
12WSC15A	12.0	15 Amp	400V	137.0	22.5	4.5	2.8	12.0	10
12WSC30A	16.0	30 Amp	400V	165.0	25.5	5.5	3.0	14.0	10
12WSC60A	25.0	60 Amp	400V	187.0	31.2	6.5	3.8	16.5	10



Lever Push-Fit Terminal Blocks

This innovative solution has been developed to offer faster termination of cables into the terminal block safely and consistently. Transparent case provides a clear view to see connections. Ergonomic easy-open levers. Speeds up installation of fine stranded conductors.

• 2, 3 and 5 way options

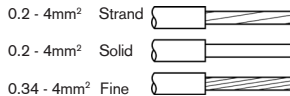
• Test slots for continuity and voltage testing.

Rating: 32A / 450V

Temperature: 85°C

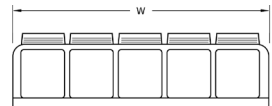
Material: Polycarbonate UL94 V2

Standards: IEC EN 60998-1, 60998-2-2



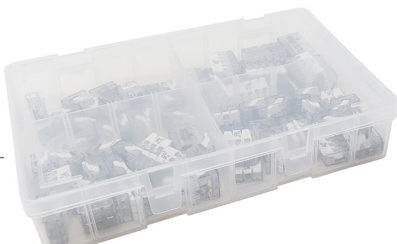
Code	Conductors	Rating	Length (L)	Width (W)	Height (H)	Pack QTY
VID-UC-02	2	32A / 450V	18.6	13.1	10.5	100
VID-UC-03	3	32A / 450V	18.6	18.7	10.5	50
VID-UC-05	5	32A / 450V	18.6	29.9	10.5	25

Code	Description	Pack QTY
VID-BK	75 Piece Lever Terminal Box Kit	1



Kit Contents

- VID-UC-02 x 20
- VID-UC-03 x 40
- VID-UC-05 x 15





Single Eye Cable Grips (Cable Socks)

Designed to fit the typical European range of cables, and with a longer lattice length, Ideal for pulling light to medium loads. Typical application - 'standard pull' of single or group of cables, where additional support is unnecessary, or if used in conjunction with other cable grips.

- Available in galvanised steel or stainless steel
- Specifically designed for metric sized cable
- Suitable for underground installations
- Fits easily onto electrical cables

Material: Galvanised Steel
Max Breaking Load: 760-7100Kgs



Code	Range	Lattice Length	Overall Length	Approx. Break Load (kg)
CSOCK/6-13	6 - 13	230	305	760
CSOCK/13-19	13 - 19	355	430	1,015
CSOCK/19-25	19 - 25	405	510	2,540
CSOCK/25-38	25 - 38	455	610	3,555
CSOCK/38-50	38 - 50	535	735	5,080
CSOCK/50-63	50 - 63	610	865	5,080
CSOCK/63-89	63 - 89	685	990	6,095
CSOCK/89-115	89 - 115	685	990	7,110

• also available in Double Eye and Stainless Steel to order



IN-LINE CONNECTORS

IP68 In-Line

450V In-Line Multi Pole Connectors

Our In-Line cable connectors are a fast and effective means of jointing 2 lengths of non armoured cable. Ideal for locations where a junction box can't be used but a high ingress protection is still required. Available in 3 and 4 pole in the standard range. Having brightly coloured seals/gaskets to both plug and socket parts of the connector, it is easy to see if they are in place ensuring IP68 ingress protection (3 bar) when connected. Meaning safe operation even when submerged in water.



3 Pole

4 Pole

IP68 In-Line Cable Connectors

Can be used to extend and join electrical cables between 5-12mm (outside cable diameter). High quality construction makes it ideal for use outdoor in heavy rain or under bright sunlight. Can even be placed underground.

- 3 or 4 Pole
- Waterproof - Certified IP68 at 5 Bar
- Water and Dust proof. UV Resistant and Flame Retardant
- Quick and Secure screw terminal connection guarantees long lasting and reliable continuity
- Fully IEC and CE certified
- IEC60998-2-1:2004, IEC62444:2013, IEC60529:1991+A1:2000+A2:2013

IP Rating: IP68 (5 bar)

Voltage: 400V

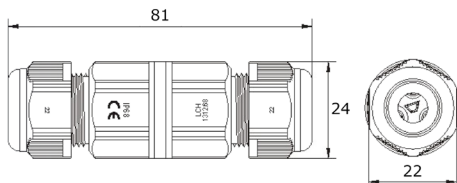
Current: 16A

Temperature: -35°C to 85°C

Material: Nylon PA66



Code	Poles	Current	Cable OD	Length	A/F	Width	Pack QTY
LCH1312.68-3P	3	16A	5 - 12	81	22	24	2
LCH1312.68-4P	4	16A	5 - 12	81	22	24	2





IP68 In-Line Disconnecting 450V In-Line Multi Pole Connectors

Our In-Line cable connectors are a fast and effective means of joining 2 lengths of non armoured cable. Ideal for locations where a junction box can't be used but a high ingress protection is still required. Available in 3, 4 and 5 pole in the disconnecting range. Having brightly coloured seals/gaskets to both plug and socket parts of the connector, it is easy to see if they are in place ensuring IP68 ingress protection (3 bar) when connected. Meaning safe operation even when submerged in water.

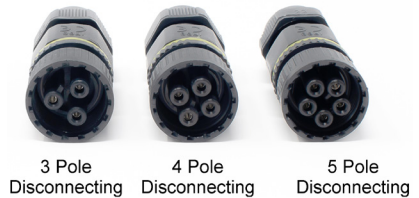
The disconnecting range allows safe separation of the two opposing parts of the connector, without the need to remove power. When separated the two parts of the disconnecting connector offer IP2X finger protection from the live terminals inside.

IP68 In-Line Cable Connectors - Disconnecting

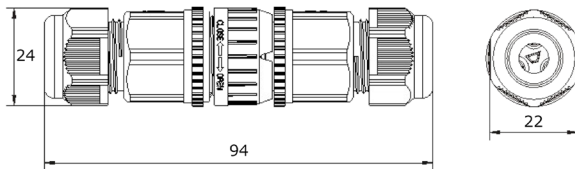
Can be used to extend and join electrical cables between 5-12mm (outside cable diameter). High quality construction makes it ideal for use outdoor in heavy rain or under bright sunlight. Can even be placed underground.

- Disconnecting
- 3, 4 or 5 Pole
- Waterproof - Certified IP68 at 5 Bar
- Water and Dust proof. UV Resistant and Flame Retardant
- Quick and Secure
- Screw terminal connection guarantees long lasting and reliable continuity
- Fully IEC and CE certified
- IEC60998-2-1:2004, IEC62444:2013, IEC60529:1991+A1:2000+A2:2013

IP Rating: IP68 (5 bar)
Voltage: 400V
Current: 16A
Temperature: -35°C to 85°C
Material: Nylon PA66



Code	Poles	Current	Cable OD	Length	A/F	Width	Pack QTY
LCH1312.68C-3P	3	16A	5 - 12	94	22	24	2
LCH1312.68C-4P	4	16A	5 - 12	94	22	24	2
LCH1312.68C-5P	5	16A	5 - 12	94	22	24	2



Call the Remora sales team at **01226 352 000**

Challenge us - We find a solution

Ident. & Wiring Term
Copper Lugs
Heatshrink Repair
Cable Jointing
Junction Boxes
Flexible Conduit
Cable Glands
Gland Accs.
Cable Cleats
Earthing/Lighting
MCC Cable
Cable Ties & Acc
Tooling & Cable Prep
Fixing & Security

Joining | CABLE DUCT SEALING SYSTEM

RE-ENTERABLE CABLE DUCT SEALING SYSTEM

FiloSeal+HD

Re-enterable Duct Sealing System

FiloSeal+HD provides a strong support system using the hexagonal tubes which builds up like a honeycomb structure. FiloSeal+HD is suitable for sealing any cable configuration or pipes contained in one duct and also allows easy re-entry of the seal to add or remove cables or pipes as required. The duct sealing system FiloSeal+HD uses our MD+ sealant which is easily applied from a skeleton gun. The high quality, one component, flexible sealant "MD+" is based on a Silicone compound that cures with air (Humidity). After application and full curing the thixotropic MD+ forms a plastic elastomer mass with special qualities effectively sealing and bonding, while providing a high level of durability.



Re-Enterable Duct Sealing System

- Flexible, one component, adhesive and sealing compound
- High levels of Gas and Water tightness
- Resistant against Water, Alkaline, Chemical agents
- Resistant to Rats
- Resistant to Hydrogen Sulphide / Methane and many other Gases (NedLab)
- Non corrosive
- Shock absorbing
- Non toxic, neutral and almost odourless
- Complies with ATEX regulations
- Suitable for any shaped duct / bore hole / opening
- Quick and easy installation
- Seals all known materials, PVC & PE sheathed cables, PILC, (HD) PE pipes
- Suitable for renovations, can be installed retrospectively

Density: 1.2 gr/cm³

Pressure: up to 2 bar

Pulling Force: 100kg

Flow: <2mm ISO 7390

Colour: Red-Brown

Skin Over Time: +-15minutes

Curing Time: 3mm / 24 hours

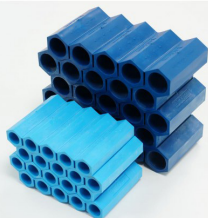
Hardness: 30 shore A - DIN 53505

Elongation: 100% - DIN53504

Tensile Strength: 0.8 N/mm² - DIN53504

Operating Temp: +5°C to 40°C

Temperature Resistance: -40°C to 120°C



Code	Description	Max Duct Diameter mm	Max Cable Diameter in Duct	Pressure Resistance
FS+HD-110	FiloSeal+HD 110mm	Max 110.0	Ø 80 Max	Upto 2 bar
FS+HD-160	FiloSeal+HD 160mm	Max 160.0	Ø 130 Max	Upto 2 bar



FiloSeal+ Duct Sealing System

Re-Enterable Duct Sealing System

All the benefits of the FiloSeal+ with the exception of reduced max pressure resistance of 1 bar and minimal pull resistance.



Code	Description	Max Duct Diameter mm	Max Cable Diameter in Duct	Pressure Resistance
FS+125	FiloSeal+ 125mm	Max 125.0	Ø 95 Max	Upto 1 bar
FS+200	FiloSeal+ 200mm	Max 200.0	Ø 160 Max	Upto 1 bar

FIRE RESISTANT RE-ENTERABLE CABLE DUCT SEALING SYSTEM



FiloSeal+HD Fire

Re-enterable Duct Sealing System

FiloSeal+HD FIRE provides a strong support system using the fire resistant hexagonal blocks made of our specially formulated material called 'Formite' which builds up like a honeycomb structure. FiloSeal+HD FIRE is suitable for sealing empty or any cable configuration or pipes contained in one duct and also allows easy re-entry of the seal to add or remove cables or pipes as required.

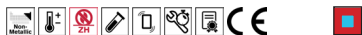
FiloSeal+HD FIRE is very easy to apply regardless of the type of cable scenario in the cable ducts as it uses strong, but flexible hexagonal blocks to support the cable and provide a strong backing for the seal. The unique design of the hexagonal blocks makes positioning and separation of the cables very simple while also providing a strong backing for the MD+ to be applied on.

Re-Enterable Duct Sealing System

- Up to 4 hours fire resistance in transit frames (single side)
- Up to 4 hours fire resistance in ducts
- Tested to BS EN1366-3 2009
- Tested to London Underground - LUL S1085
- WIMES Compliant (3.02 2013 6.4.3.2 b)
- Kits are complete with backing and mastic to fill an empty duct of the kit size
- High levels of Gas and Water tightness
- Resistant against Water, Alkaline, Chemical agents
- Resistant to Rats and Termites
- Resistant to Hydrogen Sulphide / Methane and many other Gases (NedLab)
- Non corrosive, Solvent free, Shock absorbing, Non toxic and almost odourless
- Complies with ATEX regulations
- Suitable for any shaped duct / bore hole / opening
- Quick and easy installation
- Seals all known materials, PVC & PE sheathed cables, PILC, (HD) PE pipes
- Suitable for renovations, can be installed retrospectively

Density: 1.2 gr/cm³
Pressure: up to 2 bar
Pulling Force: 100kg
Flow: <2mm ISO 7390
Colour: Red-Brown
Skin Over Time: +15minutes

Curing Time: 3mm / 24 hours
Hardness: 30 shore A - DIN 53505
Elongation: 100% - DIN53504
Tensile Strength: 0.8 N/mm² - DIN53504
Operating Temp: +5°C to 40°C
Temperature Resistance: -40°C to 120°C



Code	Description	Max Duct Diameter mm	Max Cable Diameter in Duct	Pressure Resistance
FS+HD-110-FIRE	FS+HD FIRE 110mm	Max 110.0	Ø 80 Max	Upto 2 bar
FS+HD-160-FIRE	FS+HD FIRE 160mm	Max 160.0	Ø 130 Max	Upto 2 bar

MD+ Sealant

MD+ is an engineered fire resistant elastic one-component sealant, suitable for sealing penetrations against, gas & water & when used in conjunction with FiloSeal+HD FIRE, you can achieve a fire-resistant seal up to 4 hours. Flexible, one component, adhesive and sealing compound. Supplied as individual cartridge (310ml)



Code	Description
MD+	MD+ Duct Sealant - Gas & Water Tight - Fire Retardant 310ml



CSAK RANGE ABANDONMENT KITS

Abandonment

Cold Shrink Abandonment Kits

The CSAK-range is designed for use as a temporary or permanent cable abandonment on Low Voltage Cables up to and including 3.3kv. Manufactured from high quality EPDM they are designed for use with XLPE/PVC armoured, non-armoured and Lead Sheathed cables, providing environmental and mechanical protection. The CSAK-range is designed to accommodate single-core, multicore and ship-wiring cables, and requires no specialist tooling or heat source. All Cold Applied End Caps are designed with a longer body to offer additional moisture protection.



CSAK Abandonment Kits

CSAK Cold Shrink Cable Abandonment Kits are designed to be a quick and reliable method for temporary or permanent cable abandonment. The Cold Shrink tubes and end caps eliminate the need for heat or special tooling.

- Rated up to & including 1.9/3.3kV
- No heat source required
- No hot work permits required
- Cold Shrink Tubes and End Caps have a 5-year shelf life
- Temporary or permanent cable abandonment
- Quick installation time

Kits Content

- Cold Shrink Cable End Cap
- Cold Shrink Tube
- Earth connection components
- Self Amalgamating Insulation Tape
- Full Installation Instructions



Code	Description	Application Cable Diameter
CSAK-1	Cold Shrink Cable Abandonment Kit CSAK-1	10.0 - 18.0
CSAK-2	Cold Shrink Cable Abandonment Kit CSAK-2	16.0 - 26.0
CSAK-3	Cold Shrink Cable Abandonment Kit CSAK-3	23.0 - 43.0
CSAK-4	Cold Shrink Cable Abandonment Kit CSAK-4	40.0 - 55.0
CSAK-5	Cold Shrink Cable Abandonment Kit CSAK-5	54.0 - 83.0

Quick Selection Chart - Armoured Cable

No. of Cores	Cable Size mm ²																	
	1.5	2.5	4.0	6	10	16	25	35	50	70	95	120	150	185	240	300	400	
1	ON APPLICATION									CSAK-2			CSAK-3			CSAK-4		
2	CSAK-1			CSAK-2						CSAK-3			CSAK-4			CSAK-5		
3	CSAK-1	CSAK-1	CSAK-2				CSAK-3			CSAK-4			CSAK-5					
4	CSAK-1	CSAK-1	CSAK-2	CSAK-2	CSAK-3		CSAK-3	CSAK-4				CSAK-5						

All dimensions in mm except where stated

Cold End Caps

Cold Shrink Cable End Caps



Cold End Caps environmentally seal and mechanically protect exposed cable ends using no tools, mastics or tapes. They are close-ended, tubular rubber sleeves that are factory expanded and loaded onto a removable core. When positioned over the end of a cable, or other cylindrical object, the core is removed to provide a reliable seal which protects your cable ends from environmental damage. They are easily installed and cleanly removable. Whether in transit from the manufacturer, stored in the cable yard, or in process in a trench, your cable ends are protected from exposure to moisture, contamination and corrosion.

Cable End Caps

- Accommodates cables ranges from 12.0mm – 80.0mm OD in four sizes
- No torches or heat required
- No hot work permits required
- Water resistant
- Resists acids and alkalis
- Resists fungus - ASTM G-21 28 days no growth
- Quick installation time
- Seals tight, retains resiliency and pressure even after prolonged years of ageing and exposure
- Simple and fast installation, no tools required

Ultimate Tensile Strength: 10050 KPa - ASTM D-412

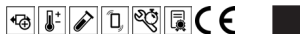
Ultimate Elongation: 600% - ASTM D-412

Moisture Absorption 7 days @ 90°C in H2O: 3.0% wt. Gain

Die C tear: 28.3KN/m - ASTM D-624C-73

Material: EPDM

Colour: Black



Code	Description	Supplied Inner Diameter	After Recovery Inner Diameter
CS-1	Cold Shrink Cable End Cap	20.0	12.0
CS-2	Cold Shrink Cable End Cap	28.0	16.0
CS-3	Cold Shrink Cable End Cap	56.0	23.0
CS-4	Cold Shrink Cable End Cap	80.0	46.0

Ident. & Wiring Term
Copper Lugs
Heatshrink Repair
Cable Joining
Junction Boxes
Flexible Conduit
Cable Glands
Gland Accs.
Cable Cleats
Earthing Lightning
MCC Cable
Cable Ties & Acc
Tooling & Cable Prep
Fixing & Security