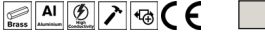


### Straight Mechanical Connectors

Straight Mechanical Connectors for use with RCM Resin Joints.

- Suitable for connecting conductors in straight joints
- Suitable for solid strand conductors
- Brass for sizes 1.5-120mm<sup>2</sup>.

**Material:** Nickel Plated Brass



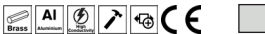
Code	Description	Cable Range mm <sup>2</sup>	Pack QTY
RMC1/0	Brass tunnel connector	1.5 - 6.0	4
RMC1/1	Brass tunnel connector	6.0 - 16.0	4
RMC1/2	Brass tunnel connector	10.0 - 35.0	4
RMC1/3	Brass tunnel connector	16.0 - 70.0	4
RMC1/5	Brass tunnel connector	50.0 - 95.0	4



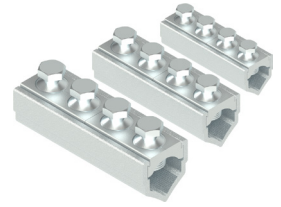
Straight Mechanical Connectors for use with RCM Resin Joints.

- Jointing of stranded aluminium or copper cores in applications up to 11kV
- Shear bolts to ensure a consistent & reliable connection
- Supplied with Brass gauze to improve electrical stability when joining copper cables
- Aluminium shear-head bolts for sizes 25-300mm<sup>2</sup>

**Material:** Aluminium



Code	Length	Width	Height	Cable Range mm <sup>2</sup>
UM95	86.0	26.0	24.5	25.0 - 95.0
UM185	108.0	35.0	33.0	35.0 - 185.0
UM300	120.0	41.0	40.0	70.0 - 300.0



### Two-Part Jointing Resin

Easy-pour Polyurethane resin is specially designed for cable joints up to 1kV. It has good anti corrosion properties and shows excellent adhesion to metals, ceramics, and many different plastics.

**Material:** Hydrolysis resistant polyurethane resin

**Voltage:** 1kV (1000v)

**Standards:** IEC 60455-3-8:2013



Code	Content ml	Colour
PR360	360	Black
PR800	800	Black
PR1800	1800	Black



Ident & Winding Term  
Copper Lugs  
Heatshrink Repair  
Cable Jointing  
Junction Boxes  
Flexible Conduit  
Cable Glands  
Gland Accs.  
Cable Cleats  
Earthing Lightning  
MCC Cable  
Cable Ties & Acc  
Tooling & Cable Prep  
Fixing & Security