

Utility Box Assemblies

Utility Box Assemblies offer versatility & adaptability. The 2-way option commonly being utilised as a through box for jointing 2 Steel Wire Armoured cable via the IPlus Corrosion Guard glands. While the 3-way option also offers in addition to the 2-way, a tap off point for flex none armoured cable via the PosiFlex gland. In both options, all unused ways will retain the IP68 blanking plugs. Earth continuity is made very easy by use of the internal ring, freeing up more space for the connection terminals.

Utility Box Assemblies

- No exposed metal parts
- Dust and water proof to IP68 with CCG glands IPlus & PosiFlex Glands
- One box offers 1, 2, 3 or 4 way versatility
- No drilling or tapping of cable entries required
- Mounting studs provided for DIN rail terminals
- Internal earth continuity ring to earth gland entries
- Screw on lid provides ease of installation locked with a special key to prevent unauthorised tampering and ease of installation

Utility Box

Protection: IP66 / IP68

Temperature Range: -60°C to 110°C

Material: Impact, Corrosion and UV Resistant Glass Reinforced Polyester

Colour: Grey

IPlus & PosiFlex Glands

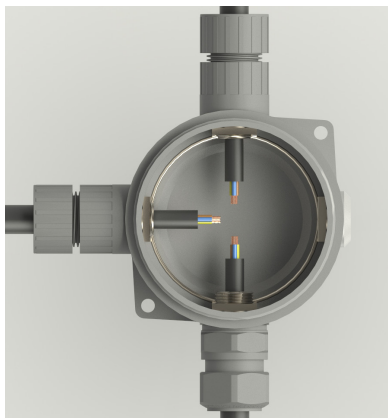
Protection: IP66 / IP68

Temperature Range: -65°C to 120°C

Material (Gland): Brass (Nickel Plated) BS 2874 / EN 12164

Material (Shroud/Body): Glass Reinforced Polyester / PBT

Material (Seal): Thermoset Elastomer



Utility Box 2 Way Assemblies

Through box assembly. IP66/67/68 weatherproof suitable for indoor / outdoor use, above and below ground. Designed to join two steel wire armoured cables together.

Code	Entry Thread	Glands	Armoured Cable OD
102101/A1	M20 x 1.5	2x M20s	11.5 - 16.0
102101/A2	M20 x 1.5	2x M20	14.5 - 20.5



Utility Box 3 Way Assemblies

Through box assembly. IP66/67/68 weatherproof suitable for indoor / outdoor use, above and below ground. Designed to join two steel wire armoured cables together with flex loop off option.

Code	Entry Thread	Glands	Armoured Cable OD	Unarmoured Cable OD
102101/A3	M20 x 1.5	2x M20s + 1x M20ss	11.5 - 16.0	3.0 - 8.0
102101/A4	M20 x 1.5	2x M20s + 1x M20s	11.5 - 16.0	7.0 - 11.5
102101/A5	M20 x 1.5	2x M20 + 1x M20	14.5 - 20.5	11.0 - 15.0

