

# Copper Tube Lugs | STANDARD COPPER TUBE TERMINALS

## COPPER TUBE TERMINALS

# Copper Lugs

### Copper Tube Lugs 120mm<sup>2</sup> to 1000mm<sup>2</sup> 600/1000V

Crimped termination of cables has long since replaced soldered ends, providing a clean, easy and reliable electrical and mechanical connection. Care must be taken when selecting the correct crimping tool and dies to ensure the correct compression of the copper lug.

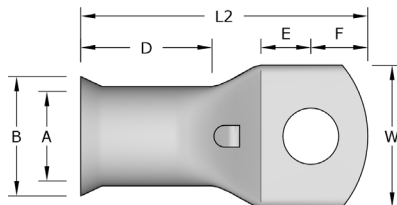
Remora Copper Tube Lugs are manufactured from precision drawn seamless copper tube to BS EN 12449:1999. All standard types in the range between 1.5mm<sup>2</sup> and 400mm<sup>2</sup> have bell mouth entries to ensure ease of entry, even with flexible conductors. All Copper Tube Lugs are tin plated to BS 1872 Part 2 for corrosion resistance and suitable for use up to 200°C.

Nickel plated lugs are available for high temperature applications up to 343°C.

**Temperature Range:** up to 200°C

**Material:** BS EN 12449:1999

**Plating:** Tin BS 1872 Part 2



| Code   | Cable Size mm <sup>2</sup> | Stud Size | (A)  | (B)  | (W)  | (E)  | (F)  | (D)  | (L2) | Palm Thickness |
|--------|----------------------------|-----------|------|------|------|------|------|------|------|----------------|
| 120-8  | 120                        | 8         | 15.0 | 19.0 | 27.3 | 14.0 | 10.0 | 20.0 | 55.0 | 4.0            |
| 120-10 | 120                        | 10        | 15.0 | 19.0 | 27.3 | 14.4 | 10.0 | 20.0 | 55.0 | 4.0            |
| 120-12 | 120                        | 12        | 15.0 | 19.0 | 27.3 | 14.0 | 10.0 | 20.0 | 55.0 | 4.0            |
| 120-14 | 120                        | 14        | 15.0 | 19.0 | 27.3 | 14.0 | 10.0 | 20.0 | 55.0 | 4.0            |
| 120-16 | 120                        | 16        | 15.0 | 19.0 | 27.3 | 14.0 | 13.0 | 20.0 | 60.0 | 4.0            |
| 150-10 | 150                        | 10        | 16.5 | 21.0 | 30.0 | 14.0 | 10.0 | 23.0 | 61.0 | 4.5            |
| 150-12 | 150                        | 12        | 16.5 | 21.0 | 30.0 | 14.0 | 10.0 | 23.0 | 61.0 | 4.5            |
| 150-14 | 150                        | 14        | 16.5 | 21.0 | 30.0 | 14.0 | 10.0 | 23.0 | 61.0 | 4.5            |
| 150-16 | 150                        | 16        | 16.5 | 21.0 | 30.0 | 14.0 | 10.0 | 23.0 | 61.0 | 4.5            |
| 185-10 | 185                        | 10        | 18.5 | 23.0 | 33.3 | 14.0 | 10.0 | 29.0 | 66.5 | 4.5            |
| 185-12 | 185                        | 12        | 18.5 | 23.0 | 33.3 | 14.0 | 10.0 | 29.0 | 68.0 | 4.5            |
| 185-14 | 185                        | 14        | 18.5 | 23.0 | 33.3 | 14.0 | 10.0 | 29.0 | 68.0 | 4.5            |
| 185-16 | 185                        | 16        | 18.5 | 23.0 | 33.3 | 14.5 | 10.0 | 29.0 | 70.0 | 4.5            |
| 240-10 | 240                        | 10        | 21.0 | 26.0 | 37.7 | 14.5 | 14.5 | 32.0 | 88.0 | 5.0            |
| 240-12 | 240                        | 12        | 21.0 | 26.0 | 37.7 | 14.5 | 14.5 | 32.0 | 88.0 | 5.0            |
| 240-14 | 240                        | 14        | 21.0 | 26.0 | 37.7 | 14.5 | 14.5 | 32.0 | 88.0 | 5.0            |
| 240-16 | 240                        | 16        | 21.0 | 26.0 | 37.7 | 18.0 | 14.5 | 32.0 | 88.0 | 5.0            |
| 240-20 | 240                        | 20        | 21.0 | 26.0 | 37.7 | 18.0 | 17.0 | 32.0 | 88.0 | 5.0            |



**Tooling**