

### PG-Metric Hazardous Reducers

Reduces housing entry thread.

• PG - ISO Metric range.

**Equipment Protection Levels:**

IECEX/INMETRO: Ex db I Mb / Ex eb I Mb / Ex db IIC Gb / Ex eb IIC Gb / Ex ta IIIC Da / Ex nR IIC

ATEX: Ⓢ I M2 Ex db I Mb / Ex eb I Mb, Ⓢ II 2G 1D Ex db IIC Gb / Ex eb IIC Gb / Ex ta IIIC Da

**Protection:** IP66 / IP68 (2m cont.)

**Temperature Range:** -60°C to 95°C (-60°C to 160°C with High Temp Gasket)

**Material:** Brass or Nickel Plated Brass (Marine Grade)



Code	Entry Thread		Thread Length				Hex Length	
	Male	Female	Male (L1)	Female (F)	A/F	A/C	Min (G)	
RPG16M20E-UN	PG16	M20 x 1.5	15.0	15.0	32.0	36.0	7.0	
RPG21M20E-UN	PG21	M20 x 1.5	17.0	15.0	35.0	39.4	7.0	
RPG21M25E-UN	PG21	M25 x 1.5	17.0	15.0	36.0	40.7	7.0	
RPG29M20E-UN	PG29	M20 x 1.5	17.0	15.0	50.0	56.3	7.0	
RPG29M25E-UN	PG29	M25 x 1.5	17.0	15.0	50.0	56.3	7.0	
RPG29M32E-UN	PG29	M32 x 1.5	17.0	15.0	50.0	56.3	7.0	
RPG36M20E-UN	PG36	M20 x 1.5	17.0	15.0	60.0	67.5	7.0	
RPG36M25E-UN	PG36	M25 x 1.5	17.0	15.0	60.0	67.5	7.0	
RPG36M32E-UN	PG36	M32 x 1.5	17.0	15.0	60.0	67.5	7.0	
RPG36M40E-UN	PG36	M40 x 1.5	17.0	15.0	60.0	67.5	7.0	
RPG42M20E-UN	PG42	M20 x 1.5	17.0	15.0	60.0	67.5	7.0	
RPG42M25E-UN	PG42	M25 x 1.5	17.0	15.0	60.0	67.5	7.0	
RPG42M32E-UN	PG42	M32 x 1.5	17.0	15.0	60.0	67.5	7.0	
RPG42M40E-UN	PG42	M40 x 1.5	17.0	15.0	60.0	67.5	7.0	
RPG42M50E-UN	PG42	M50 x 1.5	17.0	15.0	60.0	67.5	7.0	
RPG48M32E-UN	PG48	M32 x 1.5	17.0	15.0	70.0	78.0	7.0	
RPG48M40E-UN	PG48	M40 x 1.5	17.0	15.0	70.0	78.0	7.0	
RPG48M50E-UN	PG48	M50 x 1.5	17.0	15.0	70.0	78.0	7.0	

• For Nickel Plated remove -UN when ordering

### NPT-Metric Hazardous Reducers

Reduces housing entry thread.

• NPT - ISO Metric range.

**Equipment Protection Levels:**

IECEX/INMETRO: Ex db I Mb / Ex eb I Mb / Ex db IIC Gb / Ex eb IIC Gb / Ex ta IIIC Da / Ex nR IIC

ATEX: Ⓢ I M2 Ex db I Mb / Ex eb I Mb, Ⓢ II 2G 1D Ex db IIC Gb / Ex eb IIC Gb / Ex ta IIIC Da

**Protection:** IP65 / IP66

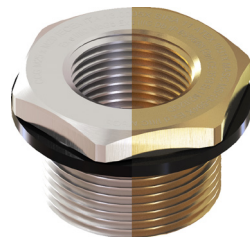
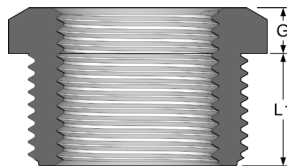
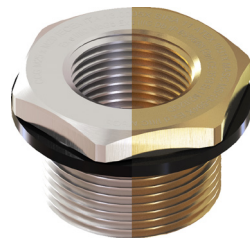
**Temperature Range:** -60°C to 95°C

**Material:** Brass or Nickel Plated Brass (Marine Grade)



Code	Entry Thread		Thread Length				Hex Length	
	Male	Female	Male (L1)	Female (F)	A/F	A/C	Min (G)	
RN075M20E-UN	¾" / 0.75 NPT	M20 x 1.5	15.0	15.0	27.0	30.4	6.0	
RN100M20E-UN	1" / 1.00 NPT	M20 x 1.5	19.0	15.0	35.0	39.4	6.0	
RN100M25E-UN	1" / 1.00 NPT	M25 x 1.5	19.0	15.0	42.0	47.3	6.0	
RN125M20E-UN	1¼" / 1.25 NPT	M20 x 1.5	19.0	15.0	42.0	47.3	6.0	
RN125M25E-UN	1¼" / 1.25 NPT	M25 x 1.5	19.0	15.0	42.0	47.3	6.0	
RN125M32E-UN	1¼" / 1.25 NPT	M32 x 1.5	19.0	15.0	42.0	47.3	6.0	
RN150M20E-UN	1½" / 1.50 NPT	M20 x 1.5	21.0	15.0	48.0	54.0	6.0	
RN150M25E-UN	1½" / 1.50 NPT	M25 x 1.5	21.0	15.0	48.0	54.0	6.0	
RN150M32E-UN	1½" / 1.50 NPT	M32 x 1.5	21.0	15.0	48.0	54.0	6.0	
RN150M40E-UN	1½" / 1.50 NPT	M40 x 1.5	21.0	15.0	48.0	54.0	6.0	

• For Nickel Plated remove -UN when ordering



Call the Remora sales team at **01226 352 000**

Challenge us - We find a solution