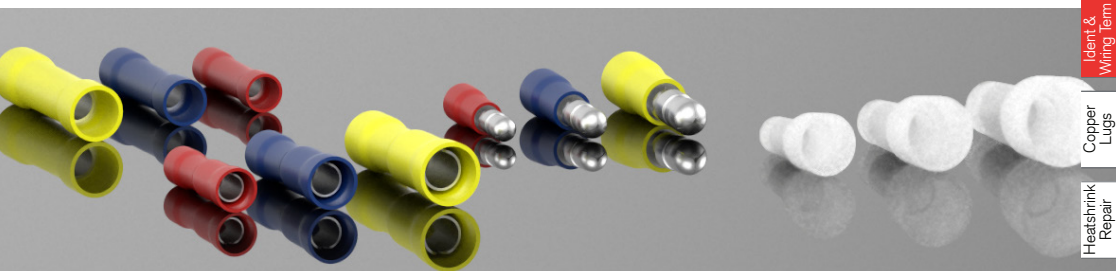


# PRE-INSULATED BULLET CONNECTORS | Ident & Terminals

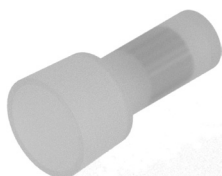
## QUICK CONNECTORS



Ident & Wiring Term  
Copper Lugs  
Heatshrink Repair  
Cable Joining  
Junction Boxes  
Flexible Conduit  
Cable Glands  
Gland Accs.  
Cable Cleats  
Earthing Lightning  
MCC Cable  
Cable Ties & Acc  
Tooling & Cable Prep  
Fixing & Security

### Closed End Connectors

Closed end connectors.

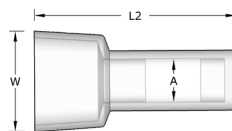
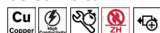


**Temperature Range:** -40°C to 105°C

**Material:** Tin Plated Copper / Zero Halogen Nylon Insulation

**Voltage:** 600V

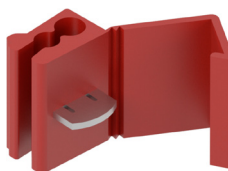
**Colour:** Clear



Code	Range mm <sup>2</sup>	ID (A)	Length (L2)	Width (W)	Pack QTY
CECS	0.5 - 1.5	2.6	18.2	5.5	100
CECM	1.5 - 2.5	3.3	20.0	8.0	100
CECL	4.0 - 6.0	4.5	25.5	11.0	100

### Quick Splice / Connectors

Quick splice connectors.

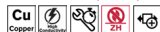


**Temperature Range:** -40°C to 105°C

**Material:** Tin Plated Copper / Zero Halogen Nylon Insulation

**Voltage:** 600V

**Colour:** Red, Blue, Yellow



Code	Colour	Range mm <sup>2</sup>	Length (L2)	Width (W)	Pack QTY
RCT	Red - 19A Max	0.5 - 1.5	29.0	19.0	100
BCT	Blue - 27A Max	1.5 - 2.5	29.0	19.0	100
YCT	Yellow - 48A Max	4.0 - 6.0	35.5	20.4	100

### Heat Shrinkable Solder Sleeve

Heat shrinkable solder sleeve.

**Temperature Range:** -45°C to 125°C

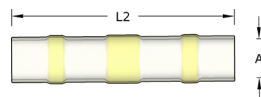
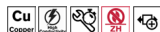
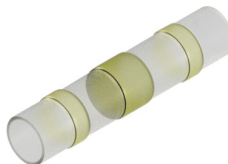
**Shrinkable Temp:** +125°C to 180°C

**Material:** Polyethylene Insulation / Solder ring / Glue adhesive

**Colour:** Red, Blue, Yellow, White

**Voltage:** 600V

**Standards:** DIN 46288 Part 4



Code	Colour	Range mm <sup>2</sup>	Length (L2)	Min (A)	Wire Min	Wire Max	Pack QTY
HSSOLW	White	0.25-.034	26.0	1.7	0.4	1.7	100
HSSOLR	Red - 19A Max	0.5-1.5	40.0	2.7	1.3	2.7	100
HSSOLB	Blue - 27A Max	1.5-2.5	40.0	4.5	1.8	4.5	100
HSSOLY	Yellow - 48A Max	4.0-6.0	40.0	6.0	2.8	6.0	100