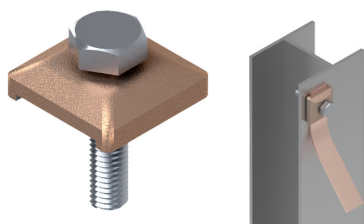


Earthing & Lightning | EARTH RODS & ACCESSORIES

EARTH RODS and ACCESSORIES

Ident & Wiring Term
Copper Lugs
Heatshrink Repair
Cable Jointing
Junction Boxes
Flexible Conduit
Cable Glands
Gland Accs.
Cable Cleats
Earthing & Lightning
MCC Cable
Cable Ties & Acc
Tooling & Cable Prep
Fixing & Security



'B' Bond

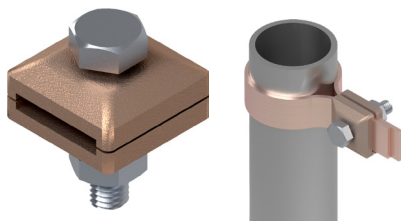
B' type Bond connections are designed to bond either copper or aluminium conductor to flat metal surfaces

Material: Gunmetal

Standards: BS 7430



Code	Max Tape Width	Bolt Size	Conductor Material	Pack QTY
BN105	26	M10	Copper	10



RWP Bond Clamp

RWP type Bond connections are designed to connect flat conductor to circular objects ie pipework and hand rails etc.

Material: Gunmetal

Standards: BS 7430



Code	Max Tape Width	Bolt Size	Conductor Material	Pack QTY
BN115	26	M10	Copper	10



EC1 Earthing Clamp

EC1 earth clamp for large diameter circular objects ie. pipework and hand rails etc.

Strap Material: Stainless Steel (304 grade)

Body Material: Phosphorus Bronze

Label Material: Aluminium



Code	Terminal Size	Strap Length	Pipe Diameter
EC1	2.5 - 10.0mm ²	1600 (63")	50.0 to 450.0



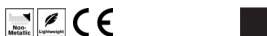
Earth Electrode Box

Earth Electrode protects the connection to an earth electrode. Designed for use with 20mm conduit, suitable for countersunk installation that provides easy access for inspection.

Material: PVC

Colour: Black Body / White Lid with Red Printing

Print: 'SAFETY ELECTRICAL CONNECTION DO NOT REMOVE'



Code	Description	Dimensions	Conduit Size
ERB	Black Round Earth Electrode Box	65 x 65 x 85	20