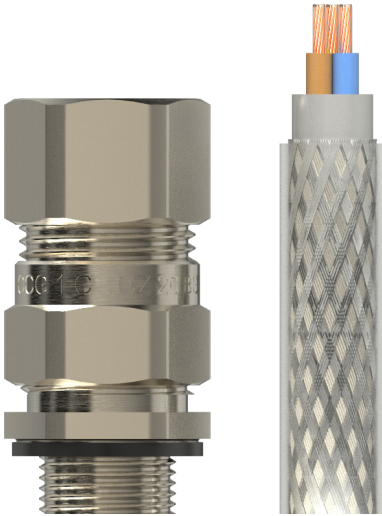


# Cable Glands | INDUSTRIAL CCG® CABLE GLANDS

INDOOR/OUTDOOR - FLEXIBLE WIRE BRAID and TAPE



## CCG CX/Z Cable Gland

The CX/Z Gland is designed for all braided or tape armoured cable for general outdoor use where a seal on the outer sheath is required to obtain an IP rating. The gland features two-part handling with no loose parts. A freely rotating captive cone provides an armour clamp and earth bond without twisting the armouring. Seals on the cable sheath to IP66 if fitted with a sealing washer.

- For indoor and outdoor use.
- Two-part handling, no loose parts.
- Freely rotating captive cone, providing an armour clamp and earth bond without twisting the armouring.
- Patented disconnect armour clamp system for ease of inspection.
- Supplied complete with IP sealing washer.

**Design Standards:** BS 6121 Part 1 IEC/BS EN 62444  
SANS 62444 SANS 1213

**Protection:** IP66 (Parallel) IEC 60529  
**Marine:** ABS IEC 60529, IEC 62444  
DNV IEC 60529, BS 6121, IEC 62444

**London Underground Approval:** BS EN 62444



**EMC Compatible:** EN 55011, + A1, EN55022

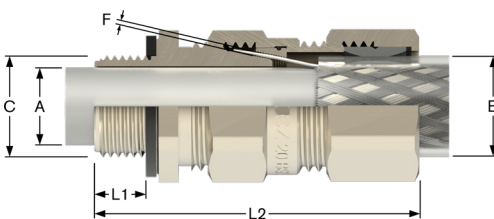
**Temperature Range:** -65°C to 120°C

**Material (Gland):** Brass (Nickel Plated) BS 2874 / EN 12164

**Material (Seal):** Thermoset Elastomer



Code	Kit Code	LS Kit Code	Size	Bedding OD (A)		Cable OD (B)		Gland		Armour Dia (F)		Thread		Length (L1)	A/F	A/C
				Max	Min	Max	Min	Max	Min	Max	Entry (C)	Length				
051300	GPCX00	GPCX00LS	00 - 20ss	8.0	8.0	13.5	65.0	0.20	0.85	M20 x 1.5	10.0	24.0	27.0			
0513-0	GPCX0	GPCX0LS	0 - 20s	12.0	11.5	16.0	65.0	0.20	0.85	M20 x 1.5	10.0	24.0	27.0			
051301	GPCX1	GPCX1LS	1 - 20	15.5	14.5	20.5	65.0	0.20	1.25	M20 x 1.5	10.0	27.0	30.0			
051302	GPCX2	GPCX2LS	2 - 25	20.0	20.5	26.5	70.0	0.20	1.25	M25 x 1.5	10.0	35.0	39.0			
051303	GPCX3	GPCX3LS	3 - 32	26.5	26.5	33.5	80.0	0.20	1.40	M32 x 1.5	10.0	42.0	47.0			
051304	GPCX4	GPCX4LS	4 - 40	34.5	33.0	42.5	80.0	0.30	1.40	M40 x 1.5	15.0	52.0	59.0			
051305	GPCX5	GPCX5LS	5 - 50	44.5	42.5	52.5	90.0	0.40	1.40	M50 x 1.5	15.0	65.0	73.0			
051306	GPCX6	GPCX6LS	6 - 63	57.0	52.5	65.5	100.0	0.40	1.50	M63 x 1.5	15.0	80.0	90.0			
051307	GPCX7	GPCX7LS	7 - 75	68.0	65.5	78.0	120.0	0.40	1.50	M75 x 1.5	15.0	96.0	108.0			
051308	GPCX8	GPCX8LS	8 - 80	74.0	77.5	82.0	145.0	2.50	1.60	M80 x 2.0	20.0	96.0	108.0			
051309	GPCX9	GPCX9LS	9 - 90	82.0	82.0	91.0	165.0	3.00	1.60	M90 x 2.0	20.0	110.0	124.0			



## Kits and Accessories

Kits supplied with;  
2 glands, 2 locknuts, 2 earhtags, 2 PVC or LS shrouds (M16-M32)  
1 gland, 1 locknut, 1 earhtag, 1 PVC or LS shrouds (M40-M90)

