

# ATEX ENCLOSURES | Junction Boxes & Enclosures

## ENCLOSURE ACCESSORIES

### DIN Rails

DIN Rails are designed in accordance with the European Standard DIN EN 60715. Manufactured to a high degree of dimensional accuracy and restricted tolerances. DIN Rails are available in standard lengths of 2M with or without perforation.

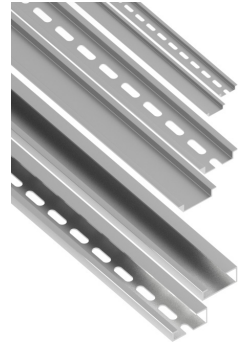
**Material:** Galvanised Steel, Chromium Plated

**Colour:** Silver

**Standards:** DIN EN 60715



Code	Type	Width	Height	Thickness	Length (m)
TS32	Solid	32.0	15.0	1.5	2
TS32-1	Slotted	32.0	15.0	1.5	2
TS35	Solid	35.0	7.5	1.0	2
TS35-1	Slotted	35.0	7.5	1.0	2



- Ident & Wiring Term
- Copper Lugs
- Heatshrink Repair
- Cable Joining
- Junction Boxes
- Flexible Conduit
- Cable Glands
- Gland Accs.
- Cable Cleats
- Earthing Lightning
- MCC Cable
- Cable Ties & Acc
- Tooling & Cable Prep
- Fixing & Security