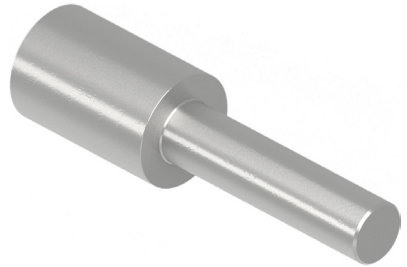


Copper Tube Lugs | PIN / BLADE TERMINALS

ROUND PIN TERMINALS

Pin Lugs



Copper Pin Lugs 600/1000V

Round Pin Copper Tube Lugs are designed for terminating cables into terminal blocks. The reduced pin makes these terminals ideal for terminating conductors into contact block applications.

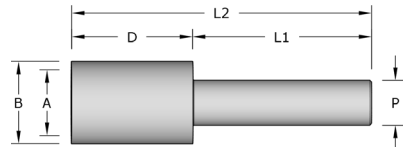
All Copper Pin Lugs are designed and manufactured to meet the performance requirements of BS EN61238-1-2003 and BS 4579.

Nickel plated lugs are available for high temperature applications up to 343°C.

Temperature Range: up to 200°C

Material: Copper BS EN 61238-1-2003 and BS 4579 Part 1

Plating: Tin BS 1872 Part 2



Code	Cable Size mm ²	(A)	(B)	(D)	(L1)	(L2)	Pin Dia (P)
10-P	10	4.4	6.25	13.0	10.0	23.0	3.8
16-P	16	5.60	7.0	16.5	13.0	30.0	3.8
25-P	25	7.0	9.0	19.0	19.0	38.0	5.0
35-P	35	8.2	10.7	21.0	19.0	40.0	5.0
50-P	50	9.5	12.3	21.5	19.0	41.0	7.5
70-P	70	11.5	15.8	27.0	19.0	45.0	8.0
95-P	95	13.5	17.0	27.0	19.0	45.0	8.0
120-P	120	19.0	19.0	30.0	24.0	54.0	10.0
150-P	150	16.5	22.0	32.0	24.0	56.0	10.0
185-P	185	18.5	25.0	35.0	25.0	60.0	12.0
240-P	240	21.0	25.0	37.0	25.0	62.0	14.0
300-P	300	23.0	28.0	50.0	32.0	82.0	16.0
400-P	400	27.0	32.0	53.0	56.0	85.0	16.0



Tooling