

EMC GriPloc Glands® Metric

- Cable Gland featuring contact on 360° for EMC protection.
- GriPloc Seal® - Superior Ingress Protection and mechanical grip

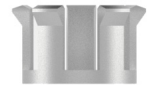
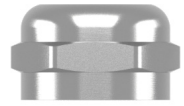
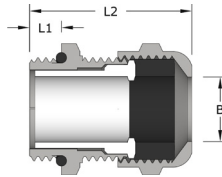
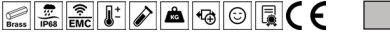
Standards: EN 60423

Protection: IP68

Temperature Range: -25°C to 100°C (static) (120° Instantaneous)

Material (Gland): Nickel-Plated Brass

Material (Seal): NBR Seal and EPDM O-Ring



Code	Cable Range (B)		Entry Thread	Gland		A/F
	Min	Max	Size	Length (L1)	Length (L2)	
EMC-IP68M12	4.0	6.5	M12 x 1.5	7.0	37.0	14.0
EMC-IP68M16	5.0	8.5	M16 x 1.5	7.0	38.0	17.0
EMC-IP68M20	8.0	12.5	M20 x 1.5	7.0	41.0	22.0
EMC-IP68M25	13.5	18.0	M25 x 1.5	8.0	51.0	31.0
EMC-IP68M32	17.0	24.0	M32 x 1.5	8.5	60.5	40.0
EMC-IP68M40	24.0	30.0	M40 x 1.5	8.5	67.0	50.0
EMC-IP68M50	22.0	35.0	M50 x 1.5	9.0	48.0	60.0
EMC-IP68M63	35.0	48.0	M63 x 1.5	10.0	54.0	65.0

¹ Long-Thread available to request

Brass EMC Locknuts

Brass Locknuts are recommended for use in securing brass cable glands, unions, thread converters and stopping plugs. EMC Locknuts are used whenever glanding through varnished, powder coated or anodised housings. The locknut has raised corners which break through the treated surface, grounding the cable gland.

Temperature Range: -250°C to 200°C

Material: Brass BS 2874 CZ121 Pb3

Finish: Nickel Plated



Nickel Plated Brass						
Code	Entry Thread	A/F	A/C	Thickness	Pack QTY	
BLN12-EMC	M12 x 1.5	15.0	17.0	4.7	100	
BLN16-EMC	M16 x 1.5	19.0	21.0	4.7	100	
BLN1-EMC	M20 x 1.5	24.0	27.0	4.7	100	
BLN2-EMC	M25 x 1.5	30.0	34.0	5.2	100	
BLN3-EMC	M32 x 1.5	36.0	40.0	5.7	100	
BLN4-EMC	M40 x 1.5	46.0	50.0	6.5	50	
BLN5-EMC	M50 x 1.5	60.0	65.0	7.0	25	
BLN6-EMC	M63 x 1.5	70.0	75.0	7.0	25	
BLN7-EMC	M75 x 1.5	80.0	89.0	10.0	10	

