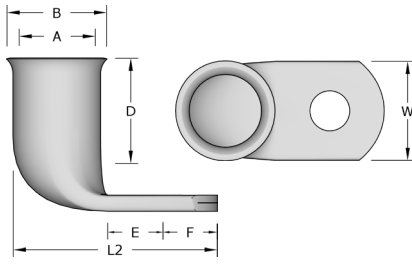


Right Angle



Copper Right Angle Lugs 600/1000V

Right Angle Lugs as used when more than one cable is to be terminated into the contact block or take off palm and the cables are coming from different directions, rather than trying to form or bend a traditional lug. Professionally formed at source, meeting all the relevant standards, takes all the hassles away. Remora Right Angle Lugs are manufactured from precision drawn seamless copper tube to BS EN 12449:1999. All standard types in the range between 10mm² and 150mm² have bell mouth entries to ensure ease of entry, even with flexible conductors. All Copper Tube Lugs are tin plated to BS 1872 Part 2 for corrosion resistance and suitable for use up to 200°C. Nickel plated lugs are available for high temperature applications up to 343°C.

Temperature Range: up to 200°C

Material: BS EN 12449:1999

Plating: Tin BS 1872 Part 2



Code	Cable Size mm ²	Stud Size	(A)	(B)	(W)	(E)	(F)	(D)	(L2)	Palm Thickness
10-6RA	10	6	4.4	6.9	11.0	9.0	9.0	9.0	17.9	2.0
10-8RA	10	8	4.4	6.9	11.0	9.0	9.0	11.0	24.9	1.6
10-10RA	10	10	4.4	6.9	16.0	10.5	10.5	10.0	28.9	1.5
16-6RA	16	6	5.6	8.0	11.0	8.5	8.5	11.0	19.0	2.2
16-8RA	16	8	5.6	8.0	11.0	8.5	8.5	11.0	26.0	1.7
16-10RA	16	10	5.6	8.0	15.0	11.0	11.0	11.0	30.0	1.5
25-6RA	25	6	7.0	9.5	13.5	8.5	8.5	13.0	27.5	2.4
25-8RA	25	8	7.0	9.5	13.5	8.5	8.5	13.0	27.5	2.4
25-10RA	25	10	7.0	9.5	17.0	11.0	11.0	13.0	31.5	2.0
35-6RA	35	6	8.0	11.0	16.0	8.5	8.5	14.0	29.0	2.8
35-8RA	35	8	8.0	11.0	16.0	8.5	8.5	14.0	29.0	2.8
35-10RA	35	10	8.0	11.0	16.0	11.0	11.0	14.0	33.0	2.8
50-8RA	50	8	9.5	12.1	17.5	9.0	9.0	18.0	30.2	2.4
50-10RA	50	10	9.5	12.1	17.5	9.0	9.0	18.0	34.1	2.4
50-12RA	50	12	9.5	12.1	17.5	11.0	11.0	18.0	34.1	2.4
70-8RA	70	8	11.5	15.0	21.5	8.5	8.5	18.0	33.0	3.5
70-10RA	70	10	11.5	15.0	21.5	10.5	10.5	18.0	37.0	3.5
70-12RA	70	12	11.5	15.0	21.5	10.5	10.5	18.0	37.0	3.5
95-8RA	95	8	13.5	17.0	24.3	13.0	10.0	24.0	39.0	3.5
95-10RA	95	10	13.5	17.0	24.3	13.0	10.0	24.0	39.0	3.5
95-12RA	95	12	13.5	17.0	24.3	13.0	10.0	24.0	39.0	3.5
95-14RA	95	14	13.5	17.0	21.2	13.0	10.0	24.0	39.0	3.5
120-10RA	120	10	15.0	19.0	27.3	18.0	18.0	27.0	52.0	4.0
120-12RA	120	12	15.0	19.0	27.3	18.0	18.0	27.0	52.0	4.0
120-14RA	120	14	15.0	19.0	27.3	18.0	18.0	27.0	52.0	4.0
150-10RA	150	10	16.5	21.0	30.3	18.0	18.0	27.0	54.0	4.5
150-12RA	150	12	16.5	21.0	30.3	18.0	18.0	27.0	54.0	4.5

Ident & Wiring term
Copper Lugs
Heatshrink Repair
Cable Joining
Junction Boxes
Flexible Conduit
Cable Glands
Gland Accs.
Cable Cleats
Earthing Lightning
MCC Cable
Cable Ties & Acc
Tooling & Cable Prep
Fixing & Security