

Copper Tube Lugs | BLANK / NARROW PALM TERMINALS

BLANK COPPER TUBE TERMINALS

Blank Lugs



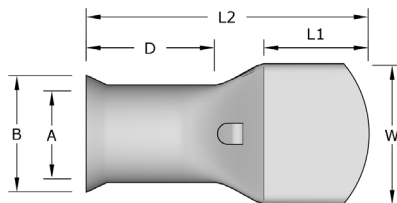
Copper Blank Tube Lugs 600/1000V

Blank Palm Lugs allow the freedom for the user to customise the lug to any special requirements, relating to stud size, diameter and position. Remora Blank Palm Lugs are manufactured from precision drawn seamless copper tube to BS EN 12449:1999. All standard types in the range between 1.5mm² and 400mm² have bell mouth entries to ensure ease of entry, even with flexible conductors. All Copper Tube Lugs are tin plated to BS 1872 Part 2 for corrosion resistance and suitable for use up to 200°C. Nickel plated lugs are available for high temperature applications up to 343°C.

Temperature Range: up to 200°C

Material: BS EN 12449:1999

Plating: Tin BS 1872 Part 2



Code	Cable Size mm ²	(A)	(B)	(W)	(L1)	(D)	(L2)	Palm Thickness
10-B	10	4.4	6.9	18.0	22.0	4.7	39.0	1.2
16-B	16	5.6	8.0	18.0	22.0	5.5	42.0	1.3
25-B	25	7.0	9.4	18.0	20.5	7.0	38.0	1.9
35-B	35	8.2	10.6	18.0	20.5	8.2	40.5	2.2
50-B	50	9.5	11.9	17.4	20.5	9.5	42.5	2.5
70-B	70	11.5	14.5	20.9	26.0	11.5	50.0	3.0
95-B	95	13.5	16.7	24.3	26.0	19.0	56.0	3.2
120-B	120	15.0	19.0	27.3	26.0	20.0	60.0	4.0
150-B	150	16.5	21.0	30.2	26.0	23.0	61.0	4.5
185-B	185	18.5	23.0	33.3	26.0	29.0	70.0	4.5
240-B	240	21.0	26.0	37.7	35.0	32.0	88.0	5.0
300-B	300	23.0	28.0	41.0	35.0	37.0	97.0	5.0
400-B	400	27.0	32.0	47.3	44.0	38.0	108.0	5.0
500-B	500	30.0	36.0	53.0	52.0	38.0	117.0	6.9
630-B	630	33.8	44.0	63.0	48.0	46.0	127.0	10.2
800-B	800	38.0	49.0	70.0	68.0	56.0	164.0	11.0
1000-B	1000	42.5	53.0	77.0	68.0	56.0	169.0	10.5



Tooling