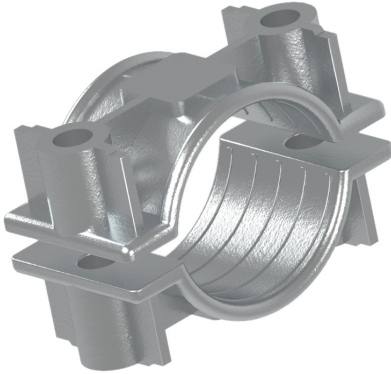


Dual-Fixing

Aluminium Two-Part Dual-Fixing

LM6 Aluminium

The Two Hole Cable Clamps are designed to fix cables 51mm to 120mm diameter. Manufactured from LM6 aluminium to BS1490. They are fully stackable and specifically designed to mount directly to channel, ladder or any flat surface.



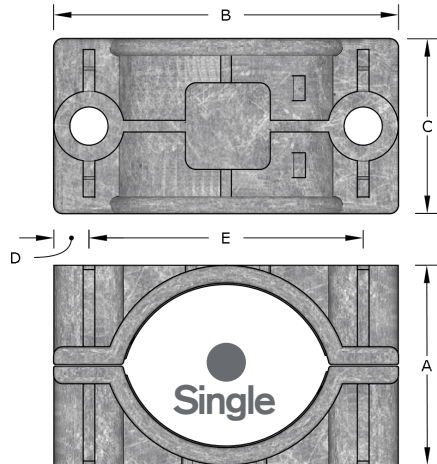
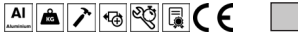
Dual Fixing - Aluminium

- Fastening/fitting/routing single and multiple conductor low, medium and high voltage cables
- Excellent weathering and corrosion resistance
- Excellent stiffness
- Excellent tensile strength
- Fully recyclable

Standards: European Standard IEC 61914:2021

Temperature Range: -60°C to 100°C

Material: Aluminium LM6 (BS 1490)



Aluminium Code	Cable Range		Stud Hole Size	Dimensions					Fixing Kit
	Min	Max		(A)	(B)	(C)	(D)	(E)	
2ALM10	51.0	57.0	2 x M10	68.0	96.0	49.0	10.0	76.0	DBFK10-100
2ALM11	57.0	64.0	2 x M10	75.0	96.0	49.0	10.0	76.0	DBFK10-125
2ALM12	64.0	70.0	2 x M10	84.0	134.0	64.0	10.0	114.0	DBFK10-125
2ALM13	70.0	76.0	2 x M10	90.0	134.0	64.0	10.0	114.0	DBFK10-125
2ALM14	76.0	83.0	2 x M12	96.0	142.0	64.0	14.0	114.0	DBFK10-150
2ALM15	83.0	89.0	2 x M12	102.0	142.0	64.0	14.0	114.0	DBFK10-150
2ALM16	89.0	95.0	2 x M12	114.0	154.0	76.0	14.0	126.0	DBFK10-150
2ALM17	95.0	101.0	2 x M12	120.0	154.0	76.0	14.0	126.0	DBFK10-200
2ALM18	101.0	108.0	2 x M12	134.0	169.0	76.0	14.5	140.0	DBFK10-200
2ALM19	108.0	114.0	2 x M12	140.0	169.0	76.0	14.5	140.0	DBFK10-200
2ALM20	114.0	120.0	2 x M12	144.0	174.0	76.0	14.5	145.0	DBFK10-200



Fixing Kit (see p.206)

Challenge us - We find a solution