

Junction Boxes & Enclosures | ATEX ENCLOSURES

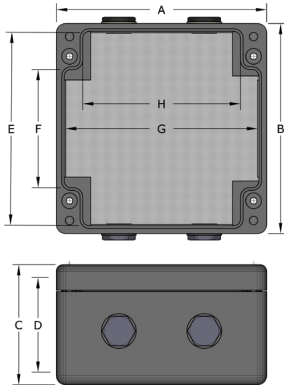
PRE-ASSEMBLED ATEX ENCLOSURE

GRP ATEX Enclosure

Pre-assemble GRP Enclosure



The Remora GRP-EX range of enclosures are available pre-assembled and are readily available from stock. The GRP-EX enclosures are ideal for uses such as lighting, power and instrument junction boxes. Each enclosure comes pre-drilled with M20 tapped cable entries and is supplied with certified blanking plugs. GRP-EX range of enclosures are Ex e, Ex ia and Ex ib requirements to EN 60079:2007.



ATEX Pre-assembled Enclosure

- Pre-drilled M20 tapped cable gland entries supplied with blanking plugs
- No drilling or tapping of cable entries required
- Equipped with DIN rail mounted terminals as shown in below specification table
- Equipped with earth continuity plate and M6 internal/external earth stud
- Dust and water proof to IP66 and IP67

Protection: IP66 / IP67

Ambient Temperature Range: -20°C to 40°C at T6

-20°C to 55°C at T5

-55°C to 65°C (available with SiliconeSeal)

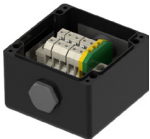
Material: Carbon Loaded Glass Reinforced Polyester GRP

Colour: Black

Standards: ATEX & IECEx (Zone 1 & 2 Zone 21 & 22)

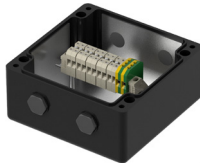


Code	(A)	(B)	(C)	(D)	(E)	(F)	(G)	(H)
GRP807555-P	80.0	75.0	55.0	46.0	66.0	27.0	71.0	56.0
GRP12212090-P	122.0	120.0	90.0	81.5	111.0	66.0	113.0	90.0
GRP16016090-P	160.0	160.0	90.0	80.0	148.0	90.0	148.0	120.0
GRP26016090-P	260.0	160.0	90.0	80.0	148.0	90.0	90.0	220.0



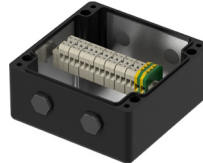
GRP807555-P

- 2 x M20 cable entries
- 5 x 2.5mm² terminals
- 1 x 4.0mm² earth terminal
- Earth continuity plate
- M6 earth stud
- 2 x blanking plugs
- ATEX certification label



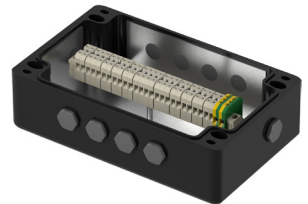
GRP12212090-P

- 4 x M20 cable entries
- 10 x 2.5mm² terminals
- 2 x 4.0mm² earth terminal
- Earth continuity plate
- M6 earth stud
- 4 x blanking plugs
- ATEX certification label



GRP16016090-P

- 4 x M20 cable entries
- 15 x 2.5mm² terminals
- 2 x 4.0mm² earth terminal
- Earth continuity plate
- M6 earth stud
- 4 x blanking plugs
- ATEX certification label



GRP26016090-P

- 10 x M20 cable entries
- 26 x 2.5mm² terminals
- 2 x 4.0mm² earth terminal
- Earth continuity plate
- M6 earth stud
- 10 x blanking plugs
- ATEX certification label

All dimensions in mm except where stated