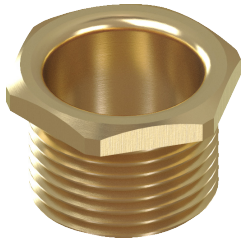


Accessories | BUSHES & COUPLERS

METRIC BRASS BUSHES



Male Brass Bushes

Brass Bushes are designed to protect cables from sharp edges when entering trunking or equipment. Standard bushes are supplied with hexagon body. Manufactured from high quality brass BS 2874 CZ121 Pb3.

- ISO Metric range.
- Application; Machines, Devices, Housings, Panels

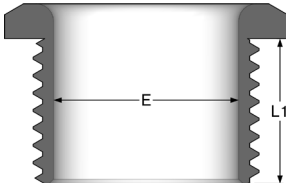
Standards: EN 50262

Temperature Range: -60°C to 200°C

Material: Brass BS 2874 CZ121 Pb3



Code	Entry Thread	Thread Length (L1)	Bore (E)
MBBM20	M20 x 1.5	12.5	16.0
MBBM25	M25 x 1.5	13.0	21.3
MBBM32	M32 x 1.5	14.5	27.7
MBBM40	M40 x 1.5	15.0	34.5
MBBM50	M50 x 1.5	15.0	44.7
MBBM63	M63 x 1.5	15.5	56.5
MBBM75	M75 x 1.5	16.5	68.5
MBBM100	M100 x 2.0	20.0	92.7



Female Brass Bushes

Female Bushes are used on the end of conduit tube or any other male threaded component to protect the cabling from any sharp edges.

- ISO Metric range.
- Application; Machines, Devices, Housings, Panels

Standards: EN 50262

Temperature Range: -60°C to 200°C

Material: Brass BS 2874 CZ121 Pb3



Code	Entry Thread	Thread Length (L1)	Bore (E)
FBBM20	M20 x 1.5	6.0	16.0
FBBM25	M25 x 1.5	5.5	21.3
FBBM32	M32 x 1.5	5.0	27.7
FBBM40	M40 x 1.5	7.0	34.5
FBBM50	M50 x 1.5	9.0	44.7
FBBM63	M63 x 1.5	12.0	56.5
FBBM75	M75 x 1.5	15.0	68.5

