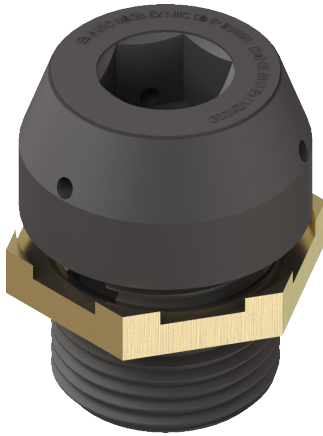


Accessories | BREATHER DRAIN PLUGS

HAZARDOUS AREA EXE NYLON BREATHER DRAIN PLUG



Nylon Exe Breather Drain Plug

The Exe Nylon breather drain effectively drains moisture from an enclosure and allows air from the enclosure to vent into the surrounding atmosphere thereby minimising moisture build up.

- The Exe version is supplied with a brass castellated nut
- Drains water from equipment susceptible to moisture collection.
- Enables equipment to breathe whilst maintaining protection levels.

Standards: ATEX: - II 2 GD, Ex e II only

Certification: IECEX SIR 09.0096U
ATEX SIR 10ATEX3279U EN 50019:1994 EN 50281-1-1:1998



IP Protection: IP66

Temperature Range: -20°C to 65°C

Material: Glass Filled Nylon



Code	Protection	Entry Thread				
	Level	Type	Min Length (L1)	Allen Key AF	Head Diameter	Head Protrusion
TT-M20-N-EX	Exe	M20 x 1.5	10.0	10.0	25.4	14.0
TT-M25-N-EX	Exe	M25 x 1.5	10.0	10.0	30.5	14.0
TT-M32-N-EX	Exe	M32 x 1.5	10.0	10.0	38.0	14.0

