

Copper Tube Lugs | STANDARD COPPER TUBE TERMINALS

COPPER TUBE TERMINALS

Copper Lugs

Copper Tube Lugs 1.5mm² to 95mm² 600/1000V

Crimped termination of cables has long since replaced soldered ends, providing a clean, easy and reliable electrical and mechanical connection. Care must be taken when selecting the correct crimping tool and dies to ensure the correct compression of the copper lug.

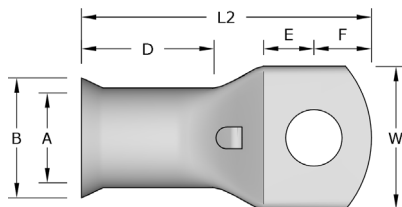
Remora Copper Tube Lugs are manufactured from precision drawn seamless copper tube to BS EN 12449:1999. All standard types in the range between 1.5mm² and 400mm² have bell mouth entries to ensure ease of entry, even with flexible conductors. All Copper Tube Lugs are tin plated to BS 1872 Part 2 for corrosion resistance and suitable for use up to 200°C.

Nickel plated lugs are available for high temperature applications up to 343°C.

Temperature Range: up to 200°C

Material: BS EN 12449:1999

Plating: Tin BS 1872 Part 2



Code	Cable Size mm ²	Stud Size	(A)	(B)	(W)	(E)	(F)	(D)	(L2)	Palm Thickness
1.5-3	1.5	3	1.9	3.6	5.5	5.0	3.0	7.5	17.0	1.4
1.5-4	1.5	4	1.9	3.6	6.7	6.0	4.0	7.5	19.5	1.1
1.5-5	1.5	5	1.9	3.6	7.7	6.5	4.5	7.5	20.4	0.9
2.5-3	2.5	3	2.4	3.9	5.5	54.0	3.0	7.8	18.0	1.6
2.5-4	2.5	4	2.4	3.9	6.7	6.0	4.0	7.8	20.0	1.4
2.5-5	2.5	5	2.4	3.9	7.7	6.9	4.5	7.8	21.2	1.1
2.5-6	2.5	6	2.4	3.9	9.0	7.5	5.5	7.8	23.0	1.0
4-4	4	4	2.8	4.7	7.0	6.0	4.0	8.0	20.5	1.7
4-5	4	5	2.8	4.7	8.0	6.4	4.6	8.0	21.5	1.4
4-6	4	6	2.8	4.7	9.0	7.5	5.5	8.0	23.5	1.3
6-4	6	4	4.1	5.3	7.0	6.0	4.0	10.0	22.5	2.0
6-5	6	5	4.1	5.3	8.0	6.4	4.6	10.0	23.5	1.9
6-6	6	6	4.1	5.3	9.0	7.5	5.5	10.0	25.5	1.7
6-8	6	8	4.1	5.3	11.5	10.0	7.0	10.0	29.5	1.6
6-10	6	10	4.1	5.3	14.5	11.8	7.2	10.0	31.0	0.9
10-5	10	5	4.7	6.6	11.0	5.6	5.2	4.7	26.0	1.7
10-6	10	6	4.7	6.6	11.0	5.6	5.2	4.7	26.0	1.7
10-8	10	8	4.7	6.6	13.0	8.0	7.0	4.7	29.5	1.2
10-10	10	10	4.7	6.9	16.0	10.9	9.6	4.7	39.0	1.5
10-12	10	12	4.7	6.9	18.0	10.5	10.0	4.7	39.0	1.2



Tooling

See Page 274-280