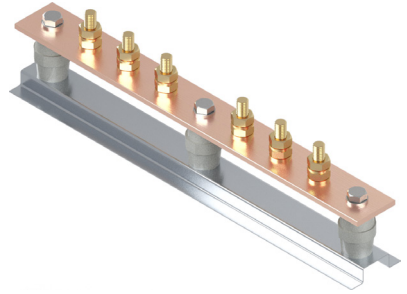


## EARTH BARS

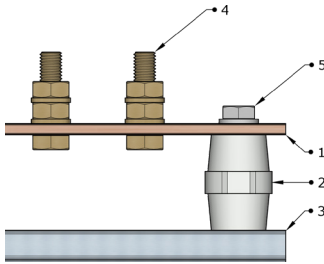
# Earth Bars

## Standard Earth Bars



### Earth Bars Without Link

Remora Standard Earth Bars are an effective and convenient way of providing a common earthing point. Manufactured using high conductivity 50x6mm hard drawn copper bar in compliance with IEC 62305. Supplied complete with brass stud assemblies and set on a steel channel base.



### Standard Earth Bars

- |   |                         |                            |
|---|-------------------------|----------------------------|
| 1 | 50 x 6mm Copper Bar     | HDHC Copper Bar            |
| 2 | M10 x 36mm Insulator    | Glass Reinforced Polyester |
| 3 | 64 x 15mm Base          | Galvanised Steel           |
| 4 | M10 Hex Bolt/Nut/Washer | Brass                      |
| 5 | M10 Hex Bolt/Nut/Washer | BZP Mild Steel             |

**Bar Material:** C101 99.9% Copper BS EN 13601:2013 / BS EN 12167:2011

**Fasteners:** M10x 40mm Brass CZ121 / BS 3643-1:2007

**Base:** Galvanised Steel Channel

**Compliance:** IEC 62305 / BS EN 62561-1:2012 / BS EN 7430

**Bar Current Rating:** 815 AMP



Code	Studs	Stud Size	Stud Spacing (A)	Bar Length (L2)	Base Width
EB04	4	M10 x 35	50.0	300.0	65.0
EB06	6	M10 x 35	50.0	400.0	65.0
EB08	8	M10 x 35	50.0	550.0	65.0
EB10	10	M10 x 35	50.0	650.0	65.0
EB12	12	M10 x 35	50.0	750.0	65.0
EB16	16	M10 x 35	50.0	950.0	65.0
EB20	20	M10 x 35	50.0	1,250.0	65.0

Code	Studs	Stud Size	Stud Spacing (A)	Bar Length (L2)	Base Width
EBDC - Test Link	1	M10 x 40	50.0	125.0	65.0

