

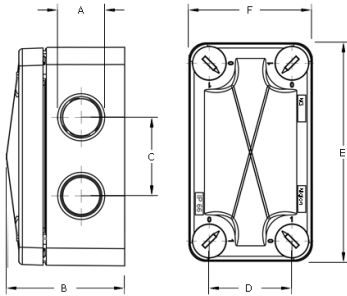
IP66 WATERPROOF JUNCTION BOX

IP66 Enclosures

Membrane Junction Box



M20 Entry Fitted with flexible waterproof membrane... Just push your cable through! Each entry is also threaded to accept an M20 cable gland. Premium quality UV Proof, Shatter Proof, and Fire Resistant construction means it's suitable for indoor and outdoor installation under driving rain and harsh sunlight. Quick-release locking screws make for quick and easy installation and inspection. 100% Corrosion Proof. Supplied with mounting plate.



IP66 Waterproof Junction Box - Slimline

- Offers IP66 Protection
- Integrated gasket seal
- Easy installation using supplied mounting bracket
- 6x M20 membrane threaded cable entries

Protection: IP66

Temperature Range: -30°C to +100°C

Glow Wire Test: 750°C

Voltage: 400V

Enclosure Material: PP+GF

Gasket Material: TPE

Standards: CE / Rohs / UV V0

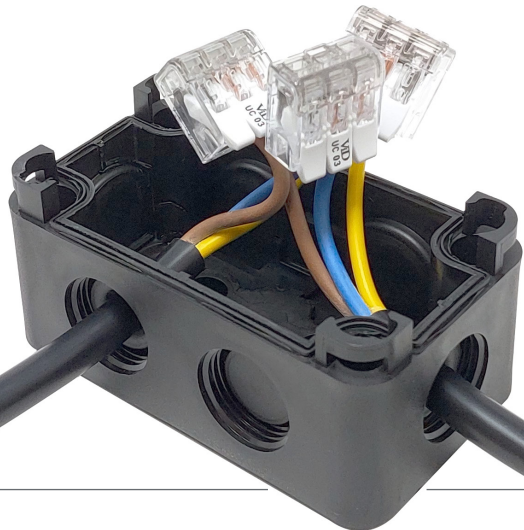


Code	(A)	(B)	(C)	(D)	(E)	(F)	Pack QTY
JB86-50B-Slim	6x M20	50	31	34	86	50	5

Connectors (see p.62)



Lever Terminals (see p.62)



All dimensions in mm except where stated