

SEALING WASHERS

Sealing Washers



Sealing washers form a mechanical seal between the cable gland and equipment panel. This can fill irregularities between “less-than-perfect” mating surfaces forming a liquid tight seal and evenly distributing pressure over the mating surface. The requirement for a sealing washer will depend on the ingress protection rating or code of protection for the equipment the gland is being fitted to.

Nylon Sealing Washers

• ISO Metric range. Standard Nylon sealing washer.

Standards: FDA and BFR Compliant UL94 HB

Temperature Range: -40°C to 85°C

Material: PA6 Nylon (ISO 1043)



Code	Gland Entry	ID (A)	OD (B)	Pack QTY
NW16	M16	16.5	25.0	100
NW20	M20	20.5	30.0	100
NW25	M25	25.5	36.0	100
NW32	M32	32.5	42.5	100
NW40	M40	40.5	52.0	50
NW50	M50	50.5	64.5	50
NW63	M63	63.5	80.0	25
NW75	M75	75.5	95.0	10

Nylon Sealing Washers - Lightweight

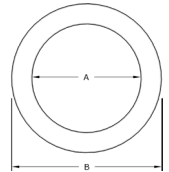
• ISO Metric range. Lightweight Nylon sealing washer.

Temperature Range: -40°C to 85°C

Material: PA6 Nylon (ISO 1043)



Code	Gland Entry	ID (A)	OD (B)	Pack QTY
NSW16	M16	16.5	22.0	100
NSW20	M20	20.5	25.5	100
NSW25	M25	25.5	32.0	100
NSW32	M32	32.5	41.5	100



HDPE Sealing Washers

• ISO Metric range. Increased temperature range.

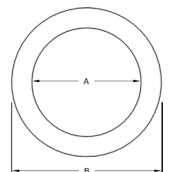
Standards: UL94 HB / DIN 8075

Temperature Range: -40°C to 100°C (static)

Material: High Density Polyethylene (HDPE DIN 8075)



Code	Gland Entry	ID (A)	OD (B)	Pack QTY
805516	M16	16.2	23.0	100
805520	M20	20.2	27.0	100
805525	M25	25.2	35.0	100
805532	M32	32.2	43.0	100
805540	M40	40.3	53.0	50
805550	M50	50.3	67.0	50
805563	M63	63.3	85.0	25
805575	M75	75.3	95.0	10



Ident & Wiring Term
 Copper Lugs
 Heatshrink Repair
 Cable Joining
 Junction Boxes
 Flexible Conduit
 Cable Glands
 Gland Accs.
 Cable Cleats
 Earthing Lightning
 MCC Cable
 Cable Ties & Acc
 Tooling & Cable Prep
 Fixing & Security