

Earth Rod to Cable Clamp

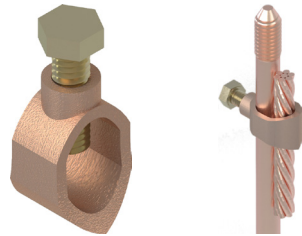
Earth Rod to Cable Clamps are used for joining earth rods to different sizes of stranded copper conductor. The clamps have high resistance to corrosion and are mechanically strong to ensure a long lasting connection.

Material: Gunmetal

Standards: BS 7430



Code	Rod Diameter	Conductor Range (mm ²)	Pack QTY
ERCC0635	9.5 / 3/8"	6 - 35	10
ERCC1670	16 / 5/8"	16 - 70	10
ERCC3595	19 / 3/4"	35 - 95	10



Earth Rod to Cable Lug Clamp

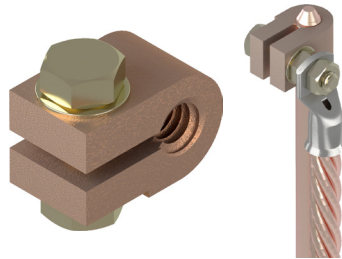
Earth Rod to Cable Lug Clamps are used for joining earth rods to Copper Tube Lugs. The clamps have high resistance to corrosion and are mechanically strong to ensure a long lasting connection.

Material: Gunmetal

Standards: BS 7430



Code	Rod Diameter	Lug Stud Size	Pack QTY
ERLC9.5	9.5 / 3/8"	8	10
ERLC16	16 / 5/8"	10	10
ERLC19	19 / 3/4"	10	10



Earth Rod to Tape 'A' Clamp

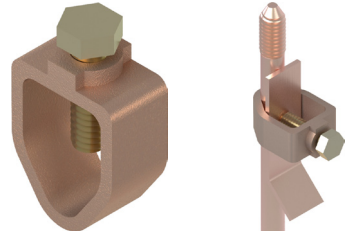
Earth Rod to Tape Clamps are used for joining earth rods to different sizes of copper tape. The clamps have high resistance to corrosion and are mechanically strong to ensure a long lasting connection.

Material: Gunmetal

Standards: BS 7430



Code	Rod Diameter	Max Conductor	Pack QTY
ERTC16/25	16 / 5/8"	26 x 12	25
ERTC19/25	19 / 3/4"	26 x 10	25



'U' Bolt Rod Clamp

'U' Bolt Rod clamps are designed to join various sizes of conductor tape to the earth electrode. The clamps have a high resistance to corrosion and are mechanically strong to ensure a lasting connection.

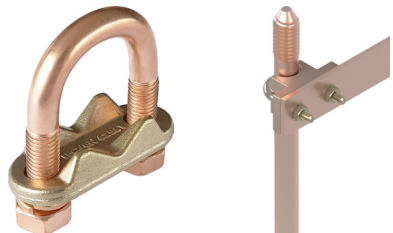
Body Material: High strength copper alloy

'U' Bolt Material: Copper

Standards: BS 7430



Code	Rod Diameter	Hole Centres	Pack QTY
ERUB16	16 / 5/8"	37.0	10
ERUB19	19 / 3/4"	37.0	10



Call the Remora sales team at **01226 352 000**

Challenge us - We find a solution