

Brass Earth Tags

Temperature Range: -60°C to 200°C

Material: Brass BS 2874 CZ108 HH

Finish: Plain Brass or Nickel Plated



Metric

| Brass | Nickel Plated Brass | | | | | | |
|-------|---------------------|-------------|--------|--------|-------------|-----------|----------|
| Code | Code | Gland Entry | ID (A) | OD (B) | Length (L2) | Bolt Hole | Pack QTY |
| ET16 | NPET16 | M16 | 16.3 | 25.4 | 49.3 | M6 | 100 |
| ET1 | NPET1 | M20 | 20.3 | 27.0 | 53.4 | M6 | 100 |
| ET2 | NPET2 | M25 | 25.3 | 35.0 | 59.4 | M6 | 100 |
| ET3 | NPET3 | M32 | 32.3 | 45.2 | 77.0 | M12 | 100 |
| ET4 | NPET4 | M40 | 40.3 | 53.7 | 88.7 | M13 | 50 |
| ET5 | NPET5 | M50 | 50.5 | 65.2 | 111.0 | M13 | 50 |
| ET6 | NPET6 | M63 | 63.3 | 82.6 | 128.6 | M13 | 25 |
| ET7 | NPET7 | M75 | 76.5 | 95.4 | 141.0 | M13 | 10 |

NPT

| Brass | Nickel Plated Brass | | | | | | |
|----------|---------------------|-------------|--------|--------|-------------|-----------|----------|
| Code | Code | Gland Entry | ID (A) | OD (B) | Length (L2) | Bolt Hole | Pack QTY |
| ET050NPT | NPET050NPT | ½" NPT | 21.3 | 27.7 | 53.4 | M6 | 100 |
| ET075NPT | NPET075NPT | ¾" NPT | 26.8 | 35.0 | 59.4 | M6 | 100 |
| ET100NPT | NPET100NPT | 1" NPT | 33.3 | 45.2 | 77.0 | M12 | 100 |
| ET125NPT | NPET125NPT | 1¼" NPT | 42.8 | 53.7 | 88.7 | M12 | 100 |
| ET150NPT | NPET150NPT | 1½" NPT | 48.9 | 65.2 | 111.0 | M13 | 100 |
| ET200NPT | NPET200NPT | 2" NPT | 62.0 | 82.6 | 128.6 | M13 | 50 |
| ET250NPT | NPET250NPT | 2½" NPT | 74.0 | 95.4 | 141.0 | M13 | 50 |
| ET300NPT | NPET300NPT | 3" NPT | 90.0 | 108.0 | 156.0 | M13 | 25 |
| ET350NPT | NPET350NPT | 3½" NPT | 102.2 | 127.0 | 190.0 | M13 | 10 |

Stainless Steel Earth Tags

Temperature Range: -100°C to 400°C

Material: 316 (A4) Stainless Steel

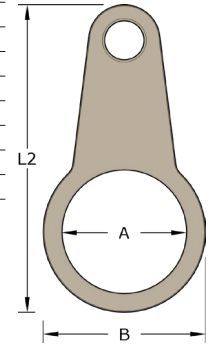


Metric

| Code | Gland Entry | ID (A) | OD (B) | Length (L2) | Bolt Hole | Pack QTY |
|--------|-------------|--------|--------|-------------|-----------|----------|
| SSET16 | M16 | 16.3 | 25.4 | 49.3 | M6 | 100 |
| SSET1 | M20 | 20.3 | 27.0 | 53.4 | M6 | 100 |
| SSET2 | M25 | 25.3 | 35.0 | 59.4 | M6 | 100 |
| SSET3 | M32 | 32.3 | 45.2 | 77.0 | M12 | 100 |
| SSET4 | M40 | 40.3 | 53.7 | 88.7 | M13 | 50 |
| SSET5 | M50 | 50.5 | 65.2 | 111.0 | M13 | 50 |
| SSET6 | M63 | 63.3 | 82.6 | 128.6 | M13 | 25 |
| SSET7 | M75 | 76.5 | 95.4 | 141.0 | M13 | 10 |

NPT

| Code | Gland Entry | ID (A) | OD (B) | Length (L2) | Bolt Hole | Pack QTY |
|------------|-------------|--------|--------|-------------|-----------|----------|
| SSET050NPT | ½" NPT | 21.3 | 27.7 | 53.4 | M6 | 100 |
| SSET075NPT | ¾" NPT | 26.8 | 35.0 | 59.4 | M6 | 100 |
| SSET100NPT | 1" NPT | 33.3 | 45.2 | 77.0 | M12 | 100 |
| SSET125NPT | 1¼" NPT | 41.8 | 53.7 | 88.7 | M12 | 100 |
| SSET150NPT | 1½" NPT | 48.9 | 65.2 | 111.0 | M13 | 100 |
| SSET200NPT | 2" NPT | 62.0 | 82.6 | 128.6 | M13 | 50 |
| SSET250NPT | 2½" NPT | 74.0 | 95.4 | 141.0 | M13 | 50 |
| SSET300NPT | 3" NPT | 90.0 | 108.0 | 156.0 | M13 | 25 |
| SSET350NPT | 3½" NPT | 102.2 | 127.0 | 190.0 | M13 | 10 |



Call the Remora sales team at **01226 352 000**

Challenge us - We find a solution

Ident & Winding Term
Copper Lugs
Heatshrink Repair
Cable Joining
Junction Boxes
Flexible Conduit
Cable Glands
Gland Accs.
Cable Cleats
Earthing Lightning
MCC Cable
Cable Ties & Acc
Tooling & Cable Prep
Fixing & Security