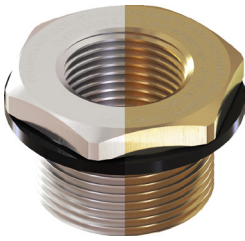


# Accessories | HAZARDOUS AREA REDUCERS

## HAZARDOUS REDUCERS METRIC & IMPERIAL



### Metric-Metric Hazardous Reducers

Reduces housing entry thread.

• ISO Metric range.

• Application; Hazardous Area, Machines, Devices, Housings, Panels

**Equipment Protection Levels:**

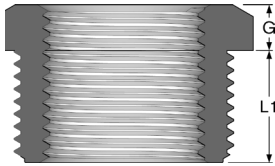
IECEX/INMETRO: Ex db I Mb / Ex eb I Mb / Ex db IIC Gb / Ex eb IIC Gb / Ex ta IIC Da / Ex nR IIC

ATEX: Ⓜ I M2 Ex db I Mb / Ex eb I Mb, Ⓜ II 2G 1D Ex db IIC Gb / Ex eb IIC Gb / Ex ta IIC Da

**Protection:** IP66 / IP68 (2m cont.)

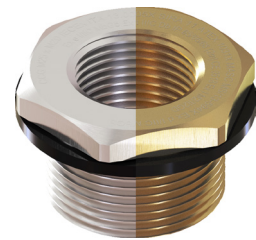
**Temperature Range:** -60°C to 95°C (-60°C to 160°C with High Temp Gasket)

**Material:** Brass or Nickel Plated Brass (Marine Grade)

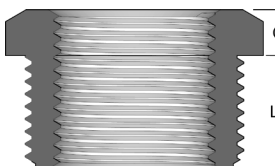


Code	Entry Thread		Thread Length		Hex Length		
	Male	Female	Male (L1)	Female (F)	A/F	A/C	
RM20M16E-UN	M20 x 1.5	M16 x 1.5	15.0	15.0	27.0	30.4	6.0
RM25M16E-UN	M25 x 1.5	M16 x 1.5	15.0	15.0	32.0	36.0	6.0
RM25M20E-UN	M25 x 1.5	M20 x 1.5	15.0	15.0	32.0	36.0	6.0
RM32M16E-UN	M32 x 1.5	M16 x 1.5	15.0	15.0	38.0	42.8	6.0
RM32M20E-UN	M32 x 1.5	M20 x 1.5	15.0	15.0	38.0	42.8	6.0
RM32M25E-UN	M32 x 1.5	M25 x 1.5	15.0	15.0	38.0	42.8	6.0
RM40M20E-UN	M40 x 1.5	M20 x 1.5	15.0	15.0	47.0	52.9	6.0
RM40M25E-UN	M40 x 1.5	M25 x 1.5	15.0	15.0	47.0	52.9	6.0
RM40M32E-UN	M40 x 1.5	M32 x 1.5	15.0	15.0	47.0	52.9	6.0
RM50M20E-UN	M50 x 1.5	M20 x 1.5	15.0	15.0	55.0	61.9	6.0
RM50M25E-UN	M50 x 1.5	M25 x 1.5	15.0	15.0	55.0	61.9	6.0
RM50M32E-UN	M50 x 1.5	M32 x 1.5	15.0	15.0	55.0	61.9	6.0
RM50M40E-UN	M50 x 1.5	M40 x 1.5	15.0	15.0	55.0	61.9	6.0
RM63M20E-UN	M63 x 1.5	M20 x 1.5	15.0	15.0	70.0	78.8	6.0
RM63M25E-UN	M63 x 1.5	M25 x 1.5	15.0	15.0	70.0	78.8	6.0
RM63M32E-UN	M63 x 1.5	M32 x 1.5	15.0	15.0	70.0	78.8	6.0
RM63M40E-UN	M63 x 1.5	M40 x 1.5	15.0	15.0	70.0	78.8	6.0
RM63M50E-UN	M63 x 1.5	M50 x 1.5	15.0	15.0	70.0	78.8	6.0
RM75M20E-UN	M75 x 1.5	M20 x 1.5	15.0	15.0	80.0	90.0	6.0
RM75M25E-UN	M75 x 1.5	M25 x 1.5	15.0	15.0	80.0	90.0	6.0
RM75M32E-UN	M75 x 1.5	M32 x 1.5	15.0	15.0	80.0	90.0	6.0
RM75M40E-UN	M75 x 1.5	M40 x 1.5	15.0	15.0	80.0	90.0	6.0
RM75M50E-UN	M75 x 1.5	M50 x 1.5	15.0	15.0	80.0	90.0	6.0
RM75M63E-UN	M75 x 1.5	M63 x 1.5	15.0	15.0	80.0	90.0	6.0

• For Nickel Plated remove -UN when ordering



### Imperial (ET)-Metric Hazardous Reducers



Code	Entry Thread		Thread Length		Hex Length		
	Male	Female	Male (L1)	Female (F)	A/F	A/C	
RET050M16E-UN	½" / 0.50 ET	M16 x 1.5	15.0	15.0	19.0	22.0	21.0
RET050M20E-UN	½" / 0.50 ET	M20 x 1.5	15.0	15.0	24.0	27.5	21.0
RET075M20E-UN	¾" / 0.75 ET	M20 x 1.5	15.0	15.0	24.0	27.5	21.0
RET075M25E-UN	¾" / 0.75 ET	M25 x 1.5	15.0	15.0	30.5	35.0	21.0
RET100M20E-UN	1" / 1.00 ET	M20 x 1.5	15.0	15.0	30.5	35.0	5.0
RET100M25E-UN	1" / 1.00 ET	M25 x 1.5	15.0	15.0	30.5	35.0	5.0
RET125M20E-UN	1¼" / 1.25 ET	M20 x 1.5	15.0	15.0	38.0	42.0	5.0
RET125M25E-UN	1¼" / 1.25 ET	M25 x 1.5	15.0	15.0	38.0	42.0	5.0
RET150M20E-UN	1½" / 1.50 ET	M20 x 1.5	15.0	15.0	42.5	49.0	5.0
RET150M25E-UN	1½" / 1.50 ET	M25 x 1.5	15.0	15.0	42.5	49.0	5.0

• For Nickel Plated remove -UN when ordering